



In this issue of Telstar:

- PC Report *Page 8*
- Stowupland Village Hall *Page 46*
- Ramblings from the Potting Shed *Page 34*

**M & M Butchers
Mark Hammond**

Suppliers of high quality meats, poultry,
game and award winning sausages.

**Local Meats * Home Cooked Pies
Home Cooked Hams
Dry Cured Bacon & Gammon
Selection of Homemade Burgers
Big Selection of Specialist Cheese**

Local Delivery

Opening Hours

**Monday & Tuesday 6.30am to 1.00pm
Wednesday Thursday Friday 6.30am to 2.00pm
Saturday 6.30am to 12.30 pm**

The Green Stowupland Suffolk

IP14 4AR

Telephone :

01449 677720

NOTES FROM THE EDITOR

FEBRUARY 24



Welcome to our first edition of 2024. I appreciate that by the time you get this, we'll be in February but a happy New Year to you all anyway, and I hope you all had an enjoyable time over the festive period. Mine was busy, as I had my New Zealand uncle and his wife staying with us. It's the first time I'd spent

Christmas with my uncle since I was a teenager and that's a long time! It meant we spent a lot of time on days out around Suffolk and Norfolk, with my favourite outing being to see the baby seals at Horsey gap. They were just adorable. One little chap was determined to give the wardens the runaround, by straying off the beach to an old pillbox and then putting on a real show of cuteness overload to visitors.



This month's edition sees the first article from our new gardening correspondent Paula, and I'm incredibly grateful to her for stepping into the breach. It's a real pleasure to welcome Paula to our team of regular contributors and I am really looking forward to reading her articles.

An early heads up for an event later in the year. The yard sale is back, so start sorting your unwanted stuff. Last year's sadly had to be cancelled due to ill health of one of the organisers, but I'm pleased to report that they are returning to better health, and the yard sale will take place on Sunday 9th June. More details will be provided in later editions.

We also have a couple of articles from the Stowmarket Food Museum. One outlines the lottery heritage funding they have been successful in securing, which is fabulous news and their plans for how they intend to use the money. The other is about some collaborative work being undertaken with EA Sustain. There is plenty to see and do at the Food Museum, so always well worth a visit, and is so good to see it going from strength to strength.

Lastly, our local Citizens Advice (CA) are looking for volunteers. The CA came into existence in 1939, when the government of the day established a group to look at how to meet the needs of the civilian population during wartime, and they have been continuing to support and advise ever since. The work they do is so worthwhile, so if you have the time and think it could be for you then do get in touch, details are inside.

As ever we on the Telstar team are always interested in ideas for new articles / contributions for the magazine, so if there is something you are interested in or have a talent for, and you'd like to share it with our village community then get it touch. The deadline for submissions is 7th of the month.

DISTRICT COUNCIL REPORT

DECEMBER 2023

Joint Local Plan - At Mid Suffolk's Council meeting on 20th November, Part 1 of the Joint Local Plan (JLP) for Mid Suffolk and Babergh was approved and hence adopted.

The JLP sets out a planning framework to guide development in the districts over the period to 2037. At the Planning Inspectors request, the JLP was split into two parts.

JLP Part 1 provides a set of strategic and local development management policies against which planning applications and appeals will be assessed. There are 10 strategic policies (such as on affordable housing, climate change and tourism) and 32 local policies (such as on biodiversity, historic environment and sustainable construction).

JLP Part 2, which covers housing policies such as settlement boundaries and housing requirements, is being worked on and will be consulted on next year.

Proposed Supplementary Planning Documents (SPDs) - Also, being worked on are a series of supplementary planning documents that will support the JLP and help to inform future planning applications. There are ten SPDs being put forward and these include ones on Biodiversity & Trees, Sustainable Design and Natural & Historic Environment.

Home insulation - The *Cosy Homes* initiative has been launched with a £2 million fund. Eligible households can apply for free energy efficiency measures in their own homes, including if privately rented. A contractor has been secured to deliver this programme and they have been able to access further grant funding to contribute to this scheme. Full details to be available via www.midsuffolk.gov.uk

This initiative is in addition to a programme of retrofit for the Council's own housing stock.

Particularly vulnerable households can continue to access this via the wider Suffolk scheme, www.warmhomessuffolk.org

Energy efficiency improvements for listed buildings - It is currently very difficult to retrofit listed buildings so the Council is looking to help with this. Mid Suffolk is consulting on proposals to put in place a Local Listed Building Consent Order to enable owners of listed buildings to improve the energy efficiency of them. If ultimately agreed, this will safeguard our valuable heritage assets but streamline the process for approving balanced and sensitive energy efficiency improvements.

Call for sites to support nature recovery - MSDC has low tree cover and is actively planting more trees and changing the way that public open spaces are managed.

The Council is now working with The Woodland Trust and has put out “a call for land sites” which could be planted or improved for nature. Of particular interest is land of low agricultural value, which is near or close to existing natural habitats, or can help provide green corridors to link them up. If you have land available, no matter what size, or want more information on funding etc, email biodiversity@babberghmidsuffolk.gov.uk

Locality Award - A reminder that this year's locality awards are still open for applications. Any group or organisation can apply for amounts of £250 or more. Please contact one of us for an application form.

Cllr Rachel Eburne
Rachel.Eburne@midsuffolk.gov.uk
01449 673311

Cllr Janet Pearson
Janet.Pearson@midsuffolk.gov.uk
07928 512592



Do you need help with:

- Personal Care
- Dementia Care
- Overnight Care
- Help around the house
- Companionship

Contact us for more information or a brochure:

 01449 678000

 www.mycare-at-home.co.uk


My Care
AT HOME

Providing care and support in your own home


RECRUITING
CARE
PRACTITIONERS
NOW!

<h2>J.D CARPENTRY</h2>	
<p>Please contact me for a free, no obligation, quotation</p> <p><i>Jordan Dealhoy</i> 07966 206781 jordan.d.carpentry@gmail.com Stowupland</p>	

DISTRICT COUNCIL REPORT

JANUARY 2024

Empty homes and Council Tax

To incentivise bringing more homes back into use, MSDC is proposing to increase the amount of Council Tax payable on long-term empty homes. Currently these attract a levy of 50% on the Council Tax payable. The new policy will be levies of 100% for empty homes being left for one (to five) years, 200% for five (to ten) years and 300% for ten years or more. Exceptions will apply – such as property under probate or properties undergoing major repairs. If approved, this will be from April 2024.

Additionally, it is proposed that second homes attract a 100% levy. If approved, this will be from April 2025 as a year's notice has to be given.

There had been the opportunity to increase some of these from 2019 but the previous Administration did not take this up.

Greenhouse gas emissions

MSDC has published its Greenhouse Gas Emissions report for 2022/23 which shows a reduction in emissions against 2018/19 when the Council declared a climate emergency and committed to be carbon neutral by 2030.

The leisure centres are the biggest cause of emissions. As the first reductions made are the "low-hanging fruit," there will be a lot more work to continue this downward trend.

Fees & charges for 2024/25

For the annual review process of setting fees or charges MSDC has to consider factors such as inflation and the hours involved. The Council cannot charge for some statutory services and national Government sets others. Discretionary charges, such as vehicle licensing, litter bin emptying and pavement licensing, can be set locally and for these MSDC aims to cover costs.

Stowmarket sports facilities improvements

MSDC Cabinet is proposing approval of the full business case of the Stowmarket Sports Health and Leisure Project to allow the first stage, covering new and updated sports facilities, to go ahead. This includes a 3G pitch, special athletics track, multi-games area (MUGA), improving existing pitches and other facilities. If Council approves this, it is hoped work can start in 2024.

Home insulation

The *Cosy Homes* initiative launched with a £2 million fund and we are encouraging householders to apply. Eligible households can apply for free energy efficiency measures in their own homes, including if privately rented.

Full details to be available via www.midsuffolk.gov.uk

This initiative is in addition to a programme of retrofit for the Council's own housing stock. Also, particularly vulnerable households can continue to access help via the wider Suffolk scheme, www.warmhomessuffolk.org

Flooding

Flood payments (of £500 for residents and £2,500 for businesses) are being processed by Mid Suffolk on the basis of information from the SCC highways reporting tool and information submitted to MSDC.

Affected households may also be eligible for a discount on council tax.

Local issues

The footpath link between the Trinity Walk bus shelter (by Gipping Road) and Trinity Meadows is finally expected to be done in January.

Locality Award

A reminder that this year's locality awards are still open for applications. Any group or organisation can apply for amounts of £250 or more. Please contact one of us for an application form.

Cllr Rachel Eburne
Rachel.Eburne@midsuffolk.gov.uk
01449 673311

Cllr Janet Pearson
Janet.Pearson@midsuffolk.gov.uk
07928 512592



DESIGN • PRINT • LARGE FORMAT
MAILING • PROMOTIONAL GIFTS • SCANNING

**Gipping Press
are proud to print
this publication**

01449 721599
enquiries@gippingpress.co.uk
www.gippingpress.co.uk

PARISH COUNCIL REPORT

DEC 23 / JAN 24



The December meeting opened with 4 members of the public, 5 Parish Councillors and Cllrs Welham and Eburne. Cllr Studd stood in for Cllr Bridges as Chairman for this meeting. In January there were 2 members of the public, 5 Parish Councillors and Cllrs Welham, Eburne and Pearson.

Councillors' Reports: The full reports from both MSDC and SCC Councillors' can be found elsewhere in Telstar.

December: Cllr Welham advised that he had attended a full Suffolk CC meeting today where there had been 3 motions submitted. One was to confirm support and Christmas greetings to the armed forces, another was for more regular drainage cleaning to ensure the Highways were kept clear to reduce instances of flooding which the Conservatives watered down as they did not think that clearing of drains more regularly was required but just for the District Councils to keep the roads swept more regularly. The third one was to note the near completion of the new Lowestoft Gull Wing bridge and the Greens called for this to be enhanced with better bus services, cycling and pedestrian routes. He also advised that he had met with the SCC engineer to look at the parking problem outside the Crown and the engineer felt that he could design a solution without having to incur additional design costs. He was advised by the PC that a blocked drain on the A1120 close to the village hall was reported over a month ago and nothing has been done yet to alleviate the flooding on the road down towards the primary school.

Cllr Eburne reported that MSDC are now processing the flood claims from the recent storms. MSDC are also looking to encourage nature by providing hedging etc for small areas of private land and are looking for landowners to come forward to take advantage of the offer. She also advised that the first part of the Joint Local Plan had been passed. Cllr Eburne also reported that there were some 'Cosy Home' insulation grants available to a far wider group of people than is normally permitted. Cllr Voden gave his thanks on behalf of the Stowupland Local History Club for the recent grant that they had received. There was also a query about whether it was part of the planning application that so much of the hedging alongside the new development down Prestons Hill had been removed. Councillor Welham said that he had attended a site meeting with residents and District Councillor Lay who is in touch with the Chief Planning Officer; the removal of vegetation exceeded the amount permitted and MSDC will initiate enforcement action.

January: Cllr Welham advised that all SCC grants to art and culture including libraries were to be ceased as from 2025 which would have a devastating effect on theatres etc. throughout the county.

The library service is currently out to tender. Cllr Voden was very concerned about the future of the library service. Cllr Welham also reported that the Bury St Edmunds archive would close in 2025. He also mentioned that he had been copied into a resident's letter to the PC regarding bins and rubbish being left out on Trinity Meadows but this was a matter for the Housing Association who owned the properties. MSDC Cllr Eburne advised that the Council had voted to raise the Council Tax on long term empty properties. Also, the emptying of litter and dog bin charges are to be increased. The footpath link between Trinity Meadows and Trinity Walk is due to start as soon as the weather allows.

Matters of Report: December: Works completed include barriers at Maple Road, cutting back of brambles in the Churchyard, work to ditch in cemetery, removal of tree in Birch Close and cutting back of brambles and trees on The Green near Mill Cottages. The occupation licences for the PlayPark and Community Events cupboard have been signed. The dog bin for Gipping Road has been ordered and one has been received for Oxlip Way and is awaiting installation. The holes in Broomspath Road have been reported. Meetings have been arranged with Bloor Homes regarding Thradstones Meadow on 11th December and with grass contractor in January. Everything else is ongoing.

January: The dog bins for both Oxlip Way and Gipping Road have been installed. Work has started on trying to eradicate the rats at the allotments. The Hip Hop equipment has been repaired at the play park. The potholes in Broomspath Road have been reported but only the one outside no.4 meets SCC criteria and photos have been sent to Cllr Welham and Josh White relating to the verge in Devon Road. A letter has also been sent to AWA regarding the pumping station capacity and a reply received advising that capacity is okay but when there is a large amount of surface water, it will overflow into the foul system and there are currently no plans to upgrade. A meeting has been arranged to discuss grass cutting in the cemetery this month. The 2 posts on the Green should be reinstalled shortly. Everything else is ongoing.

Public Forum: December: One resident enquired as to whether the PC had received the Telstar grant bid and she was assured that they had, and it was on tonight's agenda for discussion. Another resident wanted to make the PC aware that the mess on The Green outside her property was down to delivery vans etc. using her gateway to attempt to turn round. A Saxham Street resident enquired as to whether the PC were aware of any issues relating to the pumping station not having the capacity to remove flood water from the Highway as her neighbour had been told by an AWA employee. The PC will write to AWA to ascertain the position as if this is the case then it affects much of the village. Cllr Welham asked her to ensure that all those affected by the floods had recorded details on the SCC portal which then entitles them to compensation.

January: A resident asked if the information on traffic speeds collected from the SID devices would be made available to the residents. She was advised that there was no data card supplied with the devices. Another resident felt that it might be useful for the biodiversity group to be involved in the Woodland Trust/District Council initiative to increase biodiversity and tree cover. He also felt that a 5-bar gate should be provided at the entrance to Thradstones Meadow rather than timber bollards.

Donation: December: 2 applications for donations have been received and it was agreed to donate £400 to Citizens Advice but nothing to Headway.

Thradstones Meadow: January: Councillors disagreed with the revised plan to install 2 removable bollards in place of a 5-bar gate.

Sub-Committee Reports:

Allotments – December: Parish Cllrs discussed and approved a quotation from a pest control company to sort out the current rat issue at the allotments, however, they did not have the funding to set up a monthly ongoing control programme.

Cemetery and Churchyard – December: Parish Cllrs discussed the application received to erect a memorial stone on an existing grave. It was agreed that the current cemetery policy must be observed.

January: It was agreed that the person requesting a burial of ashes in the cemetery would be advised of the current cemetery policy.

Finance and Policy – December: Members accepted the continuation of the direct debit payment to Anglian Water and the standing order to Stowmarket Church. A budget request of £700 for the coming year for the Biodiversity Group was approved. The grant application of £2995 for the coming year for Telstar was also approved. The Parish Council budget for 2024/25 was agreed at a 1% increase at Band D level with a total precept of £55,925 subject to no change in the tax base figure.

January: It was agreed that the precept form for the coming year would be signed subject to any tax figure amendments. The third quarter finance reports were accepted.

PIIP – December: A request has been received from Freeman School for funding of £41,598.13 for playground and front car park refurbishment. It was recommended that no grant was made until the flooding issue is resolved to the satisfaction of Highways and then only granting £10,000 towards the refurbishment of the playground. There was also a request from the Pre-school and Mighty Oaks for £1823.11 for light and electric control of rear field gate.

Planning – December: Planning applications received include revised information for the ongoing application for the erection of factory in Rendall Lane and an application for temporary buildings at the High School. They agreed that their previous comments about the factory still stood and did not wish to repeat them; and that they had no comments relating to the school application.

January: The planning and listed building applications for conversion of barn to a holiday let at Columbine Hall have been granted. It was agreed to re-submit their earlier comments regarding the appeal of the Landex planning application in Church Road.

Play Park – December: It was agreed that the PC accept the quote for the repair and maintenance of the damaged hip hop equipment and to use the MSDC Pride in my Place grant money to pay for it. They also approved the design and replacement of the toddler and baby swing units but will access external funding for this.

Transport, Travel and Safety – December: It was agreed to purchase an additional solar speed indicator device for Gipping Road and a second one once a suitable location has been identified. Parish CIL funding will be sought for funding them.

Trim Trail – January: Cllrs agreed a budget for the licence to install the trim trail equipment on the Linden Homes Development and a budget for the solicitors to review the licence agreement.

Councillors' Reports: December: Cllr Melhuish enquired if the bag holders are going to be removed from the posts holding the dog litter bins. Cllr Murton advised that a post had been knocked over on The Green close to her house. Cllr Voden had been asked by a resident if the footpath leading up to the chip shop was going to be extended to Thorney Green Road. The Green Committee will consider this at their next meeting. Cllr Easter reported the state of the verge in Devon Road outside the Chinese Takeaway is very churned up and also a blocked drain in Oak Road which is causing flooding.

Cllr Studd reported that the cycle access onto the Linden Homes estate was being used by vehicles.

January: Cllr Voden advised that he was unable to get a response from Bloor Homes regarding the flooding of the footpath opposite Comfrey Road and he was advised to contact the Service Management Company as it was now their responsibility to handle queries relating to Trinity Meadows. Cllr Bridges reported that a resident had voiced concerns about children playing in deep ditches around the Linden Homes site: she had also been advised about an overhanging branch from a tree on the corner of Birch Close.

Clerk's Report: December: The Clerk advised that it was going to cost up to £1,250 for the licence to install the trim trail equipment on the Linden Homes development, this is going to be discussed further with Linden Homes. A budget was agreed of up to £2,500 to allow SCC to initiate the start of the upgrading the footpath from The Green to the front of the High School and to consider using the Parish CIL to fund it. The Clerk advised that she has had to ask the skip company to remove the skip from the cemetery and not to replace it as they are now not permitting it to be used for soil and to charge by the week for it to be there.

Correspondence: December: Notification from SCC on updates to the street lighting contract, a proxy request suggestion by MSDC on behalf of the Ladybirds for locality funding as well as a notification from them regarding the notice of adoption of the Joint Local Plan part 1. A further letter from MSDC outlining their assistance to those impacted by the recent flooding. A request from a resident for information regarding the ongoing flooding issues in Saxham Street. Stowupland Falcons are requesting use of The Green on Wednesday evenings for the training of the Under 8's team and also to reset the existing goalposts to allow a safe training area. An allotment holder has voiced their concerns about the number of rats and the damage and risks that they pose. Another resident was concerned that football was allowed to be played on the Green on Remembrance Sunday. A resident from Trinity Meadows voiced concerns about the unauthorised traffic incursion over footways onto the estate from Gipping Road. MSDC acknowledged the Parish Council's suggestions for road names on new development opposite the primary school.

January: This month's correspondence included a request from a resident for some traffic calming measures for Trinity Meadows. Another resident from Trinity Meadows voiced concerns about some residents failing to get their bins in after the bin collection, and the way refuse is allowed to accumulate outside of the bins. An email from the Woodland Trust alerting the PC to a media release from MSDC encouraging biodiversity and tree planting. The media release was also received from MSDC. A resident reported a severe fall on the uneven footpath by the Retreat Pond. An email was received from a resident supporting the No Mow May initiative. A request for some ring-fenced funding to assist with the planning application for the Village Hall was also received.

The December meeting closed to the public at 8.48pm and the January meeting at 8.25pm.

<p>"I'm in PAIN!" Can Chiropractic help me?</p>	 <p>Stowmarket Chiropractic <i>caring for you is our business.</i></p>
<p>Your initial visit will include:</p> <ul style="list-style-type: none"> • A consultation with the Chiropractor • A thorough spinal examination with Orthopaedic & Neurological tests • A confidential report of findings • An explanation of our treatment programme if we determine Chiropractic can help you • Referral to the appropriate specialist if we determine Chiropractic cannot help you <p>Call TODAY for an appointment 01449 612620 www.abbey-chiropractic.com</p>	 <p>Marie Broodryk M.Tech.Chiro., CCFC, MRCC</p>  <p>Michael Bailey M.Chiro</p>
<p>Registered with The GCC, RCC, SCA & BCA</p>	<p>7 Stowupland Road, Stowmarket, IP14 5AG</p>

CHIMNEY SWEEP

ECO SWEEP CHIMNEY SERVICES

- NEW POWER SWEEPING METHOD USED FOR A MORE THOROUGH CHIMNEY CLEAN THAN BRUSHES.
- INDUSTRIAL HEPA FILTERED VACUUM.
- FULLY INSURED.
- INSURANCE RECOGNIZED CERTIFICATES ISSUED.
- SPOTLESS, RELIABLE AND FRIENDLY SERVICE.
- ALL CHIMNEYS, WOOD BURNERS, AGA, BOILER FLUES SWEEP.
- GUILD OF MASTER SWEEPS CERTIFICATED MEMBER.



TEL. 01359 232335



C.M. Hayward

Electrical Services

Lothlorien, Church Road,
Stowupland, Stowmarket,
Suffolk. IP14 4BH

01449 678213

GRAHAM MOORE ELECTRICAL LTD

Blacksmiths Cottage, Silver Street, Old Newton, IP14 4HF

For all your electrical needs

For a friendly and efficient service



Call Graham on Tel: 01449 616946 Mobile: 07867 560357

- FREE ESTIMATES • ALL WORK GUARANTEED •

Reduce your Accountancy costs

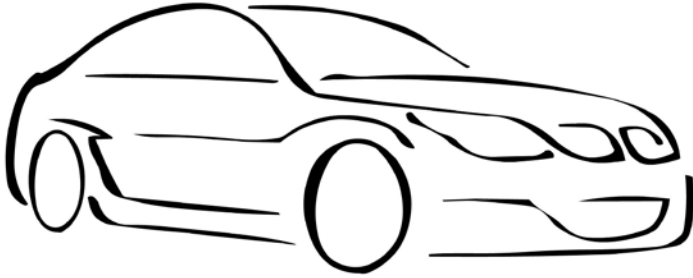
Call Sarah Place Accountants

Professional efficient Accountants with over 15 years experience

Accounts • Book-keeping • Payroll • Sage
VAT & Tax Returns

01284 747 139

FAST TEST STOWMARKET



MOT~SERVICING~AIR-CON

Fast Test can service all makes and models of cars and light commercial vans, as well as welding repairs, computer diagnostics and Air-Con re-gassing.

Fast Test can also offer a lift home or to work in the surrounding Stowmarket area or a courtesy vehicle.

Contact: Adam Bennett
Tel: 01449 770902

Address:
Unit 4, Tomo Business Park,
Tomo Road, Stowmarket,
Suffolk, IP14 5EP

Rushbrook's

— CHIMNEY SWEEP —

'Guild of Master Chimney Sweeps' registered Chimney Sweep, providing professional service to ensure your chimney is clean and safe for your home.

Services include:

- Open fire, wood burners and Inglenooks swept
- Stoves checked and serviced for efficiency
- Birds nest removal
- Safety Inspections and Smoke Tests
- All work fully insured & certificates issued.

Contact Robert Rushbrook

Email: rushbrookschimneysweep@hotmail.com

Telephone: 07581 352772 or 01449 612296



Orchard Garage DMS Ltd was previously run from Church Road, Stowupland.

We moved to Middlewood Green as a Limited Company in 2018. We have over 20 years of technical experience. Our goal is to deliver outstanding customer service to repair, service and MOT all makes and models to the highest possible standard at very competitive prices. We also can supply and fit tyres at very competitive price.

We look forward to welcoming you to Orchard Garage, please ring for a quotation or to book an appointment.

Telephone – 01449 711436

Email – Orchardgaragedms@outlook.com

Address – Orchard Garage DMS Ltd,
White House Farm, Middlewood Green,
Stowmarket, Suffolk, IP14 5HE



Arrow Taxi Services
"We'll get you there"

Weddings
Airports
Race Meets
Contract Work
4 to 8 passengers
01449 677677
arrowtaxiservices
@btinternet.com



Stowupland based
Carpenter and Handyman.
No job too small.
07940184002
ajp_services@outlook.com

COUNTY COUNCILLOR'S REPORT

DECEMBER 2023

Cabinet and Council meetings

Cabinet is due to meet on 30 January. The next full Council meeting will be on 15 February.

Council Budget for 2024/25

The Conservative administration published their draft budget on 3 January after what can only be described as a deeply disappointing level of grant from central government for the next year. Residents will be faced with council tax raised to the maximum and serious cuts to services that will affect us all.

In adult social care, where the number of people in need of provision is increasing, we are expected to accept a lesser service, or pay more. The administration acknowledges that complaints in this service sector will rise.

Cuts in children and young people's services include a 'redesign' of the skills team. The reduction in this service will lead to an increase in the number of young people who are not in education, employment or training (NEET). It will be the most vulnerable in Suffolk that will feel these cuts most.

The decarbonisation programme for schools is being discontinued, despite an aspiration to become the greenest county.

In order to balance the budget, the administration propose to take £18m out of reserves with no clear plan of how to replenish it. This appears to be in direct contravention of the council's own financial policies.

The cuts to theatres, the arts and museums have been widely publicised in the local press, with Dame Judi Dench calling on the Administration to think again.

Scrutiny Committee, of which I am a member, will be considering the proposed budget on 11 January.

Flooding in Suffolk

Recent high rainfall has led to many Suffolk residents' homes being flooded and flooding more generally on roads. At Council on 7 December, a motion was passed for the council to review the frequency of drain and gully clearance in areas at risk of flooding, and to work closely with districts and boroughs, Anglian Water and the Environment Agency to help prevent future flooding. My group had hoped to introduce further measures on regularity of maintenance, but this was not supported by the Conservative administration. The motion that was passed was preceded by an announcement by the council of £1m in extra funding to investigate flooding incidents in the county.

As well as the initial £500 grant payment and council tax/business rate discounts, residents whose homes have been flooded may also be eligible for up to £5,000 from the Property Flood Resilience (PFR) Grant, which the government requires Suffolk County Council to administer on their behalf. The application process will begin in early 2024 and after initial eligibility checks by SCC, property owners will be responsible for sourcing an independent surveyor and PFR contractor. Payment of up to £5,000 including VAT will be paid retrospectively to the property owner once the Council receives proof of the completed installation and invoicing for the approved measures.

Details of the scheme can be found at this link, with applications from January 2024: <https://www.suffolk.gov.uk/about/flood-recovery-information-for-suffolk>

Further information about the grant eligibility, conditions and the forthcoming application process can be found here: <https://www.suffolk.gov.uk/property-flood-resilience-grant>

National Grid - Sea Link Consultation Response

On Tuesday 12 December, Suffolk County Council Cabinet reviewed their proposed response to the National Grid's proposals to link up Suffolk and Kent with undersea cables and landfall at Aldeburgh and a substation at nearby Friston. Councillors in these areas were particularly concerned about the impact on the natural environment and the Suffolk coastline, with most councillors agreeing that engagement with the community about the proposals had been poor, and the timing of the construction coinciding with Sizewell C to create even more pressure on the county's transport routes and tourism industry. Cabinet decided that they would not lodge a holding objection at this stage, but their response to the National Grid consultation outlined their concerns and the possibility of objecting in future once more details were known.

SCC Carbon Net Zero Ambitions

The council's Scrutiny Committee met on Monday 11 December to review the council's progress towards becoming carbon net zero by 2030. Overall there had been a 10% reduction in emissions in 2022/23, due to reduced energy use for street lighting (a recent upgrade programme) and reduced gas consumption at SCC property and schools.

However, the council is not on target to be carbon neutral by 2030, at least partially due to the third scope of indirect emissions – this includes emissions by suppliers and contractors used by the council which are difficult to measure accurately and control. The supply chain represents 91% of the council's total footprint, and it has updated its contract terms and conditions to include annual reporting on reducing carbon emissions, and also requires suppliers to sign up to its Carbon Charter and Climate Change Commercial Ask.

Getting Children Ready for Education

On Thursday 14 December, the Council's Education and Children's Scrutiny Committee met to review the support the council provides to prepare children for school. This includes the county's nurseries and early years providers, health services for 0–5-year-olds and Family Hubs (formerly children's centres). In recent years the council has worked with the National Literacy Hub to try and engage children with reading, after research in 2020 concluded that educational attainment for Suffolk children was much lower than it should be.

The Committee acknowledged the good work that was going on in a challenging area and urged that recruitment of health visitors be prioritised by SCC to fill the current vacancies (21%). There were also plans to improve the council's digital platform - in partnership with parents - so they were able to find information and support more easily.

High School OFSTED report

The report following the inspections carried out in 2023 is due to be released on 15 January and will be available on the OFSTED website.

Local highways issues

Safer Route to School – There were representatives from SCC Highways, PROW and Schools Services, as well as the Academy, the village hall trustees, and Claire Pizzey represented the Parish Council at the meeting I arranged to get all relevant parties together; this was held on 28 November. Representatives confirmed a desire to complete the section between The Green and the main entrance to the High School building and I hope to hear from the Highways representative how this can be achieved. The next step will be to continue to the village hall land; trustees have suggested a route through their proposed access and car park and then onwards to FP46 adjacent to the Freeman School site.

A1120 in front of The Crown and Devon Road TRO – I am meeting the Local Highways Engineer again later this month to discuss progress.

A1120 Church Road – I reported the blocked drain on A1120 which has caused water to flow down the edge of the road from the High School entrance past the village hall entrance. SCC Highways have agreed to clear the blockage within ten working days.

I have also asked highways officers to carry out works to resolve the flooding problem near Freeman School and to check that flows out of the balancing ponds on Trinity Meadows have been attenuated to avoid excessive flows into the ditch upstream of A1120.

A1120 between Tesco and A14 – I have been pressing for work to be carried out to drain the carriageway so that the cones can be removed. SCC Highways do not consider this issue to be a high priority and improvement works are unlikely for some years.

High School – Public Footpaths

I am still waiting for a date for a site meeting with PROW officers and representatives from the High School. I have emailed another reminder.

Keith.Welham@suffolk.gov.uk
01449 673185 or 07831 705 714

AVC

Architectural
Consultant



07818 417 964
office@avcarchitectural.co.uk
Planning - Building Regs - Structural

**You could advertise your
business here for only:**

£10 per month
(Quarter Page)

£20 per month
(Half Page)

£40 per month
(Whole Page)

Please contact:
Sally Wray by email
adverts.telstar@hotmail.co.uk

STOWUPLAND COLLECTION POINT

If any individual, school, church or business would like to become a collection point for the Eco Future Group in Stowupland please contact Stowmarket Eco Future Group directly. Contact details can be found in their article.

Please don't leave your recycling on the editor's doorstep as I'm unable to help with this.

Ed.

JOHN BULL MOTORS LTD

**Petrol and Diesel
MOT testing
Servicing and repairs**

**Unit 7B Charles Ind. Estate
Stowmarket**

Phone: 01449 774150

Fax: 01449 675898

**Email:
Johnbullmotors@btconnect.com**

COUNTRYSIDE RAMBLER

BRIAN WARD

I would like to wish you all a happy new year, hopefully there will be less trouble and conflict in our world in 2024. The climate is a big talking point these days both politically and the citizens on the street. We all know the solution but are we and the governments of this world prepared to make sacrifices to reach the end goal? To date it is not looking good and the environment continues to be exploited and plundered; sorry, I had to get that off my chest. Enough of doom and gloom, let us all look forward to the early spring flowers and spring sunshine. Snowdrops will soon be in bloom along with aconites and celandines. Still a bit early for crocus but it won't be long. I have noticed catkins on the hazel and alder; the poplar trees will be next to bear catkins. So, whilst on your rambles look out for them. The early nesting birds are now starting to sing very tentatively on warm days; the song thrush and blackbird along with the robin are staking out their nesting grounds. The rooks will soon be tidying up their nests in the local rookeries and tawny owls will be calling for a mate, This is all depending on the weather as it is still early as yet and can swiftly change to arctic conditions overnight.

I was born in 1950 and my youth in the sixties was so carefree; I could walk anywhere day or night without fear. In the school holidays we would cycle for miles and even camp out overnight and return when our supplies ran out; no mobiles tracking us, only the local telephone box if we should need it. I know I must move with the times, but technology does frighten me at times. Yes, it is marvellous that you can access the world's media on a phone, with all the information you need at a push of a button; gone are the days of a bookshelf with reference books that held the information you were seeking. I cannot keep up and probably do not wish to keep up with technology at my age. I could not have wished for a better childhood, no stress, carefree and mental health was not heard of in children; at least I never heard it mentioned.

I apologise for the lack of nature and wildlife chat in this article, but I look around the world today and reflect on what a great time I had growing up.

Keep safe and well during the coming months and if you go for a ramble take care as the footpaths can be very muddy.

JJ'S Waste Services

- All Types Of Rubbish Cleared
- End Of Tenancy
- Garden/Garage
- Office Clearance
- All Types Of Scrap Metal Collected

FULLY LICENCED

Call Us On: **07912 172826**

www.suffolkwasteremoval.co.uk
johnjames1970@icloud.com

LET'S
GET
WASTED

**LUCAS & WYLLYS**
SOLICITORS

Established for 194 years & counting

 review solicitors
TRUSTED LAW FIRM


"EXCELLENT"

Quote 'TELSTAR' to receive 10% off Wills

Wills

from £175 plus VAT

Grant of Probate

from £700 plus VAT

Lasting Powers of Attorney

from £350 plus VAT (single)

Save 10% when purchased with a Will

Contact Serena in Stowmarket to book your free local home appointment.

enquiries@lucasandwyllys.co.uk

01493 855555

www.lucasandwyllys.co.uk



 National Paralegal Awards

2023

WINNER

Best Will Writing Paralegal

Serena Ely

www.nationalparalegalawards.com



BLUE LIGHT CARD. 10% off our fixed fees

STOWMARKET ECO FUTURE GROUP

<https://stowmarketecofuturegroup.co.uk>

Email: stowmarketecofuture@gmail.com



Collection of hard to recycle items (unfortunately we still cannot bulk collect medicine blister packs – please do not include them in your recycling items but take them if you can to a Superdrug Pharmacy, nearest one is Bury St Edmunds):

2nd Sunday each month (11th February) at Red Gables 2-4 pm plus REPAIR CAFÉ stowrepaircafe@gmail.com and 4th Thursday (NB NOT the last Thursday) each month 22nd February) on Market place 9:30 to 11.30 am.

We collect coffee pods, clean pet food pouches, toothbrushes and tubes, cheese wrappers and nets, pens, flattened crisp packets, make up packaging and Pringles tubes, also clean and flattened tetra packs – see our website for details [Terracycle Collections | Stowmarket Eco Future Group](#)

At the time of writing, there are 240 flood warnings in place as the rainfall from Storm Henk causes rivers and canals to burst their banks. Since Storm Agnes in September 2023 there have been 8 winter storms in 4 months and many of us have experienced problems with flooding or transport or know someone who has. The impact on homes and workplaces and the folk who live and work in them is immense; the knock-on effects on businesses, food production and prices, and future insurance costs has yet to be seen. There will always be a few naysayers, but the majority understanding is that we are experiencing the effects of climate change. What should make us sit up and take notice is that these events were predicted for 15 years' time and yet they are happening NOW! Flooding stories are putting URGENCY back into "Emergency"!

What we have seen in recent months is that some people have been forced to face up to the climate change emergency – they have had to put normal life on hold to deal with the problem. Those directly affected are painfully aware of the cost of climate change and of the dangers of continuing to live in the ways we have become used to. Things that were previously considered essential, might seem a bit less attractive now. It is a problem that is not going away so only a matter of time until even more people are impacted.

The better news is that mass action makes a difference. It needs to be on a scale that recognises and matches the "EMURGENCY" in which we find ourselves. Hopefully, this period of flooding will bring home the fact that our personal Carbon Footprint really matters – our homes, how much fuel we use, the flights we take, the food we eat, the way we vote, the interest we take in what is happening all really matters.

It is easy to feel helpless and hopeless in the face of such difficulties – we all get discouraged at times. Stowmarket Eco Future Group is your friend – you will find support and encouragement from other like-minded individuals. A lot of work and networking is going on alongside the more visible practical actions. You are very welcome to join us.

*If we have thought that the "younger generation" will solve Climate Change in the future, we now know that **it is up to us** – there is no time to wait for children to grow up.*

JUBILEE LADIES CHOIR

HAPPY NEW YEAR!

On a very cold evening in late November, we sang in Hitcham Church to help their fund raiser. The Church looked beautiful with exhibits by members of the Stowmarket Flower Club, which is always pleased to welcome new members, if you are a flower arranger or would like to learn arranging.

In December we did our main concert in our practice venue. We had a large and appreciative audience which made for a wonderful evening. Following that in December, visits to two local care homes to entertain the residents and to get them to join in with familiar carols, which they did.

So, after our post Christmas meal at Stowmarket Golf Club, we are now back practicing for our Spring/ Summer season. Popular songs, show songs, light classics - we sing a wide variety of music.

Practice is 7.30 p m on Tuesdays at the United Reform Church in Stowmarket, used by several choirs because of the excellent acoustics.

No auditions, no age barrier, young or more mature. We are just 40 or so women who like to sing and socialise. It's very therapeutic! New members always welcome. We have members from Stowupland and surrounding villages.

Come along to a practice and see if it might be for you or contact Di Balaam on 01449 736374 or me, Avril, on 01449 798365



SOAP Club

Calling all over 60's

Come along to meet old friends, new friends and enjoy a morning of company, activities & good cake in a welcoming social environment.

Our next event is

Wednesday 27 March 2024, 10:00 - 12:00

at Stowupland Sports and Social Club.

Please do join us.



If you would like any further information, please do email paulamurton@stowuplandpc.co.uk or call 01449 677005

School Trips and Learning Experiences

Year 6 enjoyed a trip to the Imperial War Museum at Duxford as part of their World War 2 history topic. They learnt about the role Duxford played in the Battle of Britain and discovered more about land warfare and American Airforce planes. They also enjoyed looking at all the exhibits and even went on Concorde!



Children in Year 4 visited The Longshed in Woodbridge to start their History Topic on the Anglo-Saxons. The children had a fabulous morning learning how to make rivets in the workshop and miniature longboats. They also spent time as archaeologists, digging for artefacts. They loved finding coins, runes, pots and jewellery. The Longshed volunteers were fantastic.



Seeing the vast longboat being made, trying on helmets and learning about King Raewald's treasures were a few of the children's highlights.



Children in Year 3 carried out fieldwork around Stowupland. They explored the question of *How are Green Spaces Used?* They found out that open spaces included tennis courts and dog walking areas. They decided they liked the play areas the best!



Year 2 have been learning about their local area in Geography and identifying features on a map by using key symbols. In their history lessons, all about the Great Fire of London, they used their knowledge of maps and landmarks to find out about key landmarks in Stowupland then and now.



Year 1 children recently travelled back in time to experience a Victorian school day. They learnt about the different kinds of punishments and lack of rewards for working hard. They managed to stay silent for the first part of the day and practised their Victorian handwriting, reading and times tables recital. They also experienced how it felt to write with their wrong hand and had a taste of gruel for their snack. Several children even asked for seconds!



A message from the Junior Road Safety Officers

We recently held our first whole school assembly on BE BRIGHT BE SEEN. We reminded everyone that now the days are getting shorter, fluorescent clothing and accessories show up well when walking or cycling to and from school. We also said it's best to choose routes and crossing places that are well lit.

We would like to say a **BIG THANK YOU** to Councillor Welham. We wrote to him asking if he could help us to buy a reflective pendant for every pupil to put on their school bag, some hi-vis jackets that we could wear during our JRSO patrols and prizes for our competitions to raise awareness of road safety. And he said YES!



Thank you, Mr Welham!

'From tiny acorns do might oaks grow'

IMPORTANT CONTACTS

Citizens Advice

www.midsuffolklcab.org.uk - 01449 676060
or 01449 676280 - 5 Milton Road South,
Stowmarket, IP14 1EZ

Doctor

Emergency - 999
NHS Direct - 111
Combs Ford - 01449 678333
Stowhealth - 01449 776000

Emergency Numbers

Power Cut - 0800 31 63 105
Gas Leak - 0800 111 999
Water Leak - 0800 771 881

Good Neighbour Scheme

HELPLINE: 07591 539621

Member of Parliament

Jo Churchill - jo.churchill.mp@parliament.uk -
Constituency Office, 10 Hatter Street,
Bury St Edmunds, IP33 1LZ - 01284 752311
House of Commons - 02072 198487
<https://www.jochurchill.org.uk/>

Mid Suffolk District Council

www.midsuffolk.gov.uk

Janet Pearson - janet.pearson@midsuffolk.gov.uk
07928 512592

Police

<http://www.suffolk.police.uk/contact-us>
<https://www.suffolk.police.uk/advice>

Police Safer Neighbourhood Team

PC 14443 Stefan Henriksen
stefan.henriksen@suffolk.pnn.police.uk Phone. 101

Samaritans – 116 123

Stowupland Village Website

www.stowupland.com

Parish Council Website

www.stowupland.suffolk.cloud

Suffolk County Council

www.suffolk.gov.uk 01449 673185
Keith Welham - Keith.Welham@suffolk.gov.uk
SCC - General Contact No. 0345 606 6067

Schools

Stowupland High School -
www.stowuplandhighschool.co.uk - 01449 674827
Freeman Community Primary School -
www.freeman.suffolk.sch.uk - 01449 612067

Vets

Cedarwood - 01449 676966
Stowe Vets - 01449 613130

DIARY DATES

FEBRUARY

THURS 1	14:00 - 16:00 Village Hall car pk.	Choose Refills mobile shop
THURS 1	19:00 Village Hall	Short mat bowls
THURS 1	19:30 URC hall	Parish Council meeting
SAT 3	09:30 – 13:30 Village Hall	Heart of Suffolk Farmers Market
SUN 4	19:30 Village Hall	Country & Western music club
MON 5	18:30 Village Hall	Tap dance class
TUES 6	16:00 Village Hall	SFC Younger Carers club
WED 7	14:30 various locations	Book Group (contact 01449 672127 for details)
WED 7	14:00-16:00 Village Hall car pk.	Mobile Post Office
WED 7	19:30 Village Hall	Local History Group “Stowmarket British School”
THURS 8	19:00 Village Hall	Short mat bowls
SUN 11	19:30 Village Hall	Country & Western music club
MON 12	18:30 Village Hall	Tap dance class
WED 14	14:00-16:00 Village Hall Car Pk.	Mobile Post Office
THURS 15	19:00 Village Hall	Short mat bowls

SAT 17	10:00 - 12:00 Church Hall	Coffee, Cake and Chat
SUN 18	19:30 Village Hall	Country & Western music club
MON 19	18:30 Village Hall	Tap dance class
TUES 20	09:30 Jubilee Crt. 09.55 Green	Mobile Library
WED 21	14:00-16:00 Village Hall Car Pk.	Mobile Post Office
THURS 22	19:00 Village Hall	Short mat bowls
FRI 23	19:30 Village Hall	Community Bingo
FRI 23	10:00 URC chapel	Coffee morning
SUN 25	19:30 Village Hall	Country & Western music club
MON 26	18:30 Village Hall	Tap dance class
THURS 29	19:00 Village Hall	Short mat bowls

LOOKING AHEAD

MARCH

SAT 2	09:30 – 13:30 Village Hall	Heart of Suffolk Farmers Market
SUN 3	19:30 Village Hall	Country & Western music club

Rachel Eburne - rachel.eburne@midsuffolk.gov.uk -
01449 673311

MSDC General Contact No. 0300 1234000

Mobile Library - 07721 879855

Parish Council

Donna Bridges - Chairman - 07736 348335
donnabridges@stowuplandpc.co.uk

Laura Beeson - 07918 808387

laurabeeson@stowuplandpc.co.uk

Laura Johnson - 07826 851030

laurajohnson@stowuplandpc.co.uk

Debra Melhuish -07979125904

debramelhuish@stowuplandpc.co.uk

Paula Murton - 07906 677817

paulamurton@stowuplandpc.co.uk

Ray Studd - 01449 676606

raystudd@stowuplandpc.co.uk

Jerry Voden - 01449 703717

jerryvoden@stowuplandpc.co.uk

Clerk to the Parish Council - Claire Pizzev
parishclerk@stowuplandpc.co.uk - 01449 677005

2 Broomspath Road, IP14 4DB

*Parish Council Minutes of meetings and agendas
are available on the Parish Council Website
www.stowupland.suffolk.cloud*

Village Hall Bookings

Lisa Tunbridge - Phone - 07862740830
stowuplandvillagehallbookings@gmail.com

Village Clubs

Baby and Toddler Group - Kayleigh Simpson -
01449 678550 admin@stowuplandpreschool.org.uk

Book Group - Patricia Hodgkins - 01449 672127

Stowupland Bowls Club - Graham Newman - 01359
240846

Community Events - Keith Welham - 01449 673185

Country and Western - Pat Murphy - 01449 677405

Dance Club - Mary Durham - 01449 672601

Local History Group - Jerry Voden - 07951 086383

Short Mat Bowls - Pam Fayers - 07713026696

Sports and Social Club - Mark Dye - 07799 662491

Stowupland Cricket Club

www.stowuplandcricketclub.co.uk/

Stowupland Falcons Football Club -
stowuplandfalconsfc.co.uk

Stowupland Sports Centre -
info@stowuplandsportscentre.co.uk - 01449 672531

Stowupland Wildflower & Biodiversity Group -

Keith Welham - 01449 673185

Stowmarket Wildlife Group - Heather Salmon
-heathersalmon50@gmail.com - 07722 871205

Superstitions, Misplaced Participles, Happiness, Biscuits, Royalty and Travel.

Now for something completely different!

Did you understand the Pythons?
Or had you not a clue?
Remember the dead parrot sketch?
A bird, Norwegian Blue.

You must have had a favourite,
A tin of spam to roast.
But having checked the menu
You perhaps had spam on toast.

The Spanish Inquisition,
Made fun of people's pain.
Nobody expected them,
They just came back again.

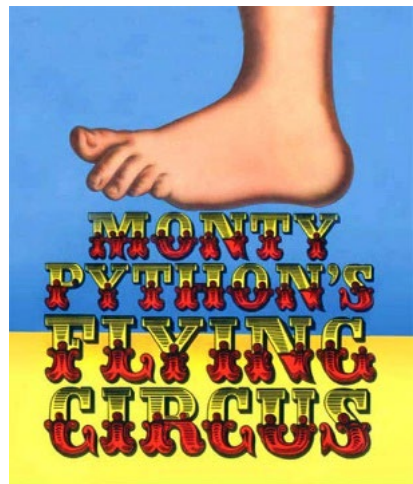
And then there were the Yorkshire men,
Their house it had no door.
Their family had no money,
They saved up to be poor.

Did you want to be a lumberjack?
Each day to fell a tree.
And when you'd finished working,
Have buttered scones for tea.

Do you recall the cheese shop?
Buying from a stall.
Viewers found this funny,
There was no cheese at all.

Do you remember arguments?
The clinic put you right.
It sometimes ended peacefully,
But usually with a fight.

The music was appealing,
The graphics had us crying.
The sound came from the Liberty Bell,
'Twas Monty's Circus flying.



STOWUPLAND WILDFLOWER AND BIODIVERSITY GROUP



Holy Trinity Christmas Fair

The group set up a stall at the Church Christmas Fair in the village hall on 18 November. We displayed a map of Stowupland and photographs showing our activities at various locations around the village. We had made up small packets of a mix of wildflower seeds and sunflower seeds and gave these to anyone showing an interest. Between 10.00 am and 4.30 pm we gave away around 150 packets of seeds and discussed a range of issues with most of those attending – probably around 200 people, possibly more. Three people asked to join our group as members and more asked if they could be informed of activities that they could join in with.

Main topics of interest were:

- How to start a wildflower patch at home – and we were able to give advice and a small packet of seeds.
- The wildflower meadow on The Green – Most people we spoke to were interested in our approach and understood that it will take time for wildflowers to dominate the grass. Many appreciated the added diversity, especially insects. Some expressed a desire for other parts of The Green to be allowed to 'go wild'. A smaller number said that they preferred the majority of The Green to be mown regularly.
- Bees – Fudge made in Stowupland by a member of our group using honey from her own bees was a great attraction and prompted discussions about attracting bees and other insects which need pollen.
- Hedgehogs – One of our members displayed hedgehog themed cards which were available for visitors to our stall; a small donation was requested and £20 was raised for the Prickles Rescue Centre. We are keen to raise awareness of hedgehogs and we will be considering ways to make Stowupland a hedgehog friendly village – see the separate article below.

Wildflower Meadow - Strips within the area of the meadow closest to the pond have been scarified and wildflower seeds provided by MSDC have been sown. There were only sufficient seeds for less than a quarter of that area. Later this year we will sow seeds over a much larger area.

No Mow May 2025 - Most people we spoke to at the Christmas Fair said that they would prefer that more areas of The Green are left uncut in May to enable flora such as buttercups and clover to provide pollen for bees and other insects. We have asked the Parish Council to seek the views of residents so that they can be considered by the Parish Council in future.

Work With Schools - The work to provide raised beds for the High School students has been curtailed due to the need to provide temporary teaching accommodation. However, it is anticipated that some raised beds can be put in place for students to start to grow vegetables next spring. We are awaiting delivery of apple and plum trees, from MSDC for planting within the old orchard and former temporary car park.

At the Mulberry Centre, we have prepared areas for planting wildflower seeds and bulbs, and provided the seeds, bulbs, and hand tools. Next spring, we will be putting in place two raised beds for students to raise vegetables from seed.

Funding for 2024/25 - Our bid for £700 was agreed by the Parish Council. This will allow us to improve the wildflower meadow, provide materials for our work with schools and raise awareness through events such as the Spring Fair in the Village Hall in April.

Tree Planting - We have received some fruit trees – a range of local varieties – which we will be planting within the High School site to form mini-orchards. Also, the Parish Council have asked us to put together proposals for increasing the tree cover in Stowupland. The tree cover in Mid Suffolk is only 8%; MSDC are hoping to increase this to at least 15%.

A Greener Parish - We have asked parish councillors to meet with us to discuss how to make Stowupland a Greener Village. We would like to see a village-wide approach to contributing towards encouraging diversity and contributing towards climate reduction.

Next Meeting - The next meeting of our group will be on 11 March at the URC Hall commencing at 7.30pm. Everyone interested in biodiversity issues or helping with any of our projects is welcome to attend or to join in as a volunteer. Please contact Keith Welham on 01449 673185 or keithwelham48@aol.com.

Hedgehog Awareness – Making Stowupland a Hedgehog Friendly Village

Hedgehogs are excellent allies in maintaining the balance of the garden ecosystem. They dine on aphids, larvae, beetles, earthworms and snails that can damage the plants in our gardens. Hedgehogs are also an indicator species because they let us know when the habitat is healthy. If there's a hedgehog about, we know that that area is healthy. Hedgehogs are important for conserving biodiversity.

The Suffolk Wildlife Trust (SWT) hedgehog representative will be working with our group to develop an action plan to make Stowupland a 'hedgehog friendly village.' The plan could include:

- Encouraging the primary school and other local groups to make their grounds more hedgehog friendly.
- A local survey to estimate the current number of hedgehog highways in Stowupland.
- Encouraging and advising people who wish to make their gardens more hedgehog friendly.
- Consider ways people can network, perhaps by setting up a Stowupland Hedgehog WhatsApp group.
- Setting up footprint tunnels borrowed from SWT.
- Trial of trail cameras, with a view to purchasing in the future.
- Consider how to showcase gardens which are hedgehog friendly – maybe an award?
- Maintain a record of the number of hedgehog friendly gardens.

If you are interested in participating in this action plan, please email Don Mobley, who has offered to lead on this project for the Stowupland Biodiversity Group at onesbingo@gmail.com. The Group will then arrange a meeting with SWT to develop and initiate an action plan to create a hedgehog friendly village.

RAMBLINGS FROM THE POTTING SHED

PAULA WILLMOT

Welcome to a New Year and the joy of looking forward to the warmer Spring months. I am delighted to be taking over this column from Kate Elliot who has been your trusty gardening guide for the last 4 years. I hope I can do justice to the responsibility of keeping you all 'on track' with monthly gardening advice, top tips and good places to go for information.



Having recently moved back to Stowupland after 40 years in the RAF, I've had the pleasure of creating 6 gardens as I have moved around with the Service. I was born here and attended Stowupland Primary school during the reign of Mrs 'Tilly' Tilbrook and Miss Lay....yes, the 60's. I then went to Stowmarket Middle School then back to Stowupland Upper School as it was known then, in its second year of opening. Life in the RAF then took over and I returned to Stowupland in August last year, taking over one of the Crown Meadow plots. You will often see me maintaining the meadow out front so do please cross over if passing, I'd be delighted to chat and pass the time with fellow villagers.

So, what's happening this month and what can we start looking forward to? One of my first jobs has been improving the heavy clay soil in a new garden. You will all be familiar with the difficulty of turning such heavy soil in the winter when the ground is waterlogged and uninviting for any plant!

Here's my list for February:

- Turn the soil in raised beds and break down as much as possible, overlay with soil improver and wait for the frost to do its work. Towards the end of Feb we'll be warming this soil up for early seedlings and plug plants.
- Start to organise your seed boxes. I made a small seed box from a shoe box and have created a 12-month pocket system, so I know what I am planting this month. Gardening magazines start to attach seed packets and you can slot the February's into the right pocket ready for sowing.
- Ensure you start to clear any border areas where you want to place new plants and, again, turn over with some mulch in readiness.
- Clear away any soggy and collapsed perennials and compost so the space is clear for new growth as the weather warms up.
- If you have climbing roses, continue pruning while they are dormant.
- It's a good time to move deciduous shrubs that are in the wrong place. I do this regularly in my gardens as sometimes I really do get it wrong!

So, there's a few jobs but gardenersworld.com is a really good resource to keep you on track with the monthly gardening chores. I'll always highlight a few each month as well as sharing any top tips from our television gardening teams. It's interesting to note that Monty Don is already planting his seed trays in his potting shed, spring salad leaves, tomatoes and chillies. If you don't have the luxury of a potting shed or greenhouse, a spare windowsill will work just as well.

I think, like many of you, I am still waiting for that prolonged cold snap that we normally experience in January or February and am therefore hesitant on putting anything in my garden with soft tender leaves. My bulbs are all sprouting and my cherry trees are full of blossom....how topsy turvy the seasons are becoming. But a big part of the pleasure of gardening is learning by trial and error. This has certainly been my experience over the last 30 odd years. Yes, there is a frustration when the squirrels eat all your bulbs, or the soil is just not right for that plant, tree or rose that you really want to grow. However, over the next few months I will aim to give as much advice from experience as I can. I will also provide links to my favourite sites on social media as they are a great resource for gardening tips and blue sky thinking. Only yesterday I was watching a young gardener take heaps of fig tree 'sticks' and planting them horizontally in seed trays creating literally dozens of new trees, definitely one tip I shall be using this year.

So, until next month, use the cold rainy days wisely and reach for the old gardening magazines and books to start planning for this year. If you have the i-player, re-watch some of the fabulous gardening programmes that have been broadcast in 2023 and dream a little....but most of all, get a bit excited about the warmth of the months to come, they will be here before you know it!

Andrew Bingham

INDEPENDENT FUNERAL SERVICE

Stowmarkets *Independent Family Funeral Service*

24 Hour Personal Service • Private Chapel of Rest • FREE Parking



Telephone: **01449 771666**
www.andrewbingham.co.uk



The Nutshell, Milton Road South, Stowmarket, Suffolk IP14 1EZ

Golden Charter
Funeral Plans 

I've built up a bit of debt and I am panicking. Even though I cut back, Christmas was expensive, my rent has gone up and my paycheque just doesn't stretch as far as it used to. I'm doing everything I can but it's not enough - what can I do?



Mid Suffolk

First of all it's important to know you're not alone in finding things difficult and, crucially, there's support available.

You say you've built up a bit of debt. The first step is to collect all the information you have about your debts. This might include contracts, bills and statements.

Next, make a list of your debts and write down the details of each. This could include whom you owe the money to (this person/company is your 'creditor'); when you first missed a payment; and how much you now owe. You'll also need to make a note of your account or reference number and what steps the creditor has taken to get the money back, e.g. sending you letters.

It might feel overwhelming when you see all of your debts written down - but try not to worry, the important thing is that you're sorting them out.

If you're behind on household bills, prioritise paying your rent or mortgage, plus energy bills and Council Tax first. Not paying these bills has the most serious consequences. You should speak to the person or company you owe money to, to see if there are any manageable steps you can take to start reducing your debt.

Once you've got these debts under control, you should look at any other debts like credit card or store card debts, payday loans or missed Buy Now Pay Later payments. While you're looking at the money going out, do remember to consider money that could be coming in. It's always worth checking if there are any benefits that you're eligible for, including support with your energy costs and living costs.

There's a benefits calculator, advice on how to reduce living costs and information on other ways to increase your income on the National Citizens Advice website at citizensadvice.org.uk.

There's also emergency support that you may be able to access locally, such as a food bank, local welfare support or fuel vouchers. We know that times are incredibly tough but please remember, you don't have to face this alone.

Citizens Advice Mid Suffolk can provide in depth advice on this issue and much more, including debt, finances, employment, benefits and family/relationships. You can contact them by phone on 01449 676060, visit in person at Milton House, 5 Milton Road South, Stowmarket IP14 1EZ or use the contact form at midsuffolkcab.org.uk/contact-us. Opening hours are Monday-Thursday 9.30am – 3.30pm and Friday 9.30am – 12.30pm.

Could you spare a morning or afternoon a week to help local people in need?

Citizens Advice Mid Suffolk support local people by providing free, confidential, independent and impartial advice. Demand for the charity’s service has continued to increase, and the wonderful team of volunteers are so important to the help Citizens Advice provide.

Could you be a friendly face to greet people?

The charity are in need of volunteer receptionists to spare a morning or afternoon a week, as a friendly face to greet people who come into the Stowmarket office.

Could you help people find a way forward?

Volunteer advisers talk to local people on the phone, face to face and online to explore their problems and the options available to them.

No experience is needed for either role, as training will be given, and you will be part of a friendly team of existing volunteers supported by specialists and supervisors.

Citizens Advice volunteers come from all walks of life and choose to volunteer for a variety of reasons.

Current volunteers said:

“I volunteered to help others, but didn’t realise how much I would get back! I love the feeling of satisfaction at the end of the day and the feeling you get from being part of a brilliant, friendly, professional and happy team.”

“You gain skills and experience that stay with you for life. There is a great support system in place...it makes you feel like you are part of something great.”

“The most enjoyable part of volunteering is seeing the difference we make. You meet a person who might be nervous and not know what will happen to them. At the end of the day they leave smiling and thanking you for all that you have done for them.”

“Volunteering with Citizens Advice is not only mentally stimulating but also very rewarding.”

Volunteers are Citizens Advice Mid Suffolk are often looking for ways to make use of their skills or to gain valuable experience and make use of the fantastic training. They also enjoy the opportunity to meet different people and be part of a friendly, welcoming team of existing volunteers. They find it rewarding to support local people and make a difference to their lives.

Interested in volunteering?

Citizens Advice Mid Suffolk would love to hear from you! Go to midsuffolkcab.org.uk/volunteer or call 01449 676060 for an informal chat.





LOCAL HISTORY GROUP

Stowupland's Local History Group wishes everyone a healthy, peaceful and successful 2024. We get our new year off to an enjoyable start with the return of Gill Marchant. In 2023 you may remember she shared with us her research into Stowmarket's National School. On **Wednesday February 7th** (Village Hall, 7:30) she returns to tell us about their competitors, the **Stowmarket's British School**. Come along and find out why the town's people wanted a choice of education for their children. If Santa didn't bring you a good read, our Bring and Buy Book Board will be open for business again. You don't have to bring a book; we just ask you make a small donation and find your next read to while away the winter months.

If you are a member of our group, Christine will be chasing you (nicely) for your annual membership subscription (frozen at £15:00) but then you just pay £2:00 per meeting. We always welcome visitors, so if you are not ready to join our group, please come along and find out about the history of your local area. Regrettably, we have had to increase our visitors' subscriptions to £5:00 per session.

Please contact Jerry on 01449 703717 or voden@btinternet.com if you want to make a comment or have a query about Stowupland's history or our meetings.

If you can't make February, our next meeting will be Wednesday March 6th when Sarah Doig returns to talk about Angels and Demons as seen in Suffolk Churches. This was originally booked for November 2023, but a disrupting deluge of demonic inundation intervened, so instead we heard about her research into the life and work of Basil Brown. Hopefully by March we will be enjoying mild spring weather and looking forward to warmer days and lighter evenings.

For those of you who missed it, here is Sarah's talk in the words of our secretary, Jerry Voden

Stowupland Local History Group discovers the real "Basil Brown."

Thank you to Neil for getting Sarah Doig to talk on this subject. Sarah was originally booked for November 2023 to talk to us about Angels and Demons in Suffolk Churches but due to unforeseen circumstances this talk has been postponed until March; instead, she reverted to one she had prepared earlier. Those of us who attended in November 2023, were reminded of a talk we had in 2021 by Charlie Haylock who spoke to us of his experience on the film set of The Dig, working with Ralph Fiennes who played the part of Suffolk archaeologist Basil Brown. Well, Time and Telstar move forward, and you will be reading this as we get into February 2024.

Most of our group thought we already knew the real Basil Brown, but after Sarah's talk we were very much more informed than we thought we were. I at least thought that a big portion of his life was taken up with the discoveries his team made at Sutton Hoo in May 1939. It was a surprise to learn that this had only been a couple of months of his life and the vast majority of his work revolved round his note taking and research into other aspects of the past. Fortunately, his many notebooks are available to us (or at least were to Sarah) and she showed us many examples of his research.

He had been born in 1888 and spent his early life around Rickinghall at Church Farm and there are records of Basil attending the infants' school there in 1893. Records show that at the time he seemed to dislike history and would try to prove his very patient history teacher wrong at every turn in the lesson. 1912/13 saw him leave school to work on his parents' farm.

War came in 1914 and Basil volunteered for military service; however, he was not passed fit to join up so continued to work on the farm. Farming was an important occupation during these times, but he applied again in early 1918 and was taken on in the Royal Army Medical Corps and served for a year. He met his wife Dorothy in 1923 and married, and they both continued to work on the farm. He also wrote books to help out with the family income, and helped out on various digs that were organised at the time, overseen by the Ipswich Museum. His big break came in 1939 with the Sutton Hoo discovery.

1939 saw war again; this time Basil volunteered as a Special Constable in the village, also helping with the Navy, Army and Airforce Institute (NAAFI) which had been set up in Bury St Edmunds. He was also a member of the Royal Observer Corps, so he had a fairly busy war, and, in the main riding his bike round the county, he also continued his writing during this time.

He suffered a stroke in 1968 but was able to continue with his work for some time after this. Sadly, at the age of 89, Basil passed away on the 12th of March 1977. Sarah had access to a lot more material and had worked hard to decipher the notebooks and written work; this was shown in the slide show she supplied. After the talk Annie and Liz provided the refreshments and Sarah answered our audience questions. I will leave it to those present to decide if they now know "The Real Basil Brown."

With no January meeting to prepare for I have been looking through our archive material and thought I would share a few items that reflect what was happening locally at this time of year in times past. I am so grateful to all the people who over the last decades dedicated so much time and effort into researching and recording aspects of Stowupland's history.

- A press report in February 1886, tells us that **diphtheria** was 'prevalent in Stowupland'. An Issac Diaper who was living on the Green had '4 children affected, 2 of whom died'.

- In January 1846, 'the wife of Mr William Morgan, paymaster & purser of HMS Nimrod delivered of a daughter'. In 1846 HMS Nimrod was carrying emigrants from Liverpool to Australia. The wife was Sarah Boby and she had married William in 1820. Sarah's brother was Robert Boby and they had lived at The Ashes. Robert married Elizabeth Sadler and in the mid-19th century they were living at Columbine Hall
- The Ashes are no longer in Stowupland, but in Feb 1759 and again in March, The Ashes farm was up for sale. At that time, the occupier was Charles Beard paying a yearly rent of £15.00.
- From Jan 1786 – 'last week was married at Stowmarket Mr Mullender of Stowupland in the 53rd year of his age to Miss Roper of the same place in her 20th year.'
- From the Freeman's diaries (The Freeman family owned Stowupland Hall in the 19th century) - in February of 1826, a horse fell down whilst in harness to a cart and broke 2 ribs 'Doctor Pizzy 'bled her'- we don't know the outcome.
- And in the following year Mr Freeman tells us that 'George Southgate was transported for 7 years for stealing flour'.
- Going back to the 15th century for extracts from a will of a local lady. This was originally written down in Latin but thankfully we have a transcribed version. At this time, most people left money to the church for prayers to be said for their souls for generations to come (or at least till the Reformation!). Presumably, many of these wills were dictated from a death bed. N.B. Stowmarket church, i.e. St Peter's Church of Stowe, was the local church for the population of Stowupland.

In January 1462 Alice Thystelden, for long the wife of Robert Kent of Stowmarket, amnst the goods she left 're disposal of goods for my soul & the soul of Robt Kent my late husband & for all our benefactors & friends:

- *My 2 best gowns, a green silver belt, a green & blue cloak & a principal violet tunic, all to be sold & the money disposed viz: -*
- *To the parish church of Mendlesham 6s 8d*
- *To the poor there 6s 8d where it appears necessary an annual stipend to be disposed to an honest chaplain for a year*
- *A pair of my best beads of jet with silver paternosters to be given to the maintenance & reparation of the praise and ministering before the image of the Blessed Mary in the chapel of the Blessed Mary of St Peter's Church of Stowe to serve them in perpetuity & never to be removed.*
- *My 3 principal sheets to be sold & the money used for ministering in the chapel of the Blessed Mary there.*

- -my best green & blue cover & a brass pot, a brass bowl of 4 gallons & a dozen best pewter vessels to be sold & disposed for our souls.
- Thos Cook my brother to have my feather bed in remembrance of me.

It was to be nearly 400 years before the residents of Stowupland had a church built within and for their community, by which time ideas of leaving money for prayers to be said for their souls had changed.

Out & About



You may have noticed this striking Celtic Cross in our churchyard. The inscription has now weathered to the extent it is no longer legible, but it is a reminder that the founder of our Holy Trinity church chose to be buried in our parish. Arthur Hollingsworth died in Felixstowe in January 1859, at the age of 56.

Those of you who use Facebook will have seen that 2024 is the 20th anniversary of Stowmarket Local History Group. They are embarking on an ambitious project of posting 'an interesting fact, anniversary or event relating to the town' for each day of 2024.



HOLY TRINITY

VOLUNTEERS NEEDED

New for 2024 - would anybody like to join a small and enthusiastic team of volunteers who each spend a few hours every month or so ensuring our village church is clean, bright and welcoming?

We are a friendly group and would love to hear from anyone who might be interested in helping.

Please ring Cathy Welham on 01449 673185 to find out more.



STOWUPLAND FALCONS



Happy New Year!

Stowupland Falcons as a club are going from strength to strength with all teams filled to the brim from youths to adults. It is fantastic to give so many players an opportunity to do what they love.

Unfortunately, on the playing front, the weather has played havoc with so many fixtures being cancelled due to waterlogged pitches around the Christmas period, Let's hope the rain will stay away long enough to give a welcome respite so we can resume playing. We are now at the halfway point of the season, but we are looking for volunteers to help with pitch maintenance and other tasks on match days or generally; if you would like to put yourself forward to help within the club that would be fantastic.

In the next few months, we hope to do some fundraising, with quiz nights and an Easter hamper draw.

Everyone at the club would like to wish you all a very happy and healthy new year and thank you for your support.

Mark Dye

Facebook – Stowupland Falcons FC | Twitter - @StowFalcons | Instagram

07534 525 263
01449 258 254

Gidney 
Plumbing & Heating Ltd

Professional & Reliable Service



**Plumbing, Bathrooms, Heating, Boilers, Servicing,
Underfloor Heating, Tiling, New builds & Renovations**

enquiries@plumbinginsuffolk.com www.plumbinginsuffolk.com



MORAR

LIVING

Langham Manor, Stowmarket

A warm welcome to Langham Manor care home. Langham Manor is a purpose built 75 bed luxury care home situated close to the town Centre on Prentice Road, Stowmarket. Expertly designed, the home provides the highest standard of safety, comfort, and care in small cluster living areas for not only those who require Nursing care, Palliative/end of life care, but for those that need a little more extra layer of support in their day to day living. The home is modern and the attention to detail is impressive. The high specification and décor of the home has been carefully considered by an interior designer, creating stylish yet comfortable practical and private spaces.



**Enquire now – enquiries@moraruk.co
0330 174 6738**

Food Museum secures grant from The National Lottery Heritage Fund



The Food Museum in Stowmarket has been awarded a development grant of £353,937 from The National Lottery Heritage Fund towards The Kitchen Project, a multi-year programme of activities and capital works. This is a significant step in the multi-million pound redevelopment of the museum's 84-acre site.

Over the next 18 months, the museum will appoint an architectural team and develop plans and partnerships in order to submit a stage 2 application for further support in early 2025. Made possible by National Lottery players, the project will ultimately deliver 5 years of exciting and engaging collaborative programmes of activities and exhibitions, including creating new opportunities for volunteering. It will also transform the presentation of a group of buildings at the centre of the museum's large 84-acre site. This will include re-erecting the medieval timber-framed 'Edgar's Farmhouse', representation of a historic Victorian factory space, two Second World War huts and works to the stunning Grade II* Medieval Barn. The museum aims to create an interactive display of historical kitchens with food from different eras.

Over the next year, the museum will be developing a 'School Dinners' exhibition and activity programme in collaboration with others, including the Museum of the Home in East London and the Quadram Institute. There will be opportunities for schools and a small number of 16-18 year-olds to get involved, via a Young Curators scheme which will be launched in spring.

Jenny Cousins, Director, said: 'This project is going to be great fun! It's going to enhance our hands-on visitor experience, improve access and create lots of opportunities for people to get involved. It will transform a group of historic buildings at the heart of the site, improving their condition and creating new displays. It will explore many topics and historical periods and involve lots of other organisations. We've had a really good year and this is absolutely the cherry on the cake!'

About The Food Museum

The Food Museum connects people with where food comes from and the impact of our choices: past, present and future. We explore a range of subjects – social history, the environment, agriculture and industry – under the organising theme of 'grow, make, eat'.

The museum life as a volunteer-run rural life museum in 1967 and became the Food Museum in April 2022. www.foodmuseum.org.uk

About The National Lottery Heritage Fund

The National Lottery Heritage Fund grant applications over £250,000 are assessed in two rounds. The Kitchen Project has initially been granted round one development funding of £353,937 by The National Lottery Heritage Fund, allowing it to progress with its plans. Detailed proposals are then considered by The National Lottery Heritage Fund at second round, where a final decision is made on the full funding award of £2m.

Using money raised by the National Lottery, we Inspire, lead and resource the UK's heritage to create positive and lasting change for people and communities, now and in the future. www.heritagefund.org.uk

Follow @HeritageFundUK on Twitter, Facebook and Instagram and use #NationalLotteryHeritageFund

Since The National Lottery began in 1994, National Lottery players have raised over £43 billion for projects and more than 635,000 grants have been awarded across the UK.

For further information, please contact Ellen Harling, 01449 618238, ellen@foodmuseum.org.uk

The Food Museum and EA Sustain present Food for Thought: a talk series about what we eat.

Acclaimed food writers and farming innovators come to Stowmarket for a new talk series.



Foodies and environmentalists alike can get inspired at the Food Museum in 2024 with *Food for Thought*, a special talk series exploring what we eat. The Food Museum is partnering with EA Sustain, an environment, culture, and entrepreneurship festival, to present thought-provoking talks about the sustainability of our food industry.

Food for Thought will feature acclaimed writers and innovators sharing their knowledge and expertise.

Award-winning author of *The Ethical Carnivore* Louise Gray will join us in March to discuss her newest book *Avocado Anxiety*, tracking the stories of our most popular fruit and vegetables from farm to fruit bowl along with their carbon footprints. In April, writer, campaigner, and food policy expert Rob Percival joins us to discuss his critically acclaimed book, *The Meat Paradox*, exploring meat-eating throughout human civilisation and how we can both love and eat animals.

The *Food for Thought* talks take place in conjunction with the Food Museum's annual exhibition *Meat the Future*, which presents cutting-edge research on the environmental impacts of animal agriculture. Audiences will be able to take in the exhibition before and after the talks, as well as enjoy delicious tasters made with alternative proteins, edible insects, and sustainable produce.

The hour-long talks take place on Saturday 2 March and Saturday 6 April, 2-4pm. Tickets are £18 per talk. A 10% discount is available for under-25s and Food Museum members on individual tickets.

Find out more and book at:

<https://foodmuseum.org.uk/events/food-for-thought/>

STOWUPLAND VILLAGE HALL

REVISED REDEVELOPMENT PLANS

In the November Telstar we gave you the latest details of the plans for the redevelopment of Stowupland Village Hall. As we mentioned, a planning application had been submitted to Mid Suffolk District Council and we are delighted to tell you that application was approved; so we now have planning permission to proceed. There were some conditions attached, and some negative comments were received from the public, so we have decided to try and address all of those by making changes to the plans – most of these are minor such as moving the location of the recycling centre and using hedging rather than close board fencing in places.

Unfortunately, we had some unwelcome news on funding as we were informed that the CIL money available from Mid Suffolk District Council was limited to £100,000 per project – we had previously been told there was no limit, and we were assured we should get the bulk of the funding from there. That means we face raising over £3m with no significant donations lined up. The trustees think this will be very difficult to raise. The trustees took advice from our architect and quantity surveyors on how we could reduce the cost of the proposals to a more realistic budget. They advised if we:

- Knocked down the existing building and built a completely new building it would be cheaper as there is no VAT on new buildings but there is VAT on refurbishing and extending old buildings. (VAT was going to be about £500,000.) It would also make the rebuild quicker so we would lose less income from rentals whilst the work took place.
- Rationalise the toilets we planned – the plans had three separate blocks of toilets which are expensive to build. If, instead, we build one single block of shared toilets that would save significant costs. We would still need toilets in the changing rooms as well.
- Rationalise the kitchens – we were planning three. If we can instead have one shared kitchen and simpler kitchen areas in the Bowls Pavilion and Social Club, it would save money.
- Drop the plans for an upstairs – whilst this would lose us an additional meeting room it would save about £300,000, which is a lot for one room.
- Change the layout of the building to reduce corridors as these are effectively wasted space.

Making those changes would potentially halve the cost and we would still end up with:

A new Pavilion for the Bowls Club.

- New and expanded changing rooms for the Football and Cricket Clubs.
- More storage in the Village Hall for chairs, tables and Hall users' equipment.
- A new committee style meeting room.
- A new room for small meetings.

- Improved toilets and kitchen facilities.
- Improved bars for the Social Club and Village Hall.
- New, rather than refurbished, Village Hall and Social Club areas.
- Solar panels with battery backup to significantly reduce our electricity costs.
- Better insulation, heating and lighting to significantly reduce the carbon footprint and running costs of the site.
- New improved outdoor storage facilities for the Bowls, Football and Cricket clubs replacing the current mixture of sheds and a storage compound.
- Widened and extended path across the site to improve access and safety for those visiting the Village Hall or just passing through. This could form part of the Safely to Schools route across the Village Hall land should that plan ever get agreed and completed.
- Increased Biodiversity across the site with more trees and areas for wildlife and plants.

Given this option effectively gives us a better building than we have now for a much lower cost, the trustees decided they wanted to pursue this option. The trustees recognised that some people might be unhappy about losing the old Village Hall, given it was originally built by local volunteers, but on balance we felt the additional cost of about £1.5m if we keep the existing building could not be justified. If you feel strongly this is not a sensible idea, please let us know by emailing stowuplandvillagehall@gmail.com; otherwise, we will proceed on that basis.

As this change of plan will require a revised planning application, we have put back the target date for starting the new build and are therefore now taking bookings for 2024.

Stowupland Village Hall Trustees

Stowupland Village Hall

Excellent facilities - competitive prices



Our Village Hall is just the place for clubs and groups to meet or for special functions, such as parties, receptions and exhibitions.

There is one large room suitable for 140-260 people depending on the event. A small one seats up to 20 people. There is a well equipped kitchen, and a licensed bar, plus an audio-visual system and Wi-Fi. There is ample car parking and an outdoor children's play area.

Interested? Look on our website at <https://hallbookingonline.com/Stowupland>

Or contact Lisa Tunbridge our booking secretary

Tel: 07862740830 email: stowuplandvillagehallbookings@gmail.com



Heart of Suffolk Farmer's Market

First Saturday of each month
9:30am - 13:00pm

Introducing the Heart of Suffolk Farmer's Market!

Indulge your senses in a celebration of local flavours and community spirit
at the all-new farmer's market proudly presented by
the Heart of Suffolk Distillery.

Join us at the community focused Stowupland Village Hall for a vibrant
gathering of the finest local producers showcasing an array of delectable
food, drink and craft products.

Come savour the essence of local life at the Heart of Suffolk Farmer's Market!

Free Entry

All Local Vendors

Stowupland Village Hall
IP14 4GB

Free Parking

Launching On:

Saturday 3rd
February 2024!



F. G. BROWN – OPTICIANS

Denmark House, 41 Bury Street,
Stowmarket.

Tel:- 01449 612812/674030

**As independent opticians we offer a more
personalised eyecare service that you can trust for
all the family including:-**

**Optomap retinal examination
Colorimetry**

**A wide range of competitively priced frames
and spectacle lenses**

Contact lenses

Prescription and non-prescription sunglasses

Your sight care is our priority

Computer Repairs



Windows, MS Office, E-mail,
Internet, Broadband, Security

Solutions resolved remotely
(for those in self-isolation)
or in your own home

One to One tuition.

Phone Shelli of MPM on
01449 770704
07733 262116

Let a local company in Stowupland
support you.

Eastern Frames

Bespoke Framing Service

Greeting Cards & Photo Frames
X-Stitches Stretched & Framed

Fast & Reliable Service

www.EasternFrames.co.uk

Red House Farm,
Station Road
Haughley.

Tel. 01449 675897

Monday – Friday
9.00am – 5.00pm

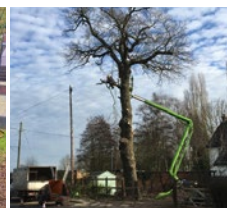
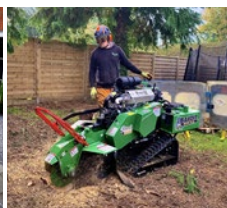
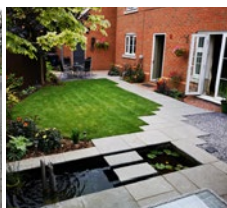
Saturday
9.00am – 12noon



W.Jarvis & Son Tree Services & Landscapes



Scan
me!



**All aspects of tree surgery,
landscaping and fencing undertaken.**

Fully insured, 24hr callout,
council approved contractor
with over 40 years in the industry.

Call for a free estimate & advice

T: 01359 241958

M: 07891 208710 • 07850 046504

Visit our website for information about
our company and the work we do
www.wjarvistreeservices.co.uk



The
United
Reformed
Church

U.R.C CHAPEL

NEWS

Minister: Revd Robert Sheard
Telephone 01449 678173

It is the beginning of a new year and we reassess our commitments and where we are on our faith journey. In this current troubled world, we must just take one day at a time much like it says in the well known song sung by Meriam Bellina,

Our coffee morning in November was well attended and we look forward to the next one on **Friday 23 February 2024. We will be holding a draw at this event.**

Services continue to be held at the URC Chapel, Church Road, Stowupland each Sunday at 10.30am and you are cordially invited to join us in worship. A warm welcome awaits you.

The Speakers for February are as follows:

04 February	Revd Robert Sheard
11 February	Keith Scarff
18 February	TBA
25 February	Nichola Glasse

Joyce Gardiner

MINISTER'S MESSAGE

I Corinthians 13: 4-7

⁴Love is patient and kind; it is not jealous or conceited or proud; ⁵love is not ill-mannered or selfish or irritable; love does not keep a record of wrongs; ⁶love is not happy with evil but is happy with the truth. ⁷Love never gives up; and its faith, hope, and patience never fail.

You could say that February is the month of love with February 14th St. Valentine's Day. But who was the saint who is this day is named after? The history of Valentine's Day and its patron saint is shrouded in mystery; in fact it is thought that it could at least be three men!

St. Valentine's Day, as we know it today, contains a mixture of both Christian and ancient Roman traditions. Today, the Roman Catholic Church recognizes at least three different saints named Valentine, all of whom were martyred, and parts of their bodies seem to be in many different churches around the world.

One legend says that Valentine was a priest who served during the third century in Rome. When Emperor Claudius II decided that single men made better soldiers than those with wives and families, he outlawed marriage for young men, his crop of potential soldiers.

Valentine, realizing the injustice of the decree, defied Claudius and continued to perform marriages for young lovers in secret. When Valentine's actions were discovered, Claudius ordered that he be put to death.

Other stories suggest that Valentine may have been killed for attempting to help Christians escape harsh Roman prisons where they were often beaten and tortured.

According to one legend, Valentine actually sent the first 'valentine' greeting himself. While in prison, it is believed that Valentine fell in love with a young lady who may have been his jailor's daughter, who visited him during his imprisonment. Before his death, it is alleged that he wrote her a letter, which he signed 'From your Valentine,' which is how many cards are still signed today. The truth behind the Valentine legends is murky; the stories certainly emphasize his appeal as a sympathetic, heroic, and even a romantic figure. By the Middle Ages, Valentine was one of the most popular saints in England and France.

However we view the stories of St Valentine, the stories all have the common theme of sacrifice and love running through them. This reminds us of the narrative of Christ's journey to the cross, the love of God to send his Son to be sacrificed for us on the cross. God has intervened throughout human history, and this was the greatest.

As a human race God has given us freewill to do and think what we want, but God is always there guiding and sustaining. God shows this and his love by the sacrifice of his Son, just as St Valentine was prepared to sacrifice himself for the love of others, truly living in the way of Christ.

Yours, Robert

Reverend Robert Sheard Minister of the Stowmarket group of Churches. The group consists of Stowmarket, Debenham, Mendlesham, Haughley & Stowupland)

COFFEE MORNING

Friday 23rd February 2024, Stowupland URC Chapel

10am – 12noon

Coffee, Tea and Cakes

There will also be a raffle draw.

All welcome

HOLY TRINITY CHURCH

NEWS

HOLY TRINITY CHURCH
STOWEILAND

Rector: Revd Paul Clarke Tel. 07903 452010
Churchwardens: Mrs Ann Doubtfire Tel. 770363
Mrs Sue Hayter Tel. 613710
Email: revpaulclarke@me.com



What is a parish church for?

The answer to that depends on whom you ask because, for centuries, your church has stood in your village, serving the local community in very different ways.

We have welcomed babies and adults for baptism, and their names are forever written into our baptism registers. Children have always been an important part of our church life, and our churches in the benefice have been home to groups both on Sundays and during the week. Folks often comment that children are the church of the future, to which I reply that they are the church of *now*. If you have children, however old, you are welcome to join in

We have shared the joy of couples coming for marriage, imagine how much confetti has been thrown on the paths throughout the years! Couples have stood at the chancel steps and made their vows before God. Some come back and join us on a Sunday.

Of course, we have been there for the difficult moments in life, including the final ones, as we conduct funerals both in church and at the local crematorium, and our churchyards are a memorial to the centuries of people we remember. We hold a special service once a year for all those who want to come and give thanks to a loved one who is no longer with us.

We welcome visitors all the time, especially at our seasonal services. This Christmas gone, I shook the hands of hundreds of different people. If this is you, it was great to meet you.

The fact is that the parish church has been at the centre of your village for a long time, and those of us who serve that church are merely custodians of that sacred building, me included. This year, we will be focussing on making our buildings more accessible than ever and being open as much as possible so that you can visit outside of service times as well, for some quiet and maybe a prayer.

It saddens me to know that there are people in our villages who do not think the church is for them. However you choose to use your parish church, just know one thing ... we are here for *everybody* and *you* are welcome.

Rev Paul

Services in February 2024

4th Feb	9.30am	Parish Communion
11th Feb	9.30am	Worship for All
14th Feb	10.30am	Ash Wednesday Benefice Service at Wetherden
18th Feb	9.30am	Morning Worship
20th Feb	09.00pm	Tuesday Compline Service at Wetherden
25th Feb	4.00pm	Evening Service
27th Feb	09.00pm	Tuesday Compline Service at Wetherden

Please note time change of Evening Service.

A PRAYER: God, bless the coming year, and give us in your mercy, time for the task, peace for the pathway, wisdom for the work, and love to the last; for Jesus' sake. Amen

COMPLINE: The ancient office of Compline derives its name from a Latin word meaning 'completion' (completorium). It has its origins in the monastic office as the last service at the end of the day. During Lent we celebrate Compline, this is a quiet contemplative service of about 15 minutes – all are very welcome.

FOOD BANK BOX: If you would like to donate items for the Food Bank to help those in need of a helping hand, there is a box at the back of the church for you to leave your items. The church is open during service times and on the 3rd Saturday morning each month to accept donations. Thank you!

CHURCH HALL HIRE: Please remember that the well-appointed Church Hall is available for hire at reasonable rates and would be ideal for children's parties and small groups/meetings. For more information, please contact Sue Hayter on 01449 613710. Thank you.

COME AND JOIN US FOR

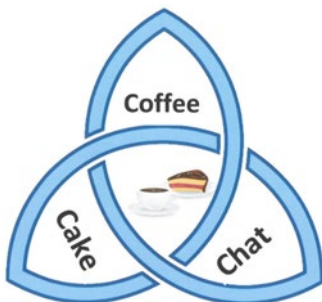
Stowupland Church Hall

Saturday 17th February 2024

10-12

There will be tea/coffee, cakes,
raffle and good company

Everyone is welcome





**24 HOUR LOCKSMITH
BASED IN STOWUPLAND**

*NO CALL OUT FEES
All locks supplied and fitted*

TEL: 01449 673770
(HOME)

TEL: 07525 168895
(24 HOUR)



Email: arron@stowmarketlocksmiths.co.uk
www.a1carpentryandlocksmith.co.uk

*Fed up of running around
after your car?*

Why not give us the inconvenience
– it's part of our service

WE COLLECT & DELIVER

Servicing, Welding,
MOTs arranged
Air-conditioning recharged
General Repairs –
shocks, clutches, brakes etc
All work guaranteed

S & P Meta-care
Est 1990

Contact: Shane
Tel: 01449 771102 or 07802 545737

***Personal Service at
Competitive Rates!***

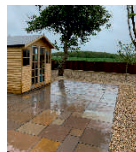


07787 551185
shedbasessuffolk@gmail.com

**Existing shed demolition and site clearance
Garden Office ground preparation
Concrete shed bases
Patis
Driveways
Man & Micro Digger Hire
Fully Insured family business**



Find us on:
Facebook



THE TELSTAR TEAM

Editor - Sarah McManus – 07849 506898 - The editor welcomes contributors. Please send all articles and contents to articles4telstar@hotmail.com or write c/o 4 Oak Apple Drive, Oak Farm Meadow, Stowupland, IP14 4FH.

Business Advertising - Sally Wray - adverts.telstar@hotmail.co.uk - 01449 676612. Businesses with a Stowupland connection can advertise at very reasonable rates.

Diary Dates - Neil Langridge – stowman@stowman.plus.com 01449 616275. To let the village know the date and venue of your event contact Neil to be included in the diary dates.

Distribution Co-Ordinators - Keith and Cathy Welham – 01449 673185. Colin Vickridge and Keith Welham are our proof-readers and Jerry Voden chairs meetings of our team. The entire team are unpaid volunteers.

Telstar is distributed by a team of volunteers who deliver the magazine to over 1,250 homes in Stowupland. The magazine is produced every month, with the exception of December and January, which is a combined copy that gives our trusty team of volunteers a well-earned Christmas break!

Telstar is funded by grants from Stowupland Parish Council and Mid Suffolk District Council as well as income from business advertisers.

From the Telstar Committee

Please note that the opinions expressed in letters and articles are not necessarily those of the Telstar Committee. We cannot be held responsible for the accuracy of material submitted for publication. We reserve the right to include, edit or amend as we think appropriate. Telstar is produced in good faith but errors or omissions may occur during the process of production. If this is the case, please let us know so that errors may be corrected.

Advertising Disclaimer

All adverts are placed in good faith and the publishers cannot be held responsible for any work carried out. Advertisers details are not passed to any other publishers.

Telstar – for the community, by the community.

Deadline Date: 7th February 2024 for March 2024 Edition

Printed by Gipping Press Ltd. Tel: 01449 721599. Web: www.gippingpress.co.uk

Community

BINGO

NIGHT

All Cash Prizes

FRIDAY 23rd February

STOWUPLAND VILLAGE HALL

Doors open 7.00 pm

Eyes down 7.30 pm

Everyone Welcome (over 14's only).

Bring your own drink and nibbles