

**In this issue of Telstar:**

- Parish Council Report *Page 6*
- D-Day Commemoration *Page 29*
- Bus Timetable *Page 45*



**M & M Butchers  
Mark Hammond**

Suppliers of high quality meats, poultry, game and award winning sausages.

**Local Meats \* Home Cooked Pies  
Home Cooked Hams  
Dry Cured Bacon & Gammon  
Selection of Homemade Burgers  
Big Selection of Specialist Cheese**

**Local Delivery**

**Opening Hours**

**Monday & Tuesday 6.30am to 1.00pm**

**Wednesday Thursday Friday 6.30am to 2.00pm**

**Saturday 6.30am to 12.30pm**

**The Green Stowupland Suffolk  
IP14 4AR**

**Telephone: 01449 677720**



# NOTES FROM THE EDITOR

MAY 24

Happy May, and I hope you all enjoyed the easter break, and are looking forward to the May Bank holidays. I'll be spending the Early May Bank Holiday boating on the Norfolk Broads with my granddaughters, which I'm sure will be enjoyable and stressful at the same time.

In this month's edition, we have 2 poems for you to enjoy, our regular amusing contribution from the 'Really Lovely Poetry' and as ever this months does not disappoint, and another to highlight 'No Mow May'. No Mow May is a conservation campaign that encourages people to refrain from mowing their lawns during the month of May. Its in May that many bees emerge from hibernation, and they need flowers for sustenance, so by allowing grass and wildflowers to grow, it provides food for them and acts as a simple but effective impactful way to support pollinators, promote biodiversity and reduce our ecological footprint. So that's our lawn mower put away for the month. On the subject of wildflowers, Brian Ward, in his lovely, regular contribution 'Countryside Ramler,' poses the question about whether the 'Oxlip,' is the flower of Suffolk, so I did some digging, and that's internet digging, not actual digging! I can confirm that the 'Oxlip is indeed the county flower of Suffolk. My research also tells me that they can be confused with cowslips, but to tell them apart, oxlips leaves are rounded whereas cowslips taper, oxlips flowers are a deeper yellow, and don't all face in the same direction. Armed with this knowledge, when out walking with my dog, I have been looking for them, and there are loads around, they often and conveniently grow near the cowslips, so its quite easy to tell them apart.

Also in this month's edition are details of a bus service, providing a half-hourly daytime service on Monday to Saturdays between Stowmarket Town Centre, Cedars Park, and Stowupland. The new services have been supported by HM Government's Bus Service Improvement Plan funding, working in partnership with Suffolk County Council. They will be a welcome service to the village and will complement our existing service provided by Dan's coaches. The new service commenced on 14th April 2024.

Can I remind you all that the next community quiz will take place next month on Friday 14th June. Its popular, so get your team requests in early. After coming second in last months, I'm hoping for great things for my team at the next one. I've always been an optimist!

Community Bingo is as ever last Friday of the month, so next one is Friday 31st May.

# DISTRICT COUNCIL REPORT

APRIL 2024

## **Devolution in Suffolk**

Suffolk County Council commenced a consultation exercise on Devolution (open until 26th May) and, as a consultee to this, the District Council debated this at Council on 20th March. Many points were raised including the value of the deal, the lack of involvement at all levels of government (i.e.: not including parish councils) and the political issues around leadership. Mid Suffolk District Council agreed to submit these and other comments to the consultation.

## **Homelessness strategy**

Mid Suffolk Full Council adopted the new Homelessness and Rough Sleeping strategy 2024 and the associated delivery plan. Together with Babergh the councils want to aspire to go beyond the minimum required provision and hope to provide a bespoke person-centred and proactive service.

## **CIL expenditure framework**

Full Council recommended approval of the amendments proposed to the Community Infrastructure Levy Expenditure Framework following the sixth review. The main changes include allowing applications for District CIL from sports clubs and community shops and cafes with provisos to ensure that any profit made by such businesses goes back to the community and allowing more flexibility for community project costs.

## **Nationally significant infrastructure project - Solar Farm proposal**

A 2000MW solar farm NSIP proposal near Mendlesham has been proposed. This is a large nationally significant energy application which will be determined by the Planning Inspectorate. MSDC are just a consultee, but have requested more clarity about certain aspects of the application.

## **National Grid proposals**

Babergh and Mid Suffolk District Councils have formally objected to National Grid's plans for more electricity pylons between Bramford and Twinstead – saying the impact on the countryside is too great.

The councils also remain concerned about the cumulative impacts with other development within the area, including the proposals for an additional powerline from Norwich to Tilbury, which would also connect to the Bramford substation.

## **Gateway 14**

A planning application has been submitted to Mid Suffolk District Council to construct a 44,000 sq. ft distribution hub at Gateway 14 for a major supplier of eco-friendly construction materials. A separate speculative application is also due to be heard at committee – to enable there to effectively be a pre-approved site for a future occupier.

## Council of the Year Award

The councils of Mid Suffolk, with a Green Party administration, and Babergh, that is Independently led, have just been jointly awarded *Council of the Year* for their collaboration with different partners, working to improve services and focus on communities. This was awarded by the iESE, a not-for-profit organisation created by local authorities as a shared resource to transform public services and retain experience within the sector.

Cllr Rachel Eburne

Rachel.Eburne@midsuffolk.gov.uk

01449 673311

Cllr Janet Pearson

Janet.Pearson@midsuffolk.gov.uk

07928 512592

## Reduce your Accountancy costs

Call Sarah Place Accountants

Professional efficient Accountants with over 15 years experience

Accounts • Book-keeping • Payroll • Sage  
VAT & Tax Returns

01284 747 139



DESIGN • PRINT • LARGE FORMAT  
MAILING • PROMOTIONAL GIFTS • SCANNING

**Gipping Press**  
**are proud to print**  
**this publication**

01449 721599

enquiries@gippingpress.co.uk

[www.gippingpress.co.uk](http://www.gippingpress.co.uk)

# PARISH COUNCIL REPORT

APRIL 2024



*April's meeting opened with 3 members of the public, 7 Councillors and Cllrs Pearson, Eburne and Welham representing the District and County Councils.*

**Councillors' Reports:** The full Councillors' reports can be read elsewhere in Telstar. It was noted that it was disappointing that few people turned up for the meeting between the PC, the School and SCC regarding the Safer Route to School but Cllr Welham asked that the PC suggest some further dates so he can try to get all parties together again. He was asked about there being no new admissions to the 6th Form at Stowupland High School for September 2024. He advised that he was not aware of this, and he would be investigating the reasons. SCC have advised that 6th Form education is available at Ipswich, Bury St Edmunds and Thurston. Councillors felt that the new bus service was too frequent and would be seen as a failure as the uptake for each bus would be very low. Cllr Welham advised that the funding was coming from Central Government and the frequency of the service was devised by First Buses, but he would feedback the concerns. MSDC Cllr Eburne reported that she had been surprised to learn that the proposed new solar farm had not intended to provide a sub station on site and instead had intended to link straight into the proposed Norwich to Tilbury overhead line system which does not have planning permission at this stage. There are still lots of issues at the site by Rosemary Cottage with developers churning up the verges with their vehicles. The site manager has advised that he will be reinstating the verge eventually and he is happy to speak to residents about any issues they have. She advised that Samphire Housing Association are in dialogue directly with their residents about the rubbish issues on Trinity Meadows.

**Matters of Report:** Fence and tree work has been completed on the Retreat Pond but the work on the pond will have to wait until the water level drops. Work has started on the bus shelter. An e-mail has been sent to Bloor Homes regarding the duck signs. All other matters are ongoing.

**Public Forum:** One resident asked whether any progress had been made about the state of the track leading to Chapel Lane and was advised that this was to be discussed later in the meeting. She also felt that the grass had not been cut very well on The Green and cut grass was still being left on headstones in the Cemetery. She was advised that the PC was still waiting to speak to the Contractor about picking up the grass in the Cemetery and the cut on The Green was being affected by the boggy conditions. Another resident queried why the grass had not been cut on the small football pitch and a strip between the main football pitch and the track had also been left. He also asked if the refurbished bus shelter in Thorney Green Road was going to be painted.

**Bin Project:** It was agreed to set a budget to purchase replacement dog bins in Thorney Green Road and on The Green opposite the butchers and for a new litter bin by the bus shelter in Thorney Green Road.

### **Sub-Committee Reports:**

**Allotments** – It was agreed to accept the quote to partition off 3 allotments to make smaller plots.

**Biodiversity & Wildflower Group** – It was agreed to investigate the proposals from the group that the half a mow should not be cut until August or if this is difficult perhaps a compromise could be sought, and the wildflower meadow be cut in September and then for the material to be collected and moved off both sites.

**Environment** – It was agreed to seek quotes to extend the footpath across The Green from Birch Close to the Chip Shop. It was also suggested to initially send a letter to Linden Homes about the lorries visiting their site turning round on the track off Thorney Green Road and to see if they will arrange its reinstatement. The problem with the track at Chapel Lane is difficult because most of the problems being caused are due to delivery drivers turning round, exacerbated by the extremely wet weather. Discussion took place about removing the post and rail fence by the Retreat Pond to be replaced by green metal fencing, but this was rejected in favour of replacing with new post and rail fencing.

**Finance and Policy** – Councillors noted the latest VAT form and the receipts and payments for March/April.

**Footpaths** – It was agreed to accept the quote from SCC of £25,537.68 for the upgrade and widening of footpath 46 to be funded by CIL monies.

**Planning** – There were no planning applications or decisions received this month.

**Trim Trail** – It was agreed to provide funding for the additional costs of the licence fee and to cover the solicitor's fees to complete the licence for the trim trail equipment for Oak Meadow. All money will come from the Trim Trail reserves.

**Councillors' Reports:** Cllr Murton suggested that a letter should be sent to any new residents living around The Green about the policy of no parking on The Green. She also advised that the recent SOAP event was very well attended and she wished to thank all those who helped, Sally for providing the catering and to Twig, Mark and the Social Club for providing the venue.

Cllr Easter advised that the feedback from the recent run round the village was very good and that the litter pick in March was well attended. He also asked about the dates for the meet and greet sessions. Cllr Voden advised that he and Cllr Welham had measured up a further site for another SID device in Church Road and the relevant permission is being sought. If successful, then the 2 devices in Church Road could be operated together but facing in opposite directions.

**Clerk's Report:** The Clerk advised that the entrance from Gipping Road onto phase 2 of Trinity Meadows has now been blocked to stop vehicles accessing the estate from this direction. The transfer of Thradstone Meadow from Bloor to the Parish Council will need initial permission from MSDC but no problems are expected with this. There are some concerns that where Parish Clerks work from home; their addresses are being placed on Parish Council documentation and it was agreed that this would be phased out.

**Correspondence:** This month's correspondence included 2 emails from residents, one regarding the amount of dog mess and litter in Thorney Green Road and the other about the damage being caused to a track off Thorney Green Road by lorries turning round in it. There was also correspondence from Willow Solar Farm advising of amendments submitted to MSDC in respect of the proposed solar farm planning application.

*The meeting closed to the public at 8.28pm. Please note that the next 2 meetings in May and June will be held on the 2nd Thursday of the month at Holy Trinity Church Hall.*

## **STOWUPLAND COLLECTION POINT**

If any individual, school, church or business would like to become a collection point for the Eco Future Group in Stowupland please contact Stowmarket Eco Future Group directly. Contact details can be found in their article.

Please don't leave your recycling on the editor's doorstep as I'm unable to help with this.

*Ed.*

## **JOHN BULL MOTORS LTD**

**Petrol and Diesel  
MOT testing  
Servicing and repairs**

**Unit 7B Charles Ind. Estate  
Stowmarket**

**Phone: 01449 774150**

**Fax: 01449 675898**

**Email:  
Johnbullmotors@btconnect.com**



## CHIMNEY SWEEP

### ECO SWEEP CHIMNEY SERVICES

- NEW POWER SWEEPING METHOD USED FOR A MORE THOROUGH CHIMNEY CLEAN THAN BRUSHES.
- INDUSTRIAL HEPA FILTERED VACUUM.
- FULLY INSURED.
- INSURANCE RECOGNIZED CERTIFICATES ISSUED.
- SPOTLESS, RELIABLE AND FRIENDLY SERVICE.
- ALL CHIMNEYS, WOOD BURNERS, AGA, BOILER FLUES SWEEP.
- GUILD OF MASTER SWEEPS CERTIFICATED MEMBER.



TEL. 01359 232335



## C.M. Hayward

### Electrical Services

Lothlorien, Church Road,  
Stowupland, Stowmarket,  
Suffolk. IP14 4BH

**01449 678213**

## *JJ'S Waste Services*

- All Types Of Rubbish Cleared
- End Of Tenancy
- Garden/Garage
- Office Clearance
- All Types Of Scrap Metal Collected

FULLY LICENCED

Call Us On: **07912 172826**

[www.suffolkwasteremoval.co.uk](http://www.suffolkwasteremoval.co.uk)  
[johnjames1970@icloud.com](mailto:johnjames1970@icloud.com)

LET'S  
GET  
WASTED

# COUNTY COUNCILLOR'S REPORT

MARCH 2024

## **Devolution**

SCC is currently consulting on a devolution deal for Suffolk. The deal proposes that the leader of Suffolk County Council would be directly elected by the people of Suffolk every four years. The first election should take place in May 2025. Consultation documents are available on the SCC website and in local libraries or by emailing [devolution@suffolk.gov.uk](mailto:devolution@suffolk.gov.uk). The results of the consultation will be considered by Council in July 2024. For more information, see <https://www.suffolk.gov.uk/council-and-democracy/devolution> or telephone 0345 603 1842.

## **Energy Developments**

At Council on 21 March, Members debated the impact of the various Nationally Significant Infrastructure Projects (NSIPs) planned for the county and voted that its strategic vision for the county would be to prioritise offshore rather than onshore coordination of schemes, undergrounding of cables rather than pylons, and protection of best quality agricultural land from solar development. NSIP energy projects are approved by the Secretary of State rather than local councils, which only act as statutory consultees. Councils can and do formally object or support proposed projects in the region and East Suffolk have done so with the recent Sea Link proposals affecting Friston and the nearby coast.

## **Libraries Consultation**

On Tuesday 25 March, Cabinet reviewed the results of the recent consultation about the Suffolk library service, which is due to go out to procurement in the summer. Broadly, the members of the public who responded to the survey agreed with what libraries currently provided, including community and digital services, and the mobile library and home library services for people who were housebound. Recent pop-up libraries in village halls did not score highly in the consultation and it is unlikely these will form part of the service in future. It is also likely that mobile libraries will run from smaller vehicles in future. The successful bidder for the new libraries contract is likely to be announced in November, with the new contract starting from June 2025.

## **New Suffolk Business Board**

At Cabinet on Tuesday 25 March the future of the New Anglia Local Enterprise Partnership (LEP) was discussed. Since 2012, government funding for economic growth in the county has been awarded via the New Anglia LEP, but the government has recently ruled that LEPs must now be integrated into county councils. SCC and Norfolk County Council established the New Anglia LEP jointly, but it will be divided between the two. Suffolk County Council will be establishing a new Business Board made up of representatives from local businesses, councils and other

organizations to take over LEP functions such as deciding how future government funding for growth should be used, to undertake mentoring of small businesses and building skills in the workforce. The council has been advertising for local business owners interested to be part of the new Board in the last few months, and the transition from the LEP to the new arrangements is due to be completed in August 2024.

### **Growing Biodiversity**

At Cabinet at the end of February we heard about the council's new responsibilities for planning and Biodiversity Net Gain (BNG). Under the Environment Act 2021, all planning permissions granted in England will have to deliver at least 10% biodiversity net gain (or increase) from April 2024. This means that developers must protect natural habitats or compensate for the loss of it when they build – for example, if a woodland is destroyed by a road, they need to create another one, either onsite or elsewhere, or enhance the natural habitat onsite so that the effect of the development is to increase nature rather than decrease it. This has been introduced to try and combat the biodiversity crisis in the UK; since 1970 UK wildlife species have declined by 19% on average, with near one in six species threatened with extinction. For more information about the new scheme, please see <https://www.gov.uk/guidance/understanding-biodiversity-net-gain>

### **Update on SEND Investment**

Cabinet on 27 February also reviewed the new £4.4m investment in SEND services at the council including how the new funding will be used to increase capacity and recruit to extra roles in the SEND service, particularly around clearing the backlog of Education, Health and Care Plans (EHCPs) and annual reviews. Since the poor SEND inspection report was published, the council has worked with health authority colleagues to create a priority action plan which was submitted to Ofsted/CQC on 7 March. This plan addresses two priority actions from the report (working better together to improve systems and outcomes for children and young people, and to improve quality and timeliness of EHCPs and annual reviews) and three areas for improvement (using performance data and information to plan and commission SEND services, engaging and communicating with children, young people and their families to reduce dissatisfaction, and working with providers of services for social, emotional and mental health and neurodiverse conditions to improve outcomes in these areas for children with SEND).

There has also been a recent announcement that Suffolk County Council is set to receive an additional £10.9million to create new specialist school places for children and young people with special educational needs and disabilities in the county.

You can read the priority action plan here: <https://www.suffolklocaloffer.org.uk/asset-library/suffolk-priority-action-and-improvement-plan-final.pdf>

## **Water Management in Suffolk**

At Scrutiny Committee we heard how, despite the wet winter this year, East Anglia is considered a Serious Water Stressed Area by the Environment Agency. By 2050, the demand will be 2538ML/d (mega litres per day) but the amount available will be only 1700ML/d. This will affect the amount households pay for their supplies, and limit economic growth in the region. Although housing developments are always guaranteed a water supply, this is not the case for commercial/industrial developments. The report included plans to preserve water or generate new supplies, including reducing water company leaks, two new reservoirs in South Lincolnshire and the Cambridgeshire fens, plus a small new reservoir in North Suffolk, and an increase in water transferred around the region. The councillors were very concerned about the likelihood of water becoming scarce in the county in the near future, especially as the public seemed unaware. They talked about how the profile of this issue could be raised to prevent people using too much water. It was noted that Essex and Suffolk Water had already declared a moratorium for new industrial/commercial connections to the supply in the Hartismere area of mid Suffolk.

## **Consultation on Suffolk's next Local Transport Plan (LTP)**

Another Suffolk County Council consultation which has recently been launched is for the next version of the Suffolk Local Transport Plan. The LTP sets out a long-term vision for transport in Suffolk and covers key themes such as decarbonisation of transport, strengthening the local economy, promoting health, wellbeing and social inclusion, and creating better-connected places that encourage a range of transport choices. Many people's travel habits have changed over the past few years and since the Covid pandemic, so it is an excellent time to refresh the plan. Public feedback will help Suffolk County Council to draft something new, which will be subject to further consultation later in the year. Learn more and complete the LTP consultation survey: <https://www.suffolk.gov.uk/ltp4>

## **New EV Funding**

Suffolk County Council has been awarded a £7.3m investment for Electric Vehicle (EV) infrastructure following successful bids to the government's Local Electric Vehicle Infrastructure (LEVI) fund, which supports local authorities to plan and deliver charging infrastructure for residents who do not have off-street parking. Suffolk residents without off-street parking will benefit from £5.9 million to support EV charging, and a further £1.4 million will be used to develop the county's existing EV charging network in community locations.

Suffolk residents are invited to 'nominate' their street for consideration for on-street charging points with this online form: <https://www.smartsurvey.co.uk/s/requestchargepoint/>

## **New Local Bus Service**

A new circular bus service is due to start on 14 April, half-hourly between 7.15 am and 7.00 pm. The route will connect Stowupland (The Retreat) with Mortimer Road, Tesco and the centre of Stowmarket.

## Local highways issues

**Safer Route to School** – The meeting at The Bungalow took place on 25 March, but there were no representatives from SCC and no progress to report.

**A1120 Church Road** - I am waiting to hear back from the SCC floods officer, having reported my concern about the failure of the balancing ponds to attenuate flows from the Trinity Meadows estate. Works to upgrade the culvert under the A1120 are now classed as high priority for improvement works – but probably not before 2026.

**A1120 between Tesco and A14** – This problem is still continuing; although SCC Highways consider this issue to be a high priority and improvement works will be designed and carried out, but probably not before 2026.

**Devon Road** – Maintenance works are proposed between Thorney Green Road and Felix Road. There are no details yet of what is proposed.

## High School – Public Footpaths

Still no progress - I am still waiting for a date for a site meeting with PROW officers and representatives from the High School.

## A14 Resurfacing

Overnight works to resurface the carriageway between Bury St Edmunds and the Woolpit Junction are due to commence on 15 April. 8.00pm to 6.00am, weeknights only.

## Useful websites

**Cost of Living help and advice:** <https://infolink.suffolk.gov.uk/kb5/suffolk/infolink/family.page?familychannel=6>

**Benefits advice and support:** <https://infolink.suffolk.gov.uk/kb5/suffolk/infolink/adult.page?adultchannel=0>

**Flood preparation advice:** <https://www.suffolk.gov.uk/suffolk-fire-and-rescue-service/fire-and-rescue-safety-advice-in-the-community/preparing-for-flooding>

**Flood recovery advice and support:** <http://www.suffolk.gov.uk/about/flood-recovery-information-for-suffolk>

Keith.Welham@suffolk.gov.uk  
01449 673185 or 07831 705 714



**STOWUPLAND  
GOOD NEIGHBOURS**

*A volunteer service run by residents for residents*

Helpline 07591 539 621

# STOWMARKET ECO FUTURE GROUP

<https://stowmarketecofuturegroup.co.uk>

Email: [stowmarketecofuture@gmail.com](mailto:stowmarketecofuture@gmail.com)



**Collection of hard to recycle items** Please take your foil and plastic blister packs to a Superdrug Pharmacy, nearest one is Bury St Edmunds): **A little bit of good news – some packs are now foil on both front and back. These packs can be crunched into a ball (putting them with metal foil containers makes this easier) and put in your recycling bin.**

**2nd Sunday each month (12th May) at Red Gables 2-4 pm plus REPAIR CAFÉ** [stowrepaircafe@gmail.com](mailto:stowrepaircafe@gmail.com) and **4th Thursday each month (23rd May) on Marketplace 9:30 to 11.30 am.** Please be careful to check the day because there are 5 Thursdays this month.

We collect Coffee pods, clean pet food pouches, cheese wrappers and nets, pens, flattened crisp packets, (all count as "soft plastic"), make up packaging and pringles tubes, also clean and flattened tetra packs – see our website for details. **The Dental products scheme has changed – Brushes are fine, but not toothpaste tubes now.** [Terracycle Collections](#) | [Stowmarket Eco Future Group](#)

The accepted target for Net Zero is 2030, a mere 7 years away. Change is much easier if it is tackled in small steps, so during 2024, can you choose one day a week when you will live in as carbon neutral a way as possible? Minimise your use of fossil fuels (petrol/diesel/gas) for driving, heating, cooking etc. Avoid meat and dairy products in your diet. Experiment and see what you can do, make it a time of learning and adapting. Next year – add a second day and so on. Someone who has agreed to do this writes:

*"I have tried this, and it is not easy! It made me realise just how difficult the personal changes we must all make are going to be. On the plus side, I had a very quick shower, my clothes are generally second hand, we ate vegetarian food all day, I didn't use the car. I was out with friends in the evening; four of us shared a car and my friend's car happened to be electric. I did some gardening, and our garden is managed for wildlife. I did a load of washing and appreciated that our electricity is solar powered. The problems were that our water heating is by gas boiler, I was more aware of packaging and food miles as I cooked.*

*We are trying to declutter (it's a retirement thing apparently!!) which involves getting rid of a lot of stuff and I'm aware of how what we "throw away" will stick around somewhere else—often for very many years. Wherever possible I am trying to find new homes for our things so that they have a life elsewhere."*

Some would say that the above actions are pointless. They feel sad, angry, frightened, or hopeless about the climate situation. The Eco group often feel these things too but gain hope and energy by talking to, learning from, and encouraging each other. We find out all the good stuff going on and build friendships which is much better than worrying about things on our own. It's not "activism," it is "enabling" ordinary people to do what's needed. So, we are going to start holding "**eco cafes**" to give everyone a chance to benefit from these conversations. **Come and join us on Friday 10th May at 1:30pm. We will meet in Osier café in St Peter and St Mary's Parish Church and look forward to meeting you.**

## Rushbrook's

— CHIMNEY SWEEP —

'Guild of Master Chimney Sweeps' registered Chimney Sweep, providing professional service to ensure your chimney is clean and safe for your home.

Services include:

- Open fire, wood burners and Inglenooks swept
- Stoves checked and serviced for efficiency
- Birds nest removal
- Safety Inspections and Smoke Tests
- All work fully insured & certificates issued.

Contact Robert Rushbrook

Email: [rushbrookschimneysweep@hotmail.com](mailto:rushbrookschimneysweep@hotmail.com)

Telephone: 07581 352772 or 01449 612296



Orchard Garage DMS Ltd was previously run from Church Road, Stowupland.

We moved to Middlewood Green as a Limited Company in 2018. We have over 20 years of technical experience. Our goal is to deliver outstanding customer service to repair, service and MOT all makes and models to the highest possible standard at very competitive prices. We also can supply and fit tyres at very competitive price.

We look forward to welcoming you to Orchard Garage, please ring for a quotation or to book an appointment.

**Telephone** – 01449 711436

**Email** – [Orchardgaragedms@outlook.com](mailto:Orchardgaragedms@outlook.com)

**Address** – Orchard Garage DMS Ltd,  
White House Farm, Middlewood Green,  
Stowmarket, Suffolk, IP14 5HE

# COUNTRYSIDE RAMBLER

BRIAN WARD

I love this time of year; everything is fresh and green. I will often watch a particular tree that I see daily just to see the small leaf bud form and over a period of weeks watch it swell and then suddenly unfold to develop into a mature leaf. The two best trees in particular to study are the Horse Chestnut, with its "sticky buds" as I call them, and the Maple; both of these trees have quite substantial leaves so are easy to observe for dramatic effect.

Nature has always fascinated me and you are always seeing new things; for example I recently witnessed at Carlton Marshes a few weeks ago, as I sat in my vehicle watching goldfinches in a nearby cherry plum bush of which was in full blossom, I noticed the goldfinches were pecking the blossom and pulling off a few petals from each individual flower. Then, to my surprise, they would dip the tip of their beak into the centre of the flower to extract a tiny amount of nectar. It was not an individual bird doing this but a whole flock and at times they would even bicker amongst themselves to get the best branches of blossom. I do not know if this has been documented before, but I have not seen it in all my years of birdwatching.

Last month I mentioned the adders at Minsmere. One of my granddaughters noted this; so, knowing she had never seen a wild adder, we set off with expectation of seeing some. Arriving at Minsmere visitor centre, I enquired if the adders were showing. The warden replied, 'Yes, the observers have one in their scope at the moment.' One excited grandad and granddaughter hurried the few hundred yards to the site where several people had gathered to witness Britain's only venomous snake. There was only one snake showing, as it was a cool day, but what a snake it was - totally black [melanistic] form which was devoid of pattern but a stunning snake to see quite in the open basking in what little sunshine we had that day. There was a baby grass snake nearby, but we missed it as it slithered into the undergrowth.





We listened to the two wardens on duty as they unfolded the life of adders with fascinating facts I will not divulge here. If you wish to find out more, visit the site and engage with the wardens and they will reveal the life of an adder.

With the very wet spring some sugar beet crops have not yet been harvested. Last year's potato crops were hit, resulting in poor results and rotten tubers. The wet weather suited some of our wildflowers though, with ditch banks full of primroses and cowslips. I have noticed some oxlip amongst them as well. I may have heard it somewhere, but I believe the oxlip is the flower of Suffolk; I may be wrong but no doubt some will enlighten me.

If I am in a hide, I like to strike up quiet conversation with the nearby occupant. It is fascinating how many people live locally, but some have travelled hundreds of miles and are eager to gain local knowledge. Over the years I have met presenters from Springwatch. Welsh wildlife filmmakers and so many interesting people that all have one thing in common: their love and fascination with nature.

Enjoy the spring weather and happy walking with family or friends.



**Arrow Taxi Services**  
"We'll get you there"

**Weddings**  
**Airports**  
**Race Meets**  
**Contract Work**  
**4 to 8 passengers**  
**01449 677677**  
**arrowtaxiservices**  
**@btinternet.com**



**Stowupland based**  
**Carpenter and Handyman.**  
**No job too small.**  
**07940184002**  
**ajp\_services@outlook.com**

# RAMBLINGS FROM THE POTTING SHED

PAULA WILLMOT

Like many of you, I hope we are at last sitting in our gardens enjoying a bit of warmth. As I write, 40 mph winds are battering my tulips and daffs to such an extent, I suspect I will need to go and cut them to save them! Storm Kathryn is certainly making her presence felt, especially if you have been brave enough to put up bean or pea canes. However, we should be fast approaching gardening abundance as the bulbs give way to hanging baskets and patio plants and our early crops start to provide us with fruit and veg. I hope you have all planted your free sunflowers from last months Telstar? It's not too late to get them in and ensure Stowupland is awash with gorgeous yellow flowers.

This month jobs tend to be focused around the changeover of planting and the move from bulbs to perennials as well as establishing new and existing plants in our borders. May will see me tackling the following:

- Make sure bird boxes and bee hotels are now left undisturbed as nature's creatures start house hunting and establishing new homes.
- Ensure any new 'tender' purchases from garden centres, particularly those from the bigger DIY outlets, are hardy enough to go outside. If not, just hang onto them indoors and take out on warmer days to harden off.
- Peonies and dahlias will now start showing their stronger shoots so it's time to put canes or more structured supports in place as they fill out. You can also do this with hollyhocks and delphiniums if you have planted the taller varieties.
- Tomato growbags will be flying off the shelves so ensure you have enough if you have decided not to grow in pots or in the borders.
- Hardy veg can now go outdoors in successional sowings, especially lettuces and radish ensuring tasty crops throughout the summer.
- Any bulbs that have gone over should be left until the green stems wither away. The stems will absorb sunlight and feed next year's bulbs for even better flowers. It is tempting to want to clear beds but try and resist!
- Rotate compost. Its time to turn the contents before layering throughout summer with grass cuttings and leaves.

This month's interesting project is courtesy of @seed.2.flowers and @gardenpro.tips. Using an old water bottle top, use it as protection for a small plant spiral.

It will need a bit of careful measuring, but instead of a noisy wind chime, this spiral of plants will spin in the slightest breeze as per the photo. Pots of small plants or succulents staggered under the water bottle create a really beautiful garden sculpture if you are short on space or are looking for a feature.



This month's feature local garden centre is Sturmer Nursery just the other side of Stoke by Clare. I have been going there for 30 years, but this year the nursery has really grown in size and also has a café. Great value plants with lots of unusual varieties. They are also very good for stones and chippings in many colours and sizes, often not found elsewhere.



The National Open Gardens Scheme has just published its county guides, but if you are unable to get a copy, try [ngs.org.uk](http://ngs.org.uk). Last year the scheme donated over 3 million pounds to nursing and health charities. There is so much on offer in our county this year, it's well worth a look.

Finally, May will see me attending this year's Chelsea Flower Show. I will make sure I take lots of images and will publish the highlights next month. As usual, there will be daily broadcasts on BBC2 so everyone can see the gold medal winners and first time show gardens as well as following our favourite gardeners as they meet the growers. Chelsea is as much about innovation as it is about the gardens themselves so I shall be looking for new ideas and tips and tricks to share when I get back.

My visit to Perfect Perennials was marvellous and Darren has done himself proud with this year's offerings, from gorgeous speckled peonies to unusual irises and poppies. Do go along if you have time to support our little local business. As you can see from the photo, my car was completely full after my last visit!



That's all for this month as its now time to go and rescue some tulips from the wind...which hopefully will be a dim and distant memory by the time you read this! Happy gardening!

# Gidney

Plumbing & Heating Ltd

07534 525 263

01449 258 254

**Professional & Reliable Service**



**Plumbing  
Bathrooms  
Heating  
Boilers  
Servicing  
Underfloor Heating  
Tiling  
New builds  
Renovations**

[enquiries@plumbinginsuffolk.com](mailto:enquiries@plumbinginsuffolk.com)

[www.plumbinginsuffolk.com](http://www.plumbinginsuffolk.com)

# Andrew Bingham

INDEPENDENT FUNERAL SERVICE

*Stowmarkets Independent Family Funeral Service*

24 Hour Personal Service • Private Chapel of Rest • FREE Parking



Telephone: **01449 771666**

[www.andrewbingham.co.uk](http://www.andrewbingham.co.uk)



The Nutshell, Milton Road South, Stowmarket, Suffolk IP14 1EZ

Golden Charter  
Funeral Plans

# AVC

Architectural  
Consultant



07818 417 964

[office@avcarchitectural.co.uk](mailto:office@avcarchitectural.co.uk)

Planning - Building Regs - Structural

**You could advertise your  
business here for only:**

**Quarter page** £11 per month

**Half page** £22 per month

**Whole page** £44 per month

**Whole back page *black and  
white*** £66 per month

**Whole back page *colour***  
£120 per month

Please contact:  
Sally Wray by email  
[adverts.telstar@hotmail.co.uk](mailto:adverts.telstar@hotmail.co.uk)

**I recently started a new job where my boss has told me I'll have to work on bank holidays. This was never the case in my old job. Can my employer really make me work on a public holiday, and should I get paid extra if I do?**



Unfortunately, when it comes to bank holidays, whether staff have to work is up to their employer, and you don't have to be paid more if you do. The situation will vary from job to job and may depend on several factors such as whether your place of work is open on bank holidays, your hours of work and crucially, what your contract says.

Look at your contract, if you have one, to find out what your personal situation is. Your contract might say you will always get bank holidays off, but it might say you may sometimes be required to work them or will always be required to work. But if your contract says you get bank holidays off you shouldn't be asked to work.

Your contract might say something like: "In addition to bank and public holidays, your annual entitlement to holidays is X days." This means you get public holidays off in addition to your annual leave entitlement, but it might not mean you're entitled to take the specific days off. You may be required to work a bank holiday, in which case you should get another day off instead.

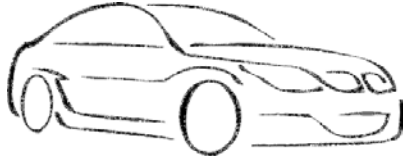
Alternatively, it might say something like: "Your annual holiday entitlement (inclusive of bank and public holidays) is X days" - this means you have to take bank holidays off as part of your annual leave entitlement. Bank holidays will either be deducted from your annual leave allowance (so you'll have to book all bank holidays as paid time off) or counted as additional holiday days.

A common misunderstanding around bank holidays is that employers have to pay you extra for working them. This is not the case. Unless your contract says you'll be paid extra you will just be paid your normal amount. If your contract says you are entitled to bank holidays but you're asked to work, you should be able to take a different day off in lieu. Your employer must follow what's set out in your contract. If they don't, you should raise this with them.

If you don't have a contract, the legal default position is that your employer can tell you when you can or can't take time off. If you'd like to request a bank holiday off, use the normal method for requesting time off.

If you find you need to resolve an issue with your employer, first ask for an informal chat, where you can raise your concerns. If this doesn't get you anywhere, you may need to raise a formal grievance. If you need advice on this, contact Citizens Advice Mid Suffolk.

Citizens Advice Mid Suffolk can provide in depth advice on this issue and much more, including debt, finances, employment, benefits and family/relationships. You can contact them by phone on 01449 676060, visit in person at Milton House, 5 Milton Road South, Stowmarket IP14 1EZ or use the contact form at [midsuffolkcab.org.uk/contact-us](https://midsuffolkcab.org.uk/contact-us). Opening hours are Monday-Thursday 9.30am – 3.30pm and Friday 9.30am – 12.30pm.



# FAST TEST STOWMARKET

SERVICING ~ MOT ~ DIAGNOSTICS ~ WELDING ~ A/C  
TYRE FITTING ~ WHEEL ALIGNMENT

- Main dealer quality of service at local garage prices
- Specialist dealer level software for BMW, Mini & Volkswagen Audi group
- Service, repairs & welding to most makes & models of car & light commercial vehicle
- All maintenance & servicing undertaken without affecting the manufacturer's warranty
- Diagnostic equipment for most makes & models of vehicles
- Friendly & helpful advice always on hand



01449 770902



[info@fastteststowmarket.co.uk](mailto:info@fastteststowmarket.co.uk)

Unit 4, Tomo Business Park, Tomo Road, Stowmarket, IP14 5EP

[www.fastteststowmarket.com](http://www.fastteststowmarket.com)

# NO MOW MAY POEM - THE COUNTRY BUMPKIN

No Mow May for your garden,  
Longer grass if you can pardon,  
Dandelion, buttercup and a daisy,  
It's not that bad, it's not that crazy.

Take a moment, have a rest,  
Next month have it at its best.

Does it need to be bowling green flat?  
Two centimetres tall, no harm in that.  
Then buttercup heads will fill the green,  
The most glorious sight to be seen.

But some people want it said,  
"They are but weeds, off with their heads!"

The insects will have nowt to eat,  
No food of nectar, sticky, sweet.

"No Mow May" we hear you call,  
It's only one month after all.



*The Country Bumpkin*

**A1**   
**Locksmiths**

---

**24 HOUR LOCKSMITH  
BASED IN STOWUPLAND**  
*NO CALL OUT FEES*  
*All locks supplied and fitted*

**TEL: 01449 673770**  
(HOME)  
**TEL: 07525 168895**  
(24 HOUR)



Email: [arron@stowmarketlocksmiths.co.uk](mailto:arron@stowmarketlocksmiths.co.uk)  
[www.a1carpentryandlocksmith.co.uk](http://www.a1carpentryandlocksmith.co.uk)

*Fed up of running around  
after your car?*

Why not give us the inconvenience  
– it's part of our service

**WE COLLECT & DELIVER**

Servicing, Welding,  
MOTs arranged  
Air-conditioning recharged  
General Repairs –  
shocks, clutches, brakes etc  
All work guaranteed

**S & P Meta-care**  
Est 1990

Contact: Shane  
Tel: 01449 771102 or 07802 545737

***Personal Service at  
Competitive Rates!***



# IMPORTANT CONTACTS

## **Citizens Advice**

[www.midsuffolkcab.org.uk](http://www.midsuffolkcab.org.uk) - 01449 676060  
or 01449 676280 - 5 Milton Road South,  
Stowmarket, IP14 1EZ

## **Doctor**

Emergency - 999  
NHS Direct - 111  
Combs Ford - 01449 678333  
Stowhealth - 01449 776000

## **Emergency Numbers**

Power Cut - 0800 31 63 105  
Gas Leak - 0800 111 999  
Water Leak - 0800 771 881

## **Good Neighbour Scheme**

HELPLINE: 07591 539621

## **Member of Parliament**

Jo Churchill - [jo.churchill.mp@parliament.uk](mailto:jo.churchill.mp@parliament.uk) -  
Constituency Office, 10 Hatter Street,  
Bury St Edmunds, IP33 1LZ - 01284 752311  
House of Commons - 02072 198487  
<https://www.jochurchill.org.uk/>

## **Mid Suffolk District Council**

[www.midsuffolk.gov.uk](http://www.midsuffolk.gov.uk)

Janet Pearson - [janet.pearson@midsuffolk.gov.uk](mailto:janet.pearson@midsuffolk.gov.uk)  
07928 512592

## **Police**

<http://www.suffolk.police.uk/contact-us>  
<https://www.suffolk.police.uk/advice>

## **Samaritans** – 116 123

## **Stowupland Village Website**

[www.stowupland.com](http://www.stowupland.com)

## **Parish Council Website**

[www.stowupland.suffolk.cloud](http://www.stowupland.suffolk.cloud)

## **Suffolk County Council**

[www.suffolk.gov.uk](http://www.suffolk.gov.uk) 01449 673185  
Keith Welham - [Keith.Welham@suffolk.gov.uk](mailto:Keith.Welham@suffolk.gov.uk)  
SCC - General Contact No. 0345 606 6067

## **Schools**

Stowupland High School -  
[www.stowuplandhighschool.co.uk](http://www.stowuplandhighschool.co.uk) - 01449 674827  
Freeman Community Primary School -  
[www.freeman.suffolk.sch.uk](http://www.freeman.suffolk.sch.uk) - 01449 612067

## **Vets**

Cedarwood - 01449 676966  
Stowe Vets - 01449 613130

# DIARY DATES

If you know of any events happening in the village I may not have picked up on please do get in touch by 7th of the month at [stowman@stowman.plus.com](mailto:stowman@stowman.plus.com) or on 01449 616275.

## MAY

WED 1	14:00-16:00 Village Hall car pk.	Mobile Post Office
WED 1	14:30 various locations	Book Group (contact 01449 672127 for details)
WED 1	19:30 Village Hall	Local History Group – “Parish Fire Engines”
THURS 2	14:00-16:00 Village Hall car pk.	Choose Refills mobile shop
THURS 2	19:00 Village Hall	Short mat bowls
SAT 4	09:30 - 13:00 Village Hall	Heart of Suffolk Farmers Market
MON 6	18:30 Village Hall	“Tappy Feet” Tap dance class
WED 8	14:00-16:00 Village Hall Car Pk.	Mobile Post Office
THURS 9	19:00 Village Hall	Short mat bowls
THURS 9	19:30 Parish Church hall	Parish Council meeting
SUN 12	19:30 Village Hall	Country & Western music club
MON 13	18:30 Village Hall	“Tappy Feet” Tap dance class
MON 13	19:30 Village Hall	Village Hall trustees meeting
MON 13	19:30 URC meeting room	Biodiversity group
TUES 14	09:30 Jubilee Crt. 09.55 Green	Mobile Library
WED 15	14:00-16:00 Village Hall Car Pk.	Mobile Post Office
THURS 16	19:00 Village Hall	Short mat bowls
SAT 18	10:00 - 12:00 Church Hall	Coffee, Cake and Chat
SUN 19	19:30 Village Hall	Country & Western music club
MON 20	18:30 Village Hall	“Tappy Feet” Tap dance class
WED 22	14:00-16:00 Village Hall Car Pk.	Mobile Post Office

THURS 23	19:00 Village Hall	Short mat bowls
SUN 26	19:30 Village Hall	Country & Western music club
MON 27	18:30 Village Hall	"Tappy Feet" Tap dance class
WED 29	14:00-16:00 Village Hall Car Pk.	Mobile Post Office
THURS 30	19:00 Village Hall	Short mat bowls
FRI 31	10:00 URC chapel	Coffee Morning
FRI 31	19:30 Village Hall	Community Bingo

**LOOKING AHEAD**

**JUNE**

SAT 1	09:30 - 13:00 Village Hall	Heart of Suffolk Farmers Market
SAT 8/SUN 9	5-a-side football tournament	
SAT 15	10:00 - 12:00 meet Village Hall	Community Litter Pick
SAT 15/SUN16	Holy Trinity Church	Flower Festival
SUN 30	Various locations	Open Gardens Day

**SEPT**

SUN 8	The Walker Cup	
-------	----------------	--

**VILLAGE WALK**

**Please join Jane and Dan for a village walk, hopefully around the fields, on Monday, May 6th at 10.30 - followed by refreshments.**

The walk will leave from "Crowstone" drive (two doors away from the Co-op garage) at 10.30 and will last about an hour. If you are unable to walk, please come to the house to socialise and meet others from the village. Refreshments will be served from 11.00 onwards.

*Donations for Christian Aid will be gratefully received.*



Rachel Eburne - rachel.eburne@midsex.suffolk.gov.uk -  
01449 673311

MSDC General Contact No. 0300 12340000

**Mobile Library** - 07721 879855

### **Parish Council**

Donna Bridges - Chairman - 07736 348335  
donnabridges@stowuplandpc.co.uk

Terry Easter - 07958906176

Terry.easter@stowuplandpc.co.uk

Laura Beeson - 07918 808387

laurabeeson@stowuplandpc.co.uk

Laura Johnson - 07826 851030

laurajohnson@stowuplandpc.co.uk

Debra Melhuish - 07979125904

debramelhuish@stowuplandpc.co.uk

Paula Murton - 07906 677817

paulamurton@stowuplandpc.co.uk

Ray Studd - 01449 676606

raystudd@stowuplandpc.co.uk

Jerry Voden - 01449 703717

jerryvoden@stowuplandpc.co.uk

Clerk to the Parish Council - Claire Pizzev

parishclerk@stowuplandpc.co.uk - 01449 677005

2 Broomspath Road, IP14 4DB

*Parish Council Minutes of meetings and agendas*

*are available on the Parish Council Website*

*www.stowupland.suffolk.cloud*

### **Village Hall Bookings**

Lisa Tunbridge - Phone - 07862740830  
stowuplandvillagehallbookings@gmail.com

### **Village Clubs**

Book Group - Patricia Hodgkins - 01449 672127

Stowupland Bowls Club - Graham Newman - 01359  
240846

Community Events - Keith Welham - 01449 673185

Country and Western - Pat Murphy - 01449 677405

Local History Group - Jerry Voden - 07951 086383

Short Mat Bowls - Pam Fayers - 07713026696

Sports and Social Club - Mark Dye - 07799 662491

Stowupland Cricket Club

www.stowuplandcricketclub.co.uk/

Stowupland Falcons Football Club -

stowuplandfalconsfc.co.uk

Stowupland Sports Centre -

info@stowuplandssportscentre.co.uk - 01449 672531

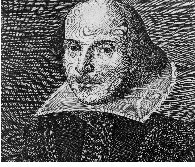
Stowupland Wildflower & Biodiversity Group -

Keith Welham - 01449 673185

Stowmarket Wildlife Group - Heather Salmon

-heathersalmon50@gmail.com - 07722 871205

# MUCH TO DO ABOUT EVERYTHING



People sometimes tell us,  
That school days were just great.  
You studied William Shakespeare,  
Some love, but others hate.

You may have liked your Shakespeare,  
And know the plays he wrote.  
But do you know the background?  
And remember parts to quote.



A well-known play the young Bill penned,  
Was not 'bout sis or brother.  
Was Romeo and Juliet,  
How did they know each other?  
(Well)

'Twas in a restaurant, they met,  
Romeo and Juliet.  
He had no means to pay the debt,  
So Romeowed what Juliate.

(An indulgence)  
Go to Stratford's theatres,  
Bill's plays, they put them on.  
Enjoy him, on and off the stage,  
With a drink at the old Black Swan.



(Dirty Duck)  
He must have spent time overseas,  
He must have travelled far.  
It helped him write his "Hamlet",  
And name a small cigar.



He must have done some research,  
To build on things he'd hear.  
Venice and Verona,  
King Richard and King Lear.  
It wasn't just the plays he'd scribe,  
Some poems he would sell.  
His plays received some bad reviews,  
But, All's Well that Ends Well.

*From The Really Lovely Poetry Company R.R.G.*

# D-DAY COMMEMORATIONS

**Stowupland Parish Council** will be taking part in the International Tribute alongside the lighting of the Parish Beacon on Thursday 6th June 2024 at 9.15pm. To pay "tribute" to all those that paid the ultimate sacrifice on D-Day and throughout WWII as a whole, while fighting for the freedom we all enjoy today.



## THE TRIBUTE

Let us remember those who gave their lives at home and abroad during the D-Day landings, whose sacrifice enables us all to enjoy the peace and freedom we have today.

Let us remember those who came home wounded, physically and mentally, and the friends and family who cared for them.

Let us remember those who returned to restore their relationships and rebuild their working lives after years of conflict and turmoil.

Let us remember the families that lost husbands, wives, sons, daughters and sweethearts.

Let us remember the servicemen and women and merchant seafarers of all nationalities - from all countries - who fought, suffered and died during the D-Day landings and six years of war.

Let us all remember those in the Royal Navy, Army, Royal Air Force, Merchant Navy, and our Allies - the brave people who kept us safe on the home front and abroad and those in reserved occupations during the difficult time of war.

Let us remember the brave doctors and nurses who cared for the wounded, the men and women who toiled in the fields, the coal mines, the factories and the air raid wardens, police officers, firemen, ambulance drivers and the young people of the Scouts and Guides who all played such a vital role in the war.

*More details to follow in the June Telstar*



WELLNESS BY

# *British Beauty Salon*

UPSTAIRS IN THE CROWN, STOWUPLAND,  
IP14 4RN

## *The Luxury Pedicure*

**OFFER OF THE MONTH**

**Usually £47.00**

**For May £40.00**

Relax into our Biarritz Pedi chair and immerse your feet in the bubbling warm water. Including nail file, cuticle work and most importantly massage all while you relax your feet into their own jacuzzi in our Pedi spa chair! This treatment includes full nail prep, foot file, exfoliator, polish & spritz to give you a facial for your feet!



07301246223

@britishbeautysuffolk\_

info@british-beauty.co.uk

www.british-beauty.co.uk

## Farewell Message from Mr Pettitt

It has been a privilege to be part of the Freeman community for the last 10 years, as Headteacher of our wonderful school.

When I joined in January 2014 it was a time of change for all at Freeman. The school nursery was in the process of being closed, and the School Organisation Review was closing middle schools requiring Freeman to become an all-through primary school. Despite the uncertainty and rationale for these changes (outside of school control) I felt the support from staff, governors, parents and carers, which allowed the transition to be implemented successfully and smoothly.

Of course, I'll miss the class and festive assemblies, the performances, residential trips and the wider enrichment activities, but what I'll miss most of all are the normal days when you walk from classroom to classroom, and you see something fantastic is happening – learning! Children learning to socialise, to read, to write, to do maths and so much more. I feel remarkably proud and extremely honoured to have seen many cohorts of children move all the way through our school from Reception to Year 6 and, for me, seeing the progress the children make over that seven-year period is what makes it all worthwhile.

Another thing that will stick with me as I leave to my next headship, are the numerous comments we receive from visitors to the school, who comment on the children's positive behaviour and attitude. Many of these visitors go into other schools, and although we have high expectations of our children, it is nice to hear these lovely comments. The children at Freeman really do embody our CARING values, and every Friday it makes me so proud when we celebrate the achievements of our children, CARING values, Big Bees and wider achievements. I can say with complete honesty that Freeman children are the best. They make me extremely proud, and I know they will all go on to do great things in later life.

I've been very fortunate to work alongside so many amazing people in our school over the last 10 years – teachers, support staff, governors and Friends of Freeman – who have all shared my ambition of continually providing the very best opportunities for all our children. I'd like to put on record my thanks to all colleagues and members of the governing body, both past and present, as the success of our school has always been a team effort. The relationship between home and school has been one that I've tried consistently to nurture and I'd also like to express my gratitude to parents, carers and other family members for all the support they have provided both for their children and for our school throughout the years.



Together as a community we have achieved many great things. We have been through two lockdowns during the pandemic, and we have an amazing school that prepares children well for the next step in their education as they move to high school. I am often told how well our former pupils are doing at high school. Another memory that will make me feel proud of my time at Freeman.

The links with the local community – church, care homes and Parish Council – have been very important to me and I want to convey my appreciation to everyone connected with the aforementioned organisations.

To all the Freeman parents and carers, I cannot thank you enough, without hesitation you took me in and made me feel welcome from the start. Knowing how difficult change can be, you have made the experience at Freeman a joy. You have engaged and voiced your opinions, shared your concerns and worries, and I hope that you have found that I have taken the time to listen and take on board what you have said. I will never say I get everything right all the time, but I do strive to do my very best.

Although I am sad to be leaving, I am excited about the future, and the next chapter. I wish the Freeman family all the best, I will miss you all.

*Yours sincerely, Daniel Pettitt*  
Headteacher

## World Book Day

As part of our World Book Day events, children took part in a Reading Bingo Challenge completing 8 reading activities. Winners from each class received a £5 Scholastic book voucher to spend at the Book Fair.

Children and staff were invited to come to school dressed as their favourite book character and worked in small groups within their houses recreating scenes from some famous Julia Donaldson books.



## Rights Respecting School

The Rights Respecting School Steering Group is made up of pupils and staff. They meet regularly to discuss how we can foster rights-respecting values in our school. They will also help lead the school to achieve the Rights Respecting School Bronze Award Status by the end of the summer term.



## Forest Schools

Year 5 have continued to enjoy their Forest School sessions. They recently tracked the prints of a muntjac and built a range of rope swings. Tools were used and the children's dens were improved with extra furnishings!



Children also took part in a litter pick last week!

## Sustrans Big Walk and Wheel 2024

Children at Freeman recently took part in the national challenge to encourage pupils to make active journeys to school and to improve air quality in their local neighbourhood. 2,260 schools in the UK registered with 728,074 pupils taking part. Over the course of 10 days, we logged how pupils travelled to school and submitted the numbers online daily.



Overall, Freeman was ranked within the top 10% of the Small Primary section coming 42/450 with a daily average score of 81.38% of children walking, cycling, scooting or parking and striding to school. A fantastic achievement!

Children and their families also had the opportunity to take part in a *Family Travel Trail* and prizes were awarded in each year group.

The Junior Road Safety Officers also helped to organise a Bike Check after school, which proved to be very popular!



***From tiny acorns do mighty oaks grow***



**LUCAS & WYLLYS**  
SOLICITORS  
Established for 194 years & counting



reviewsolicitors  
TRUSTED LAW FIRM



"EXCELLENT"

Quote 'TELSTAR' to  
receive 10% off Wills

**Wills**  
from £175 plus VAT

**Grant of Probate**  
from £700 plus VAT

**Lasting Powers of Attorney**  
from £350 plus VAT (single)  
Save 10% when purchased with a Will

Contact Serena in Stowmarket to book your **free** local home appointment.

enquiries@lucasandwyllys.co.uk  
**01493 855555**  
www.lucasandwyllys.co.uk





National Paralegal Awards  
2023  
**WINNER**  
Best Will Writing Paralegal  
Serena Ely  
[www.nationalparalegalawards.com](http://www.nationalparalegalawards.com)



**BLUE LIGHT CARD**. 10% off our fixed fees



# LOCAL HISTORY GROUP

Hopefully, you will join us on Wednesday May 1st for Geoff Robinson's talk **on Parish Fire Engines & their Development.** (Village Hall @ 7:30).

If you are reading your Telstar after the 1st, then our next meeting will be June 5th when we will have a presentation and display using material from our archives. Given the date of this meeting we would like to have focused on how Stowupland was affected by D-Day, but we can't as we know nothing, instead we will focus on Stowupland in the 1930s and 40's. (Unless anyone can share family memories of D-Day!)



Below you can get a taste of Sarah Doig's March talk about Suffolk Churches. Unfortunately, I could not be there, but I understand from Jerry that it was very interesting (although apparently few demons turned up), but it was not easy to make notes on her talk as you really needed to see the photos in her presentation.

Our archives tell us of various fires that have destroyed properties in Stowupland, but Neil has been able to find out some interesting details about the 19th century fire service.

## 1844 fires in Stowupland

During the incendiary outbreak of 1844 many fires were started under cover of the night in the Stowmarket area, as a form of rural protests against the working conditions of agricultural labourers. Stowmarket fire brigade were kept busy in the nearby villages.

An account book kept by the brigade at the time lists the expenses of each call out. Three fires in Stowupland are detailed: one at the Tithe Farm (Now The Uplands) where a barn and cottage were destroyed and two at Columbine Hall Farm. The expenses for these last two fires were as follows.

### Expenses occasioned by the fires at Mr Bobby's

May 27th	Horses for the engine & post lads £1:16. Distributed to men who assisted out all night £18:17:6
June 25th	Horses etc. for the engines £1:16. Distributed to men. £16:4. Suppers for the engine men being very wet £3. Frewer etc £15
June 30th	Recd. From the Fire office £8. Aug 9th ditto £17:1. Balance due £17:7

The horses would have been hired from The Fox Hotel along with the post boys who would ride on the horses drawing the engines. The Fox also provided the suppers for the firemen. The large amount paid to those who assisted indicate that over a hundred must have turned up to help as they would have only got a couple of shillings each. Frewer was the brigade captain. The whole operation was very expensive, but the service of the fire engine didn't come free, the tenant of the property was expected to recompense the brigade for the expense, fortunately Mr. Boby seems to have been insured.

As you will see from the next item from Neil. In 1854 another fire caused severe damage to Bramford Farm in Mill Street:

### **Bramford Farm**

About halfway along Mill Street lies Bramford Farm, the property was at one time owned by Bramford parish who bought it with a legacy left by John Acton of that parish. The deeds and other papers relating to the property were kept with Bramford parish papers and are now in the Suffolk Archive, Ipswich.

These documents stretch back to a time before it came into the hands of Bramford. The first reference to the farm was in 1615 when John Sowgate (Southgate) of Ringshall left *His free tenement in Stowupland* to his son William. An entry in a rental of Thorney Hall manor in 1618 shows one entry for land held by a William Sowgate as follows –

*William Sowgate holds free 5 pieces of land and meadow and pasture lying in Thorney called Lyvermere containing by estimation 11 acres more or less by rent 3s 8d.*

This description matches a later plan of Bramford Farm as being 5 fields of approximately that acreage so the earlier name for the farm we see was Lyvermere.

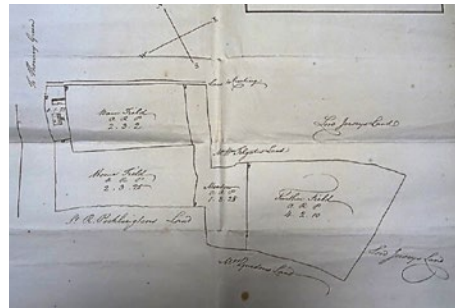
William seems to have left the farm equally to his children William, Thomas, Peter and Helen as they sold it to a William Southgate the younger of Combs for £160 in 1652. It is likely the house and land were not occupied by the Southgates but rented out, as in 1660 in the will of William Sowgate of Combs yeoman it is said to be lately in the occupation of John Taylor and Robert Thurmwood. In 1699 the property was mortgaged (by yet another William Sowgate) to John Bayley, worsted weaver of Stowupland. John Bayley was Lord of one of Stowupland's manors, probably living at a house on the site of the later Stowupland Hall. Bayley was later in full possession of the farm.

In his will of 1704, John Acton of Bramford left £200 for the purchase of land which would be rented out and the proceeds to be used for the relief of the poor of Bramford -this was used to purchase the now Bramford Farm and another premises in Bramford.

In 1704 Turner and Thurmwood were still occupiers of the farm but from 1725 a Widow Scowing (Scowen) seems to be paying rent. A George Buxton appears to be the tenant of the land from 1747 until 1795. It is likely that the house and land were rented out separately as in 1782 there is a lease to Joseph Skowen Roper (maybe a relative of the widow Scowing).

Amongst the papers is a plan of the farm drawn up by a John Edwards who was probably one of the Bramford trustees. A string of tenants follow – George Turner farmer of Creting St. Peter around 1796, William Cooper farmer from 1804 to 1816 followed by John Cobbold 1816 up to 1848 when Thomas Cuthbert *hires cottage, barn and outbuilding with land at £35 p.a. for 8 years*. Cuthbert was a Stowmarket butcher who was probably using the land to graze cattle or sheep and would not have lived in the farmhouse which may have been empty or let out to another tenant.

The Bramford trustees as landlords would have had to keep the property in repair and there are some bills for repair work done in 1808 and when in September 1854 fire destroyed the barn, stable and outhouse and damaged the house the work of rebuilding was done by builder Francis Betts. Cuthbert was still renting the farm in 1867. There is a gap in our knowledge until 1932 when the tenant of the house was F.S. Diaper. There are a couple of letters from Diaper to the trustees of the charity complaining of the state of repair with holes in the roof and plaster coming off the walls. He was tenant until at least 1939. We know that a Mr. Peart was here in 1971 but we would welcome any information on the more recent history of Bramford Farm.



Sketch of Bramford farm in the late 18th century by John Edwards.

**Please contact Jerry on 01449 703717 or [voden@btinternet.com](mailto:voden@btinternet.com) if you want to make a comment or have a query about our meetings or Stowupland's history.**

And so, to Jerry's report on **"Angels and Demons" fly in for our March 2024 meeting.**

This was our delayed talk from November 2023 as we welcomed back Sarah Doig, who had to change the programme in November, to a different subject. Sarah told us her interest in churches dated from the 1960s when her father was first appointed as Curate in Mildenhall Church. She spent her childhood going around various Suffolk churches with her family as her dad took various services in different locations around the County.

Sarah's research was backed up with photos of the various churches she had visited, and her 'short' list comprised 50 churches around the area and also, a passport to Norfolk where some of her research had taken place. I cannot do justice to the detailed research she has done without the benefit of her excellent desk top presentation. It is also interesting to note that the research had included a look at Catholic and the many non-conformist chapels in the area.

However, I did note some examples relating to church construction over the years. St Mary's the Virgin church at Oberton has a remarkably creaky door as you enter which can be a little unnerving at night but go in during the day and it opens to a remarkable light church and the inside is always bright. St Marys at Westley was the first to use a cement mix in 1834, this using precast cement. I also noted that a lot of the churches in both Suffolk/ Norfolk are round towers in design, more than other areas in the country.

One notable story about Royalty was the story of Charles II who recently restored to the throne in 1670, had been to stay with the local Lord of the Manor in Suffolk. He insisted on visiting the local church at Little Saxham, after the festivities of the night before where a meal in his honour had been prepared, along with, so the story goes. much locally brewed ale. The King fell asleep during the sermon by the local vicar, and on waking had asked his secretary to obtain a copy of the sermon so he could catch up, apparently on receipt of this he was so impressed with the sermon that he asked for it to be circulated to the local population. This is recorded in Samual Pepys diaries of the day as he was travelling with the King as part of his team as he went round the area.

As I said earlier you really needed to see Sarah's talk in full or get a copy of her book on this subject, to take in her full research on this interesting subject.

This month Annie and Liz were unable to make the meeting, thanks go to Joyce and Iris for stepping in to provide our much-needed refreshments, and Neil thanked Sarah for coming to do the talk on "Angels and Demons."

## DOWN MEMORY LANE

Do you still have a copy of the 2010 leaflet '**Stowupland Our Heritage, Walks around Stowupland**', not to be confused with the 2022 leaflet '**Stowupland Village Walks**'?

The earlier leaflet contains some interesting information about the village, including this photo of the Old Pump House that stood near Birch Close. I understand that before it was demolished it was used as changing rooms for Stowupland Footballers.



## Computer Repairs



Hardware diagnosis and repair, plus....

Need help with Software?

Microsoft Windows, O365,

E-mails not sending or receiving?

Problems searching the internet,

Broadband connectivity issues,

Virus issues, printer setup

Phone Shelli on

01449 770704 07733 262116

Support local Business!

## Eastern Frames

### Bespoke Framing Service

Greeting Cards & Photo Frames

X-Stitches Stretched & Framed

### Fast & Reliable Service

[www.EasternFrames.co.uk](http://www.EasternFrames.co.uk)

Red House Farm,  
Station Road  
Haughley.

Tel. 01449 675897

Monday – Friday

9.00am – 5.00pm

Saturday

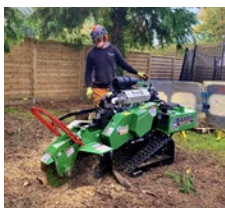
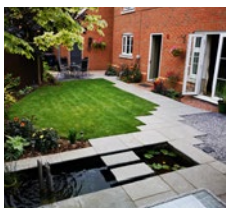
9.00am – 12noon



## W. Jarvis & Son Tree Services & Landscapes



Scan  
me!



All aspects of tree surgery,  
landscaping and fencing undertaken.

Fully insured, 24hr callout,  
council approved contractor  
with over 40 years in the industry.

Call for a free estimate & advice

T: 01359 241958

M: 07891 208710 • 07850 046504

Visit our website for information about  
our company and the work we do  
[www.wjarvistreeservices.co.uk](http://www.wjarvistreeservices.co.uk)





# **STOWUPLAND WILDFLOWER AND BIODIVERSITY GROUP**



## **Sunflower Competition**

Last month you should have received in your Telstar some sunflower seeds and, hopefully, they are now growing in pots, ready for planting out in the garden - as part of our competition to grow the tallest sunflower. And to encourage bees and other insects; and to grow sunflower seeds for birds to eat in the winter.

## **Hedgehog Projects**

We are working on hedgehog projects with Freeman School and hoping to set up some video recording equipment so that students will be able to see hedgehogs in action.

We are waiting for details of the national hedgehog survey. We hope to be part of this work from September onwards.

## **Biodiversity input to Neighbourhood Plan**

We have prepared an addendum to the Neighbourhood Plan covering a range of aspects ranging from reducing climate change to improving biodiversity. This has been put forward to the Parish Council.

## **Wildflower Meadow**

Our 150 Oxlip plug plants are growing steadily and we hope to plant them out at the end of April.

We plan for the meadow to have one cut this year, in September, and the mown grass collected and removed.

At our next meeting we will be planning further native bulb planting. Possible sites are additional planting in front of Birch Close ditch and the bank in front of The Retreat.

## **Work with Schools**

At Freeman School, the fruit trees are looking good. The new trees at the High School are doing well: the older trees will need surgery in the autumn to remove dead wood.

Raised beds are in place at the High School and the Mulberry Centre and filled ready for planting by students.

## **Tree Planting**

We still need suggestions for where trees might be planted to help Mid Suffolk increase its tree cover from 8% to 15%.

**Our next meeting** is at 7.30 on 13 May, in the URC Meeting Room. Everyone with an interest in wildflowers and biodiversity is welcome to come along.

## Stowupland Village Hall

### Excellent facilities - competitive prices



Our Village Hall is just the place for clubs and groups to meet or for special functions, such as parties, receptions and exhibitions.

There is one large room suitable for 140-260 people depending on the event. A small one seats up to 20 people. There is a well equipped kitchen, and a licensed bar, plus an audio-visual system and Wi-Fi. There is ample car parking and an outdoor children's play area.

Interested? Look on our website at <https://hallbookingonline.com/Stowupland>

Or contact Lisa Tunbridge our booking secretary

Tel: 07515 859337 email: [stowuplandvillagehallbookings@gmail.com](mailto:stowuplandvillagehallbookings@gmail.com)

### You could advertise your business here for only:

**Quarter page** £11 per month

**Half page** £22 per month

**Whole page** £44 per month

**Whole back page *black and white*** £66 per month

**Whole back page *colour*** £120 per month

Please contact: Sally Wray by email [adverts.telstar@hotmail.co.uk](mailto:adverts.telstar@hotmail.co.uk)

### Do you need help with:

Personal Care  
Dementia Care  
Overnight Care  
Help around the house  
Companionship

Contact us for more  
information or a brochure:



01449 678000



[www.mycare-at-home.co.uk](http://www.mycare-at-home.co.uk)

  
My Care  
AT HOME

Providing care and  
support in your  
own home

RECRUITING  
CARE  
PRACTITIONERS  
NOW!

# **JUBILEE LADIES CHOIR**

**AVRIL HUNT**

We are back enjoying our singing with a lovely selection of songs, several from popular shows, ready for our summer season.

We're performing with the Stowmarket Concert Band in May, exact date to be confirmed. We also have a concert at the Pilgrim Care Home, Gt Finborough in June.

Our own concert will be after that but we're available to sing at weddings, fundraisers or any other event. Please consider us and give us a call.

New members are always welcome, no age barrier, no auditions, ability to read music useful but not essential. Our conductor and accompanist are professionals and guide us to be the best we can be.

We're a sociable group of women, and singing is very therapeutic.

Practice is at 7.30 p m on Tuesdays at the United Reform Church, Stowmarket, used by choirs because of the excellent acoustics. Come along and listen and see if it might be for you. Members come from several surrounding villages including Stowupland.

Any questions, please call Di Balaam on 01449 736374 or Avril on 01449 798365

# **STOWUPLAND BOWLS CLUB**

**JOHN MOLLETT**

It is with much sadness that I heard the news that our Chairman, Frank Boxall is to stand down as chairman of the club. His enthusiasm and great sense of humour has brought the club through the most difficult of times and made safe the future of the club. We wish him and his wife our best wishes for their future.

We recently held a games evening which was most enjoyable although I understand that the air hockey became a little aggressive and a certain person was shown a yellow card.

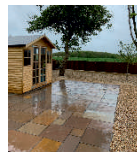
Despite the bad weather the green is looking very good thanks to the hard work of the team looking after it.

With the season start in April we are now well underway, and I wish all bowlers a happy season and enjoy your bowls.



**07787 551185**  
shedbasessuffolk@gmail.com

**Existing shed demolition and site clearance**  
**Garden Office ground preparation**  
**Concrete shed bases**  
**Patios**  
**Driveways**  
**Man & Micro Digger Hire**  
**Fully Insured family business**



**F. G. BROWN – OPTICIANS**  
**Denmark House, 41 Bury Street,**  
**Stowmarket.**

**Tel:- 01449 612812/674030**

**As independent opticians we offer a more personalised eyecare service that you can trust for all the family including:-**

**Optomap retinal examination**

**Colorimetry**

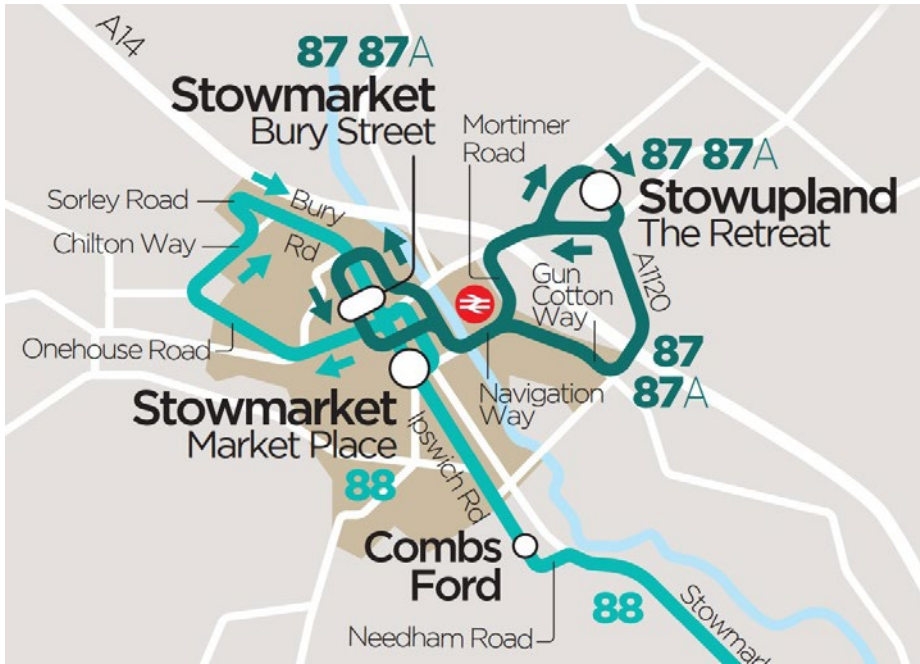
**A wide range of competitively priced frames and spectacle lenses**

**Contact lenses**

**Prescription and non-prescription sunglasses**

***Your sight care is our priority***

# NEW BUS SERVICE STOWMARKET TO STOWUPLAND



**87 | 87A** Stowmarket town centre | Cedars Park | Stowupland circular

Mondays to Saturdays (except public holidays)

	87	87A	87	87A	87	87A	87	87A	87	87A	then at these mins past each hour	87	87A
Stowmarket Bury Street	0710	0740	0810	0840	0715	0745	0815	0845	0915	0945			15
Cedars Park Tesco	▼	0746	▼	0846	▼	0751	▼	0851	▼	0951		▼	51
Stowupland Thorney Gm/The Retreat	0720	0753	0820	0853	0725	0758	0825	0858	0925	0958		25	58
Cedars Park Tesco	0724	▼	0824	▼	0729	▼	0829	▼	0929	▼		29	▼
Mortimer Road Creting Road	▼	0759	▼	0859	▼	0804	▼	0904	▼	1004		▼	04
Stowmarket Bury Street	0735	0805	0835	0905	0740	0810	0840	0910	0940	1010		40	10

these buses run on Mondays to Fridays only

these buses run on Saturdays only

	87	87A	87A	87A	87A	87A
Stowmarket Bury Street	1715	1745	1815	1845	1820	1850
Cedars Park Tesco	▼	1751	1821	1851	1826	1856
Stowupland Thorney Gm/The Retreat	1725	1758	1828	1858	1833	1903
Cedars Park Tesco	1729	▼	▼	▼	▼	▼
Mortimer Road Creting Road	▼	1804	1834	1904	1839	1909
Stowmarket Bury Street	1740					

these buses run on Saturdays only

these buses run on Mondays to Fridays only

For more details you can go to the companies website: [https://www.firstbus.co.uk/sites/default/files/public/node\\_images/norfolk-suffolk/FEC-lpswich\\_Reds\\_Stowmarket\\_Swift\\_88\\_89-Bus\\_Times\\_from\\_14-04-24.pdf](https://www.firstbus.co.uk/sites/default/files/public/node_images/norfolk-suffolk/FEC-lpswich_Reds_Stowmarket_Swift_88_89-Bus_Times_from_14-04-24.pdf)



The  
United  
Reformed  
Church

# U.R.C CHAPEL

NEWS

Minister: Revd Robert Sheard  
Telephone 01449 678173

With the increasing population around Stowupland, what better time is there than Spring to make new friends, why not join us at one of our Coffee Mornings on the last Friday of each month. The next one is on **Friday 31st May 2024 10am to 12noon**. Also, we are always seeking to widen our congregation, please see below for details of our Sunday Services: -

Services are held at the URC Chapel, Church Road, Stowupland each Sunday at 10.30am and you are cordially invited to join us in our worship. A warm welcome awaits you.

## The Speakers for May are as follows:

05 May	Ron Wade
12 May	Keith Scarff
19 May	Rev Richard Edwards
26 May	Worship Group.

*Joyce Gardiner*

## MINISTERS MESSAGE

"Yes, even on my servants, both men and women, I will pour out my Spirit in those days, and they will proclaim my message." (Acts 2 :18)

Dear Friends,

In the Christian calendar we go from the hope at Easter to starting to preach the message of the Good News in May. We first have Ascension Day on the 9th May and Pentecost on the 19th May. It can be said that May is about an ending, and a new beginning.

Ascension Day is when we remember Christ ascending to be with his Father in Heaven, the last time he was to appear to his disciples here on earth. Pentecost is the Birthday of the Church, when the spirit was poured out on the Disciples, which marked the beginning of the Church.

As a Church, we could be said to be having endings and beginnings all the while. The Church over the centuries has gone through many changes both in worship, and the buildings in which we worship, this can be partly seen in the many denominations that we have. The Church of the past years has had to find new ways of being Church.

For the Church to be vibrant and relevant it has to be prepared to change, but not to go along with secular fads, the Church needs to be relevant to every generation, and sometimes for us that has been within the Church, for many years those changes may not always seem necessary.

The challenge that each Pentecost gives us, is first to look back to that first Pentecost, to when the first Disciples were thought to be drunk, but were indeed infected by the Holy Spirit, to learn from them and to move forward in the power of the Holy Spirit. In our secular society Church is not as relevant as it once was, and our challenge is to show the world that the Church can still be relevant to them, and to us.

In his speech to the fledgling Church, at that first Pentecost Peter spoke the words of the prophet Joel:

*“This is what I will do in the last days, God says “I will pour out my spirit on everyone. Your Son & Daughters will proclaim my message, your young men will see visions, and your old men will have dreams, yes even on my servants both men and women, I will pour out my spirit in these days, and they will proclaim my message.”*

Even today these words still have relevance for us, even in our days where science seems to have all the answers, if we only let the Holy Spirit in, it will be amazing to see how much the Church will become relevant, especially to a society that thinks it has all the answers.

This Pentecost let us treat it as though it is our first and ask God to send his Holy Spirit upon us and see where it leads us.

*Yours in Christ, Robert*

*Reverend Robert Sheard Minister of the Stowmarket group of Churches. The group consists of Stowmarket, Debenham, Mendlesham, Haughley & Stowupland)*

## **COFFEE MORNING**

**Friday 31st May 2024**



Stowupland URC Chapel  
10am – 12noon

Coffee, Tea and Cakes

All welcome

# HOLY TRINITY CHURCH

## NEWS

HOLY TRINITY CHURCH  
STOWEIELD

Rector: Revd Paul Clarke Tel. 07903 452010  
Churchwardens: Mrs Ann Doubtfire Tel. 770363  
Mrs Sue Hayter Tel. 613710  
Email: revpaulclarke@me.com



The new buzzword among mental health professionals is no longer self-esteem. According to Psychologists, self-esteem is a judgement that says, 'I am above average' and forces us to ask ourselves, 'Where do I stand in the order?.' It is ultimately measurement. And that's good for those who exceed the average on the measurement scale but not so much for those who fall below.

On the other hand, self-compassion is treating yourself as you would a good friend or neighbour. Does that sound familiar? It is like Jesus' command to "Love your neighbour as yourself."

I work as a school counsellor. I would say that every young person and most adults I see suffer from a self-esteem issue. That is, they judge themselves and are left wanting, or measure themselves against other people. This is often due to bereavement, family conflict, poverty or a traumatic event or events. In my community of counsellors, psychotherapists and psychologists, self-compassion is the answer. Simply put, the world is lacking in compassion.

Historically the church grows when it has understood the needs of the community. A great example of this was in the 19th century when the church set up Sunday schools. Sunday schools did teach religious instruction, but they were primarily teaching children to be literate, welcoming them into the worship space and helping with devastating poverty.

The world's needs are enormous, and one of the greatest needs in this generation is the mental health crisis. Luckily for me, that is my job. I love taking away people's measuring sticks and permitting them to love themselves, warts and all.

But sometimes there's a missing link, which is God. God's message is that people can believe themselves worthy of love because he tells them that they are loved, no matter what they look like, what they've done or what others perceive them to be. God says, 'You are made in the image of God' and Jesus was a man full of compassion loving those who were often unloved by others.

We often bemoan the falling numbers in our churches, but maybe we are not in tune with today's urgent needs. Perhaps to show God's light, we need to respond by speaking to people's deepest needs.



In my view, compassion is one of the deepest needs in our society today. I haven't decided how the church does this, but it needs to be done. The church is brilliant at putting on services, providing fellowship, and feeding the poor, but is that enough? All those things are good, but we also need to communicate that becoming part of Jesus' community is to feel compassion from the creator of the universe.

*Rachel Clarke - Lay minister*

*Benefice of Haughley with Wetherden and Stowupland.*

### Services in May 2024

5th May            9.30am Morning Worship  
9th May (*thu*)    7.00pm Ascension Day Service  
12th May         9.30am Worship for All  
19th May         9.30am Morning Worship  
26th May         6.30pm Festival Communion Service

**A PRAYER:** May the God of all love, who is the source of our affection for each other formed here, take our friendships into his keeping, that they may continue and increase throughout life and beyond it, in Jesus Christ our Lord.  
*William Temple*

**2024 FLOWER FESTIVAL:** Please see full details inside and come along to enjoy the splendid flower displays on Saturday 15th & Sunday 16th of June, displays on the theme of **Occupations** — you won't be disappointed! There will be refreshments in the Church Hall for you to enjoy!

**FOOD BANK BOX:** If you would like to donate items for the Food Bank to help those in need of a helping hand, there is a box at the back of the church for you to leave your items. The church is open during service times and on the 3rd Saturday morning each month to accept donations. Thank you!

**COME AND JOIN US FOR**

**Stowupland Church Hall**

Saturday 18th May 2024

10-12

There will be tea/coffee, cakes,  
raffle and good company

Everyone is welcome



# HOLY TRINITY FLOWER FESTIVAL

Sat 15th June and Sun 16th June

## Theme: Occupations



What better way to celebrate creativity and nature than displaying beautiful floral arrangements in Church.

We have been holding an annual flower festival for many years, and this year we would like to invite you to take part with the theme of 'Occupations'.

The invite is open to individuals, Clubs, Schools, Businesses, in fact anyone who would like to help decorate our Church – you will all be welcomed.

The flower festival is one of a few regular events we hold to raise funds for the Church. As well as having the flower arrangements on display, home made refreshments will be available in the Church Hall throughout the weekend.

If you'd like to take part or would like to find out more, please contact Ann Doubtfire: [anndoubtfire1@gmail.com](mailto:anndoubtfire1@gmail.com) or 07747660813

## 'I'm in PAIN!' Can Chiropractic help me?



### Your initial visit will include:

- A consultation with the Chiropractor
- A thorough spinal examination with Orthopaedic & Neurological tests
- A confidential report of findings
- An explanation of our treatment programme if we determine Chiropractic can help you.



6 Glastonbury Road  
Bury St Edmunds,  
IP33 2EX

01284 706570



7 Stowupland Road,  
Stowmarket,  
IP14 5AG

01449 612620

**Call TODAY for an appointment**

Please visit our website for further information

**[www.abbeychiropractic.com](http://www.abbeychiropractic.com)**

Registered with The GCC, RCC, SCA & BCA

# THE TELSTAR TEAM

**Editor** - Sarah McManus – 07849 506898 - The editor welcomes contributors. Please send all articles and contents to [articles4telstar@hotmail.com](mailto:articles4telstar@hotmail.com) or write c/o 4 Oak Apple Drive, Oak Farm Meadow, Stowupland, IP14 4FH.

**Business Advertising** - Sally Wray - [adverts.telstar@hotmail.co.uk](mailto:adverts.telstar@hotmail.co.uk). Businesses with a Stowupland connection can advertise at very reasonable rates.

**Diary Dates** - Neil Langridge – [stowman@stowman.plus.com](mailto:stowman@stowman.plus.com) 01449 616275. To let the village know the date and venue of your event contact Neil to be included in the diary dates.

**Distribution Co-Ordinators** - Keith and Cathy Welham – 01449 673185. Colin Vickridge and Keith Welham are our proof-readers and Jerry Voden chairs meetings of our team. The entire team are unpaid volunteers.

Telstar is distributed by a team of volunteers who deliver the magazine to over 1,250 homes in Stowupland. The magazine is produced every month, with the exception of December and January, which is a combined copy that gives our trusty team of volunteers a well-earned Christmas break!

Telstar is funded by grants from Stowupland Parish Council and Mid Suffolk District Council as well as income from business advertisers.

## **From the Telstar Committee**

Please note that the opinions expressed in letters and articles are not necessarily those of the Telstar Committee. We cannot be held responsible for the accuracy of material submitted for publication. We reserve the right to include, edit or amend as we think appropriate. Telstar is produced in good faith but errors or omissions may occur during the process of production. If this is the case, please let us know so that errors may be corrected.

## **Advertising Disclaimer**

All adverts are placed in good faith and the publishers cannot be held responsible for any work carried out. Advertisers details are not passed to any other publishers.

***Telstar – for the community, by the community.***

**Deadline Date:** 7th May 2024 for June 2024 Edition

Printed by Gipping Press Ltd. Tel: 01449 721599. Web: [www.gippingpress.co.uk](http://www.gippingpress.co.uk)

**Community**

**BINGO**

**NIGHT**

**All Cash Prizes**

**FRIDAY 30<sup>th</sup> May**

**STOWUPLAND VILLAGE HALL**

**Doors open 7.00 pm**

**Eyes down 7.30 pm**

**Everyone Welcome (over 14's only).**

**Bring your own drink and nibbles**