

Telstar



Stowupland News

No 353
May 2022

In this issue of Telstar:

- Queens Jubilee Programme *Page 21*
- Stowupland Village Hall *Page 43*
- Bowls Open Weekend *Back Cover*

M & M Butchers
Mark Hammond

Suppliers of high quality meats, poultry,
game and award winning sausages.

Local Meats * Home Cooked Pies
Home Cooked Hams
Dry Cured Bacon & Gammon
Selection of Homemade Burgers
Big Selection of Specialist Cheese

Local Delivery

Opening Hours

Monday & Tuesday 6.30am to 1.00pm
Wednesday Thursday Friday 6.30am to 2.00pm
Saturday 6.30am to 12.30 pm

The Green Stowupland Suffolk
IP14 4AR

Telephone :

01449 677720

EDITOR'S NOTES

MAY 2022



Finally, we have had some lovely sunny days and it has been nice to see so many of you enjoying our open spaces!

As I write, the works around the Green are coming to an end and hopefully, we shall soon be left in peace without constant roadworks. There has been some confusion outside the Co-Op with cars queuing for fuel. I urge you all to be sensible as clearly the road cannot accommodate queues and it is dangerous.

By the time you read this the Easter Holiday will be over and we will be heading into Spring! Take advantage of the various events planned, the May Bank Holiday Walk, The Bowls Club Open Days or just take off into the countryside and watch out for the birds mentioned in Countryside Rambler.

There are recipes for Jubilee treats, something to bring to the village picnic or to enjoy at your Street Party or just celebrating with friends and family. Start planning how you will enjoy the Jubilee in June.

My last editorial will be next month. If you fancy doing something for the community and carrying on my work, please do get in touch at Kay.Telstar@gmail.com.

Kay, Editor

Cover photo taken from the Jubilee Bench towards the half mow.

EDITOR REQUIRED

Telstar is looking for a new editor.

There are no special requirements just an ability to know your way around a computer a little bit and common sense!

Kay is willing to mentor a new editor and show them the ropes.

Initial enquiries to Kay.telstar@gmail.com

We would also like to expand out team of Deliverers.

We need deliverers for various parts of Stowupland, including relief deliverers to cover holiday periods.

If you can help, please contact Cathy on 01449 673185.

THANK YOU

My sister, Tracy, and I would like to say a HUGE thank you to everyone who stopped to help our Mum - Marian Smith - when she fell (at the end of Devon Road, Monday 28th March) and banged her head. Thank you for making her as comfortable as possible and for staying with her.

The hospital said she had a concussion, but she was able to come home that night. Mum is definitely on the mend & wishes she could hug you all!

Thank you so much, once again, you lovely people!

A SPRING TIME WALK!

Jane and Dan Gurney invite you all to join them on a village walk around the fields on Bank Holiday Monday, May 2nd 2022, followed by refreshments. The walk will leave "Crowstone" (the house two doors from the Co-op garage) at 10.30 and will last about an hour. If you are unable to walk any distance, please just come to the house to partake of the refreshments and socialise from 11.00 onwards. Any donations for Christian Aid will be gratefully received. Please do join us if you are able, to enjoy our beautiful countryside, the company of others and, hopefully, some sunshine.

Jane Gurney



**STOWUPLAND
GOOD NEIGHBOURS**

A volunteer service run by residents for residents
Helpline 07591 539 621

COUNTRYSIDE RAMBLER

BRIAN WARD

I am amazed at the number of cowslips and primroses we have along our local footpaths. Walk along any footpath, in any damp, shady spot you will come across these vibrant spring flowers.

The owl box I put up a couple of years ago unfortunately got dislodged when the tree blew down in the last gales. It attracted a pair of little owls and, since their home was no more, I felt obliged to build another box and install it on the remaining stump. I have my fingers crossed the wee owls will return and take up residence.

As with many of you who have bird boxes in your garden, the blue and great tits are starting to investigate or even build nests ready to lay their eggs and rear their young. It must be difficult as these small birds have to determine when, in a few weeks' time, the caterpillars and other grubs will be in sufficient numbers, particularly on the oak trees, to feed their offspring.

If they get it wrong the first brood will fail and they will have to start again which takes a lot of effort for such small birds. We are so lucky in Stowupland to have a variety of local walks, not forgetting our lovely village Green which footpaths cross and also surround this precious green space.

It is during March and early April you will hear the woodpeckers drumming in the woodlands. The main woodpecker to drum is the great spotted woodpecker. It will use the same few dead hollow branches to deliver the sound from normally quite high up and with good vision to survey its territory. I believe the drumming is to attract a mate and to ward off any rival males in the vicinity. Quite often a bird will commence drumming and another in a nearby wood will drum back.

The other woodpecker to drum is the lesser spotted woodpecker which is only the size of a sparrow and unfortunately quite rare now. Another woodpecker is the green woodpecker which spends most of its time on the ground searching for ant nests which it pokes its bill into and with its very long tongue extract the ants and their larvae. All our true woodpeckers will bore a hole in a rotten tree and at the bottom of a chamber lay their white eggs. Both green and great spotted woodpeckers are in the countryside that surrounds Stowupland so keep your eyes peeled and you may spot one.

Bluebells are now blooming, there are several woodland walks that contain vast carpets of these magnificent flowers. Try to pick a sunny day to visit, so the bees will be buzzing around with the shafts of sunlight penetrating the open canopy; just stroll through and enjoy the atmosphere.

Keep safe and well and enjoy our fresh country air along your rambles.



TOMLINSON GROUND CARE



JOHN DEERE

Horticultural & Garden Machinery Suppliers

Sales Service Parts Repairs Toys

Ride on mowers from £1899 inc vat

Walk behind petrol & battery mowers from £249 inc vat

Strimmers, hedge cutters, blowers, chainsaws etc

Garden tools, paddock & turf machinery

Service & repair all makes



Set in over 20 acres - Try before you buy

Established in Buxhall since 1991 - We hope to see you soon

Brettenham Road, Buxhall, Stowmarket IP14 3DL
01449 736060 www.tomlinsongroundcare.co.uk

AL-KO

EGO

ECHO

WEIBANG



BusyB

**Quality Dressmaking,
Alterations and Textile Crafts**

A professional bespoke service from a friendly local
dressmaker.

Call for an obligation free quote.

Find me on Facebook as 'Bev Busyb'
or Google Maps – search for 'BusyB'

Mob: 07753 177703 Tel: 01449 737618

email: busybev@btopenworld.com

www.busybev.co.uk

**JOHN BULL
MOTORS LTD**

**Petrol and Diesel
MOT testing
Servicing and repairs**

**Unit 7B Charles Ind. Estate
Stowmarket**

Phone: 01449 774150

Fax: 01449 675898

**Email:
Johnbullmotors@btconnect.com**

COMMON-TATER

KATE ELLIOTT

When shoots start to appear above the ground a couple of weeks after you've planted your seed potatoes, you'll need to 'earth them up'. As soon as the shoots are tall enough - about 12cm - then you can do this.

Essentially, earthing up is when you cover these shoots with fresh soil or compost. Earthing up potatoes can be done every two to three weeks to ensure you get the best potatoes possible by harvest time.

Earthing up potatoes protects the shoots from frost damage, but that's not the only reason you need to go through the process. Covering the shoots with extra soil encourages larger crops and maximises the quality and number of potatoes you grow. This is because potatoes grow near the surface of the soil, so increasing the amount of soil covering the shoots means you're giving the shoots more space to make new potatoes.

More importantly, potatoes need to be totally covered otherwise they will turn green. Green potatoes aren't just unsightly - they are poisonous and must not be eaten.

Earthing up is really easy and all you need is a spade. Draw the soil up around and over the shoots and create a ridge about 15cm high. As the shoots grow, repeat this process several times. Also make sure you keep the plants well-watered if the weather is particularly dry. You should stop earthing up your potatoes when the final height of your ridge you have created is between 20-30cm.

When growing potatoes in large pots or sacks, the tubers will have been planted into approximately 10cm of compost at the base of the container. As the shoots emerge, add more compost at regular intervals, 5cm at a time, until the container is almost full.

Growing your own potatoes is an absolute treat. It is right at the core of the pleasure of growing your own.

You could advertise your business here for only:

£10 per month (Quarter Page)

£20 per month (Half Page)

£40 per month (Whole Page)

Please contact: Sally Wray by email
adverts.telstar@hotmail.co.uk

DOWN TO EARTH

KATE ELLIOTT

There cannot be a more jubilant month in the gardener's calendar than May. The whole garden is full of unstoppable energy. The garden changes daily - almost hourly - with growth and more intense colour from alliums, tulips and the first bearded irises. You can see new flowers opening every time you step outdoors.

For me, nothing celebrates the glorious month of May more than the wonderful froth of cow parsley. It is, I suppose technically a weed, but it is a most beautiful one and at Columbine we love it. We have it growing in our orchards, moat banks and under pleached lime trees planted with white tulips. Cow parsley are umbellifers and are a good thing to have, as they attract a range of beneficial insects such as hoverflies and ladybirds into the garden.

There is a cultivated variety *Anthriscus sylvestris* 'Ravenswing', with purple leaves and brown stems beneath the white, lacy flowers. It cross-pollinates with the wild cow parsley, which means that the offspring quickly loses the intensity of purple leaves, so if it's purpleness is the main attraction for you then keep it well away from its wild cousin. I confess I do not mind as I am besotted by cow parsley in all its variations.

For obvious reasons we grow and adore *Aquilegias*, as their common name other than granny's bonnet is columbine. They don't just look pretty but are terribly easy to grow, unfussy about soil, seeding themselves everywhere and being herbaceous perennials, come back year after year without any attention or hardly any horticultural care needed.

They are happiest in semi-shade as strong sunlight and heat stunt their growth and singe the delicate leaves. The delicate glaucous broad leaves have the habit of holding drops of rain after most plants have slid the water away and the combination of the blue-green leaves tinged with violet and the clear crystals of water is enchanting.

When they have finished flowering - around the end of June - cut the stalks off and let the leaves do their stuff without the distraction of drying spikes of stem.

Despite being a major weed, grow where we don't want them and sting us appallingly, every garden should have a patch of nettles.

They are an excellent source of nutrients, especially nitrogen, magnesium, sulphur, iron and phosphate. Soak just over a 1lb of nettles in a 1 gallon (5 litre) bucket of water for two weeks. It makes the most wonderful liquid feed - as a general-purpose plant boost in spring and summer - by diluting the resulting nettle liquid with ten parts water.

Don't be tempted to use a stronger mixture and use once a week at most. It can be applied to the roots or as a foliar spray. But don't over-feed young plants as that will do more harm than good.

Here are some more jobs you can be doing:

- Support tall herbaceous plants while they are still small.
- Apply a liquid feed to daffodils and other spring bulbs to encourage a good display next year.
- Sow sweetcorn in deep pots so young plants are ready to plant out in the garden in June.
- Continue sowings of beetroot, salad leaves, lettuces, carrots and radishes.
- Prune forsythia after flowering to keep it compact.
- Plant out summer bedding and tender annuals after the last frost, having hardened them off for a week or two first.
- Open greenhouse doors and vents on warm days but close them in the evening as nights can still be cold.
- Scoop out blanketweed and algae from ponds and water features.
- Clean out and scrub bird feeders regularly to maintain hygiene.
- Take cuttings from dahlias, fuchsias and pelargoniums.

For a few weeks the gardens here at Columbine are elevated by morning dew and cow parsley, apple and hawthorn blossom, bluebells fully on song and the dawn chorus. It is important to take the time to enjoy spring as it unfurls in the garden - relish every hour of it.



Computer Repairs



Windows, MS Office, E-mail,
Internet, Broadband, Security

Solutions resolved remotely
(for those in self-isolation)
or in your own home

One to One tuition.

Phone Shelli of MPM on
01449 770704
07733 262116

Let a local company in Stowupland
support you.

Eastern Frames

Bespoke Framing Service

Greeting Cards & Photo Frames
X-Stitches Stretched & Framed

Fast & Reliable Service

www.EasternFrames.co.uk



Red House Farm,
Station Road
Haughley.

Tel. 01449 675897

Monday – Friday

9.00am – 5.00pm

Saturday

9.00am – 12noon

Andrew Bingham

INDEPENDENT FUNERAL SERVICE

Stowmarkets Independent Family Funeral Service

24 Hour Personal Service • Private Chapel of Rest • FREE Parking



Telephone: **01449 771666**
www.andrewbingham.co.uk



The Nutshell, Milton Road South, Stowmarket, Suffolk IP14 1EZ

Golden Charter
Funeral Plans 

STOWUPLAND BIODIVERSITY AND WILDFLOWER GROUP

The family day organised by the group at the village hall on 19th March was a great success with people queuing at the door ready for the hall to open. All the nesting boxes were put together and taken home, but we still have some bug hotel kits left. One comment from a Stowupland mum who came with her two children was *"It was great – thank you to everyone. Sam and Jessica enjoyed it, even sacrificing a karate lesson to continue! They are looking forward to mounting all their creations in our garden."*

After an anxious wait there are signs of a result from the bulb planting by the group on two areas of the green with some shoots appearing so look out for these near Birch Close and on the Retreat side of The Green.

There will be a visit to Gallowsfield Wood Haughley by the group on 23rd May when we will be shown around by Richard Stacy. Anyone wishing to join the visit should meet at the entrance to the woods at 7.00 pm. The site is located on the turning towards Harleston off the road that used to be A45.

Gallowsfield Wood is an area of twenty acres of woodland and open space close to the village of Haughley. It was established as an area for public use by Suffolk County Council, as part of the 1987 European Year of the Environment. The aim was to create an entirely new woodland, with the aim of enhancing the landscape whilst encouraging and promoting nature conservation and at the same time demonstrating a number of traditional woodland management techniques. In 2013 ownership of the wood passed to Haughley Parish Council.

Three members of the group were joined by four other volunteers after the family day to plant around 300 whips along the rear boundary of the cemetery. There are spare whips which will be planted along the northern boundary of the cemetery.

Anyone wanting for further information about the group contact

Kay Easter - kay.telstar@gmail.com or
Keith Welham - keithwelham48@aol.co.uk



STOWMARKET ECO FUTURE GROUP

Email: stowmarketecofuture@gmail.com

Website: <https://stowmarketecofuturegroup.co.uk>

Collections: Our **market stall** is collecting hard to recycle items on the 4th Thursday each month is on **26th May 9:30 to 11:30 am.**



Please follow us on Facebook or check our website.

There is too much going on to be able to say it all here!

Bury Quakers organise a **Silent Vigil** on the first Saturday of each month 11.30 to 12 noon. Opposite the Abbey Gate. Stand silently for Climate Justice and in solidarity with victims of Climate change.

16-22 May The Big Plastic Count organised by Greenpeace to gather the evidence needed to push for proper action on the plastic crisis. You can join in by reporting your plastic use for one week. Visit www.thebigplasticcount.com to register.

Don't forget – It's No Mow May!

Our exhibition is launched, and looking great with lots to see, read and interact with. The Wildlife writer Dave Goulson sent us a quote which was read at the launch.

"The UK has about 22 million private gardens, covering one million acres. Imagine if they were ALL wildlife friendly, pesticide free, had carbon rich soil, a productive veggie patch, a compost heap, wildflowers, bumblebees and butterflies. Small or large, each garden really does make a difference."

Every Garden Matters will tell you how to do just that. It's great for all ages too.

We have various events running alongside the exhibition.

On **14th MAY** there is an **INSECT DAY** Hawk Honey and Dr Ian Bedford will be on site at the museum with walks, fascinating talks and a Q&A session on how to deal with Garden pests in an eco-friendly way. Book via the museum Website Home - Museum of East Anglian Life

Save the dates for an Eco group networking day on 18th June, and a Craftivism day on 24th September.



Every Garden Matters

How to Save the World One
Garden at a Time

9 April - 8 October 2022

Co-curated exhibition with
Stowmarket Eco Future Group



07787 551185
shedbasessuffolk@gmail.com

Existing shed demolition and site clearance
Garden Office ground preparation
Concrete shed bases
Patios
Driveways
Man & Micro Digger Hire
Fully Insured family business



Find us on:
Facebook



24 HOUR LOCKSMITH
BASED IN STOWUPLAND

NO CALL OUT FEES
All locks supplied and fitted

TEL: 01449 673770
(HOME)

TEL: 07525 168895
(24 HOUR)



Email: arron@stowmarketlocksmiths.co.uk
www.a1carpentryandlocksmith.co.uk

*Fed up of running around
after your car?*

Why not give us the inconvenience
– it's part of our service

WE COLLECT & DELIVER

Servicing, Welding,
MOTs arranged
Air-conditioning recharged
General Repairs –
shocks, clutches, brakes etc
All work guaranteed

S & P Meta-care
Est 1990

Contact: Shane
Tel: 01449 771102 or 07802 545737

***Personal Service at
Competitive Rates!***



LOCAL HISTORY GROUP

Stowupland Local History Group on April 6th Members and visitors enjoyed Stephen Poulter's talk on **Suffolk's**

Lost Heritage, after our brief AGM. You can read some extracts in Jerry's review in next month's Telstar.

Hopefully you will be reading this in time for our **May 4th** meeting. Unfortunately, our talk on Thorney Green Road's archaeology has had to be postponed. Instead, we welcome back Geoff Robinson. This time he is getting us in the mood for the Jubilee with a talk on The Worlingworth's **"George III Jubilee Feast"** painting.

Our next meeting will be on **June 1st** when Dr Nick Amor will inform us about **Keeping the Medieval Peace**. The following day SLHG will be putting on a display in the URC Hall following the theme of **"70 Glorious Years"**. We intend to reflect on how Stowuplanders have celebrated previous jubilees but also on **70 Years of Stowupland's Pastimes**. We can only share what we have in our Archives. If you have photos of pastimes you took part in since 1952, we would love to see them.

Jerry's report from our March meeting when we welcomed **Val Dudley** to talk about:

"Stowupland in 1291" or "The Re-Building of a Manor House" in Thorney.

Neil Langridge had worked with Val over lock-down to translate a very rare parchment that described the building of a manor house. When they established that the house had been built where today cars park at Stowmarket railway station, Neil was keen to book Val to talk to our group.

Val explained that the document was a totally unexpected find as it was included in a roll with other documents that seemed unrelated to Stowupland; it dated from 1291, the 19th year of the reign of King Edward I. An early assumption was that it related to the building of Columbine Hall which was where Neil came in. He realised the connection to Thorney Hall, and they discovered that the Manor had been entered into the "Doomsday Book" in 1291.

Val compared the layout of the document as similar to how modern-day Ikea instructions might read on how to build a manor house. Unfortunately, some of the parchment was damaged and made more difficult to read, possibly by wine spillages. It would have been interesting to listen in on the conversation of all the master craftsmen on how they wanted to proceed with the re-build. I am sure we have had experience with this type of instructions trying to match figure 1 with X, Y and Z, and looking for the packet with the No.6 nuts or bolts. Sometimes a visit to the Pub is needed to calm down before proceeding with the build.

Val explained that the document was not put together in the order of work to be done, but had the appearance of being compiled later, maybe being pulled together from other notes. Bits about frame construction led onto flooring details. There was a section on roof construction with what to order in the way of roof tiles and the manufacture of roof nails. The production of nails for the roof was interesting as Val explained how they were produced in a forge one at a time and needed a specialist craftsman -100 nails cost roughly 1d. She also explained that it was unusual, possibly unique, for a house of this period to be tiled rather than thatched.

The site had to be prepared and trees felled to construct the building frame. Val had a slide show to show how it was probably raised into place, this required a team of 8 men with a further 5 carpenters to slot it all together. Progress depended on timely delivery of materials by road and river, with 12,300 roof tiles needed, production of nails and trees having to be felled to provide the timber. Delays to deliveries would lead to the workforce being idle till supplies arrived.

Properties might have two storeys or just one, depending on available money. A single storey layout included a great hall, kitchen, bedrooms, eating area, and other facilities all on one floor plan. Heating needed careful planning. With a thatched roof smoke could dissipate through the roof but a tiled roof required careful positioning of the chimneys. Doors, windows and utility equipment all reflected the high status of the owners.

In conclusion, Val reminded us that this was a valuable and rare document giving historians a fascinating description of a unique 13th century building. Although there is nothing left to see of the manor house now, Val suggested the possibility of a crowd-funding project to have an archaeological survey done.

The audience of members and visitors gave us the longest Q and A session we have had for a while. Val thanked Cliff Wyard for helping with the translation and Neil for locating the sites mentioned in the document. It was obvious that Val had done a lot of research around the subject looking into how craftsmen of the time might have tackled different aspects of the build. Her research has turned a lot of previously held beliefs about 13th century houses around.

If you would like to hear Val's talk or have questions, she is speaking to Stowmarket LHG on May 16th.

Neil 's further research into Stowupland's Mills.

The Domesday Book of 1086 tells us – *King William holds THORNEY, which King Edward held as one manor... This included 2 mills but now 1.* As windmills were not seen until the 14th century these would have been water mills. From the early 1400s Thorney had two water mills.

An undated but probably early 1400s rental of the manor of Columbine Hall (then held by the Hotot family) includes “the manor of Clement” as being held by Matilda Hotot and mentions two water mills: –

John Wolfnard for a water mill called Alwynesmelle.

William Lavenham for a water mill called Clementes melle

The 1327 subsidy return tells us: *William Clement taxed at 7 shillings fourpence farthing and Richard Clement taxed at 4 shillings and a halfpenny.* So these were two of the three highest taxed individuals in “Villata de Stowe” and probably the earlier owners of the manor and the mills.



Sites of 2 water mills, shown on the 1783 Hodgkinson's map, on the River Gipping

The area of Clements manor and the location of the water mills is defined in a 1554 document from the Manor of Haughley – *John Tyrrell: of Collombin Hall esquier holdethe att the Southend of Stowe Strete one close nowe divided into foure partes with one medowe or marisshe lienge in length on the Southe syde therof & one marisshe & aldercarre also in th'estend therof conteyning in the hoole 40 acres as ytt liethe in Stowe aforseid betwene the common Rever Runnyng from the Forthe mille [Alwynes later Ford Mill then Boulters Mill] unto the mylle of the seid John called Taylors Mylle on the Southe parte / And the wey called Clementes Lane [Takers Lane?] in parteon the Northe parte / And ytt abbuttethe uppon the Common Rever runnyng from Thorneye Bredg unto Taylours Mylle aforseid agenste th'este / And uppon the Kinges Highe Weye leding from Jppeswiche to Stowe agenst the weste:”*

Although the mills would have later milled grain, in the 15th century when Stowmarket had a flourishing cloth trade, they may have been fulling mills. Between 1546 and 1554 Clements mill is held by a Thomas Taylor while Alwynes mill is now Ford mill and held by a William Gower or Jower.

By the 19th century Clements Mill is Crosse's mill. Early maps of the course of the Gipping Navigation and Ordinance Survey maps show a watermill immediately downstream of the bridge across the river on the site of the later gun cotton works. The course of the navigation bypassed the original course of the river at this point, the original stretch of river forming the mill race.



Site of Boulters Mill

This stretch has since been filled in. This mill stood on the Stowupland side of the river so was also known as Stowupland Mill (the river being at that time the parish boundary) and by 1817 was owned by Mr. Pearl Cross. Passing to his widow Sarah and daughter Elizabeth. On 17th July 1852 William Freeman records in his diary going swimming at Miss Cross's mill.

In 1860 the mill was sold; Henry Wicks was miller, and it was described as a mill of four floors with three pairs of millstones.

It is uncertain when milling ceased but the mill must have been severely damaged in 1871 when the nearby gun cotton factory exploded.

Ford mill (formerly Alwynes Mill) continued working till 1853. William Boulter worked it till 1794 and following his death another William Boulter (possibly his son) took over.

As well as mills Neil has been exploring the roads of Stowupland, all-be-it from the comfort of The Record Office. In the 15th century, as he traced the river round to the West of Stowupland he came across 'le Sondsweye' or the 'the sand way' where now is Stonebridge Lane. Before a bridge was built there would have been a ford here and as there is a Gravell Field near by the name suggests that sand and gravel travelled along this road.

Why not come a long to one of our meetings, on the first Wednesday of the month (except in September) 7.30 in the Village Hall? You don't need to be a member, visitors pay £3,00 and after the talk Annie and Liz provide tea, coffee and biscuits (for a small donation). Either just turn up and enjoy the talk (thanks to Alan for organising the seating) or get more involved in Local History research, just let us know your interests and we will see what we can do. Membership can be taken out at any time of the year for a pro rata fee.

If you are nervous about coming along on your own then give Jerry a call and we can arrange someone to meet you, or just turn up and speak to Christine at the door and she will explain anything you need to know.

Contact our Secretary **Jerry Voden, 01449 703717; voden@btinternet.com**

DOWN MEMORY LANE

A Facebook post in All things Stowupland reminded us of this ditty. I knew it was sung at the 1967 School Concert but didn't realise it had been a school song. Does anyone remember the tune?



Here in Stowupland
There's a welcome on the mat
We're getting people galore
But there's room for many more



...
Lots of things for everyone to do
We will go half way to meet you
Lots of friends you'll have to greet you
In Stowupland you should settle down

With all the present house building its message seems topical, there are certainly lots of things to do and plenty for everyone to get involved in.

07534 525 263
01449 258 254

Gidney 
Plumbing & Heating Ltd

Professional & Reliable Service



**Plumbing, Bathrooms, Heating, Boilers, Servicing,
Underfloor Heating, Tiling, New builds & Renovations**

enquiries@plumbinginsuffolk.com www.plumbinginsuffolk.com

CHIMNEY SWEEP

ECO SWEEP CHIMNEY SERVICES

- NEW POWER SWEEPING METHOD USED FOR A MORE THOROUGH CHIMNEY CLEAN THAN BRUSHES.
- INDUSTRIAL HEPA FILTERED VACUUM.
- FULLY INSURED.
- INSURANCE RECOGNIZED CERTIFICATES ISSUED.
- SPOTLESS, RELIABLE AND FRIENDLY SERVICE.
- ALL CHIMNEYS, WOOD BURNERS, AGA, BOILER FLUES SWEPT.
- GUILD OF MASTER SWEEPS CERTIFICATED MEMBER.



Power sweeping



TEL. 01359 232335

COLNE ROOFING

Stowupland

Jon Johnson



Specialising in:

- New roofs
- Re-roofing
- Repairs
- Lead work
- Gutter maintenance



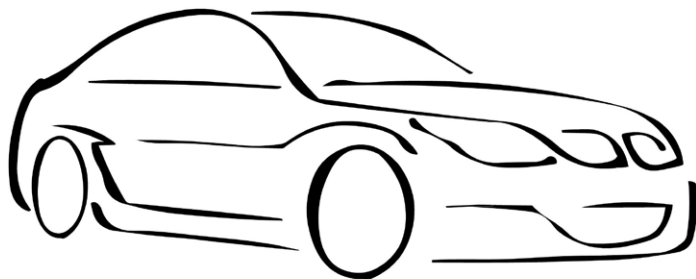
References upon request

Contact details:

07917 548441

colneroofing@gmail.com

FAST TEST STOWMARKET



MOT~SERVICING~AIR-CON

Fast Test can service all makes
and models of cars and light
commercial vans, as well as welding
repairs, computer diagnostics
and Air-Con re-gassing.

Fast Test can also offer a lift home
or to work in the surrounding
Stowmarket area or a courtesy vehicle.

Contact: Adam Bennett
Tel: 01449 770902

Address:
Unit 4, Tomo Business Park,
Tomo Road, Stowmarket,
Suffolk, IP14 5EP



THE QUEEN'S PLATINUM JUBILEE 2022 STOWUPLAND COMMEMORATIONS

This year sees the Celebration of HM the Queen's Platinum Jubilee.

On **Thursday 2nd June** our plan is to hold a **Jubilee picnic** on the village green around the beacon where parishioners can bring their own food, drink and picnic. The afternoon will commence at **4.00pm** until late.

We will be providing crafts for children to decorate a crown with a Grand parade later that day. Prizes for the best dressed crown.

The **Cricket Club** will be arranging games for the children, a face painter will be joining us to decorate both young and a little older faces.

We hope to have an inflatable assault course and a coffee van for those of us in need of a cuppa.

Stowupland History Group will have a display of the last 75 years of Stowupland. Available to view in the URC Church Hall from 2.30 – 6.00pm

The **beacon** will be lit at 9.15pm when at **9.45pm** we will join more than 1,500 beacons being lit throughout the United Kingdom to pay tribute to the Queen's long and selfless service.

On the **Friday 3rd, Saturday 4th and Sunday 5th June** Holy Trinity Church will be holding their annual flower festival and Craft Fair aptly titled **"70 Glorious Years"**

On **Sunday 5th June** there will be a service of thanksgiving run jointly with Holy Trinity and the URC Church.

Our aim is to **bring the community** together to celebrate Her Majesty's Seventy Years on the Throne.

We are still appealing for people to come forward to help with the event.

If you would like to join the small working group, then please get in touch. Please contact Claire Pizzey Parish Clerk
(parishclerk@stowuplandpc.co.uk)

Monarch, Sovereign, Royal, Hereditary Ruler, Queen

This year Her Majesty the Queen has become the first British Monarch to celebrate a Platinum Jubilee, after 70 years of service to her country.

God bless you Ma'am

On 6th Feb.in '52,
When King George passed away,
The future Queen returned to us,
She was on holiday.



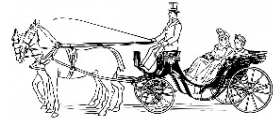
Together, with her husband, Phil,
After sad news on the 'phone,
They flew back home from Kenya,
So she could take the throne.



This year she's has been our Monarch,
For seventy years, been great.
She's done it so successfully,
As U.K.s Head of State.

Although already she was Queen,
It took a lot of time,
To plan a coronation,
And make this poem rhyme.

On the 2nd of June in '53,
I was alive to say,
"I spied the London action,
The Royals on display".



Our family sat and watched the box,
The news, but not at ten,
We sat and drank our cups of tea,
It's what we did back then.



Not everyone had their own T.V.,
So, friends came in to view,
And yes, I think you've guessed it,
We had another brew.

Let's celebrate her Jubilee,
With a picnic on the green,
And who knows we might even sing,
"God save our Gracious Queen".



The Really Lovely Poetry Company R.R.G.

STOWUPLAND COLLECTION POINT

If any individual, school, church or business would like to become a collection point for the Eco Future Group in Stowupland please contact Stowmarket Eco Future Group directly. Contact details can be found in their article.

Please don't leave your recycling on the editor's doorstep as I'm unable to help with this.

Ed.

Choose Refills

Mobile Eco Refill Shop

We are coming to Stowupland on the first Thursday of each month from 2-4pm so pop and see us at the village hall

Simply bring your empty bottles along and we can refill or purchase prefilled reusable bottles ready for next time.

Try our zero and low waste refilling station for eco-friendly and vegan household cleaning and laundry liquids and hair and body products.

Buy what you need without unnecessary packaging.

For orders and more information visit :

www.chooserefills.co.uk

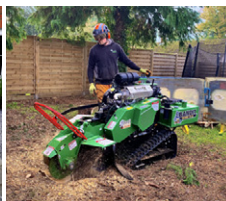
Free Delivery for orders over £10



W. Jarvis & Son
Tree Services
& Landscapes



Scan me!



All aspects of tree surgery, landscaping and fencing undertaken.

Fully insured, 24hr callout, council approved contractor with over 40 years in the industry.

Call for a free estimate & advice

T: 01359 241958

M: 07891 208710 • 07850 046504

Visit our website for information about our company and the work we do
www.wjarvistreeservices.co.uk

DIAMOND JUBILEE CHICKEN

Ingredients

- 1 large chicken (about 2.25kg/5lb)
- 1 tsp turmeric
- 2 tsp ground ginger
- 2 tsp ground cumin
- 2 tsp ground cinnamon
- 3 tbsps sunflower oil
- 500g Greek yogurt
- 4 tbsps mayonnaise
- ¼ tsp cayenne pepper
- 4 tsp pomegranate molasses or balsamic glaze, plus extra to serve
- 2 green-skinned English apples, cored and diced
- 200g toasted walnut piece
- bunch flat-leaf parsley, chopped
- 100g/4oz pomegranate seeds



Method

STEP 1

Heat oven to 160C/140C fan/gas 3. Sit the chicken in a large roasting tin. Mix together the turmeric, 1 tsp ginger, 1 tsp cumin, 1 tsp cinnamon and oil, then brush all over the chicken, making sure all of the spiced oil is used. Season well. Pour 250ml water into the bottom of the tin, cover with foil and seal around the edges. Put in the oven and cook for 2 hrs.

STEP 2

Remove the foil and increase oven to 220C/200C fan/gas 7. Cook for a further 30 mins until the chicken is cooked through. Remove from the oven and leave until cool enough to handle. Strip the chicken meat from the carcass in chunky pieces and set aside.

STEP 3

To make the salad, mix together the yogurt, mayonnaise, remaining 1 tsp each of ginger, cumin and cinnamon, cayenne pepper and pomegranate molasses or balsamic glaze. Add the chicken pieces, apples, all but a handful of the walnuts and parsley, and season.

STEP 4

Spoon the salad onto a large plate. To serve, drizzle with a little pomegranate molasses or balsamic glaze and scatter over the pomegranate seeds, remaining walnuts and chopped parsley.

Courtesy of BBCGoodFood

The Queen's Platinum Jubilee Beacon Tart

Ingredients representing all 4 nations of the UK
England: Cheddar Cheese **Northern Ireland:** Potatoes
Scotland: Smoked Salmon **Wales:** Leek
 Average cost of ingredients per tart, between £3.75 & £5.00
The following quantities will serve TEN people.

Pasty

140 g (5 oz) plain flour
 35 g (1 ¼ oz) margarine fat
 35 g (1 ¼ oz) vegetable fat
 About 1 ½ tablespoons cold water
Or use ready-made shortcrust pastry
 * 20 cm (8") loose-bottom flan tin
 * baking beans

Filling

100 g (4 oz) Smoked salmon (trimmings or chopped small)
 50 g (2 oz) leek
 100g (4 oz) cooked potatoes
 70g (2 ½ oz) Cheddar cheese (grated)
 200 ml (7 fl oz) single cream
 2 large eggs (beaten)
 1 tablespoon fresh chopped parsley
 Black pepper
 Butter or oil

1. To make pastry - place flour in bowl add the fats and rub in lightly with fingertips until mixture resembles fine breadcrumbs. Add enough cold water to bind to a soft dough, knead briefly and shape in to a ball. Wrap and chill for 30 minutes.
2. Roll out the pastry and use to line the flan tin. Prick the bottom of the pastry with a fork. Line pastry shell with foil and fill with baking beans. Place tin on a heated baking tray and bake in preheated oven at 200°C Fan. (Gas 7) for 10 minutes, remove foil and baking beans, return to the oven for a further 10 minutes.
3. Reduce oven temperature to 160°C Fan (Gas 4)
4. Scrub potatoes and place in a pan of lightly salted boiling water to cook for 15 minutes. Drain and allow to cool before removing the skin and then slicing thinly.



5. Finely chop leek. Heat a little butter or oil in a small frying pan, add chopped leek to the pan and cook over a low to moderate heat, stirring occasionally, for about 10 minutes until soft but not coloured - allow to cool.
6. Mix together cream, beaten eggs, chopped parsley and plenty of ground black pepper. Layer filling in pastry case; spread smoked salmon over base of tart followed by cooked leek and then 50 g (2 oz) grated cheese (keeping remaining 20g (¾ oz) to sprinkle on top). Top with thinly sliced cooked potatoes. Sprinkle remaining grated cheese over the top then gently pour cream and egg mixture in to the tart.
7. Bake in oven for 30 - 35 minutes until filling is set and golden. Serve cold.

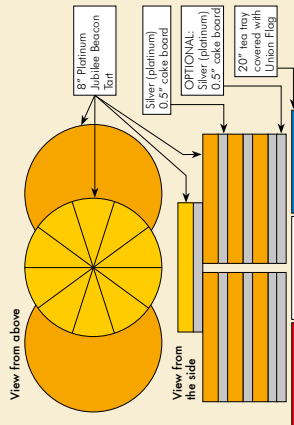
NB These quantities also make 18 small tarts using 8cm (3 ¼") plain round cutter and lining party tins. When making small tarts there is no need to blind bake the cases first. Bake small tarts at 160°C Fan (Gas 4) for about 30 minutes until filling is set and golden.

Guide to serving

A construction of seven Platinum Jubilee Beacon Tarts as shown below will serve 70 guests.
 Each tart represents a Decade of Her Majesty's reign.
 Each slice represents a Year of Her Majesty's reign.
 You will need: 7 x 8" freshly made Platinum Jubilee Beacon Tarts as per recipe
 7 x 8" x 0.5" silver (platinum) cake boards

1 x 20" tea tray
 2 or 3 Union Flag napkins
 Optional: 2 additional silver (platinum) cake boards if greater elevation is required
 Additional napkins to hand to guests with their slice of tart

Create two stacks of 3 x 8" tarts, each on a silver (platinum) cake board, and place side by side on a 20" rectangular tray covered with Union Flag napkins. Place a further tart centrally on top (7 tarts in total).



The above produces a 6" high stack of tarts. If further elevation is needed an additional cake board could be placed under each stack of 3 tarts.

Once the top tart has been ceremonially cut, remove it from the stack and set to one side to cut into ten slices.
 This will avoid crushing the tarts underneath.
 Carry out the same process for each subsequent tart, remembering to remove each one from the stack before cutting into ten. The slices can then be handed round to guests from their individual boards accompanied by napkins if desired.



JUBILEE CAKE

Ingredients

175g golden caster sugar
175g butter (ideally Welsh), softened
4 large British eggs, separated
100g self-raising flour
1 tsp baking powder
100g ground almonds
a few drops of almond extract
125g punnet raspberry, Scottish if you can get them



For the filling

227g Cornish clotted cream
125g punnet raspberry

For the decoration

2 pink roses
50g - 85g golden caster sugar
1 egg white, lightly beaten to a froth
100ml icing sugar

Method

STEP 1

Make the frosted rose petals the day before. Separate the petals and spread the caster sugar over a plate. Holding one petal at a time, lightly paint both sides with egg white. Spoon sugar over it, then using tweezers, shake off the excess. Dry on baking parchment for a day.

STEP 2

Preheat the oven to 180C/gas 4/fan 160C. Butter two 20cm/8in round sandwich tins and line their bases with baking parchment. Tip the sugar into a mixing bowl and add the softened butter. Beat for a minute or so until pale and fluffy, then beat in the egg yolks.

STEP 3

Sift the flour and baking powder over the cake mixture. Fold in as lightly as you can using a large metal spoon, then fold in the almonds and extract. Stop folding as soon as the flour traces have gone.

STEP 4

Whisk the egg whites until they just hold their shape. Gently fold a third of the egg white into the cake mix, using the whisk. Repeat with another third, then the final third. Take care not to over-mix and lose the lightness of the egg whites.

STEP 5

Lightly fold in the raspberries. Divide between the prepared tins and level the mixture using a round-bladed knife. Bake for 30-35 minutes. Cool in the tin for 5 minutes, then turn out, peel off the lining paper and leave to cool completely.

STEP 6

Set one cake on a serving plate or cake stand. Spoon the cream on to the cake with a dessertspoon. Scatter the raspberries over and put the other cake on top. Blend the icing sugar with 1-1½ tbsp cold water until it is smooth and coats the back of a spoon thinly. Drizzle the icing over the cake. Scatter the rose petals over and around the cake, dust with icing sugar and serve.

Courtesy of BBCGoodFood

<h2>"I'm in PAIN!"</h2> <p>Can Chiropractic help me?</p>	 <p>Stowmarket Chiropractic <i>caring for you is our business.</i></p>
<p>Your initial visit will include:</p> <ul style="list-style-type: none">• A consultation with the Chiropractor• A thorough spinal examination with Orthopaedic & Neurological tests• A confidential report of findings• An explanation of our treatment programme if we determine Chiropractic can help you• Referral to the appropriate specialist if we determine Chiropractic cannot help you <p>Call TODAY for an appointment</p> <p>01449 612620</p> <p>www.abbey-chiropractic.com</p>	<div><p>Marie Broodryk M.Tech.Chiro., CCFC, MRCC</p></div> <div><p>Michael Bailey M.Chiro</p></div>
<p>Registered with The GCC, RCC, SCA & BCA</p>	<p>7 Stowupland Road, Stowmarket, IP14 5AG</p>

Did you know?



British Beauty Salon is located above The Crown, Stowupland.

It's time to escape the everyday and treat yourself. Located above an idyllic country pub, when you enter our salon you're transported into a new world, where peace and tranquillity are ready and waiting to welcome you... with a glass of bubbles if you wish!



A quaint & character filled salon!

Suffolk's unique 'spa with a bar', our beauty salon gets its nickname due to its position above The Crown, Stowupland. We've taken every care to design the space so that when you step inside the salon, you're transported to a relaxing and tranquil oasis; the most idyllic place to unwind and take some time for yourself.



Why visit British Beauty?

- Bespoke high quality service
- Natural product ingredients
- Eco-friendly salon
- Educating
- Cruelty free products
- Partnering with British Brands



Want to know more?

Scan the QR code to see our website & get yourself or a loved one booked in for some well deserved me-time.



<https://british-beauty.co.uk>

IMPORTANT CONTACTS

Citizens Advice

www.midsuffolkcab.org.uk - 01449 676060
or 01449 676280 - 5 Milton Road South,
Stowmarket, IP14 1EZ

Doctor

Emergency - 999
NHS Direct - 111
Combs Ford - 01449 678333
Stowhealth - 01449 776000

Emergency Numbers

Power Cut - 0800 31 63 105
Gas Leak - 0800 111 999
Water Leak - 0800 771 881

Good Neighbour Scheme

HELPLINE: 07591 539621

Member of Parliament

Jo Churchill - jo.churchill.mp@parliament.uk -
Constituency Office, 10 Hatter Street,
Bury St Edmunds, IP33 1LZ - 01284 752311
House of Commons - 02072 198487
<https://www.jochurchill.org.uk/>

Mid Suffolk District Council

www.midsuffolk.gov.uk
Keith Welham - keith.welham@midsuffolk.gov.uk -
01449 673185
Rachel Eburne - rachel.eburne@midsuffolk.gov.uk -
01449 673311

Police

<http://www.suffolk.police.uk/contact-us>
<https://www.suffolk.police.uk/advice>

Police Safer Neighbourhood Team

PC 14443 Stefan Henriksen - Police Station,
Violet Hill Road, Stowmarket, IP14 1NJ
stefan.henriksen@suffolk.pnn.police.uk - Phone: 101

Samaritans – 116 123

Stowupland Village Website

www.stowupland.com

Parish Council Website

www.stowupland.suffolk.cloud

Suffolk County Council

www.suffolk.gov.uk 01449 673185
Keith Welham - Keith.Welham@suffolk.gov.uk
SCC – General Contact No. 0345 606 6067

Schools

Stowupland High School -
www.stowuplandhighschool.co.uk - 01449 674827
Freeman Community Primary School -
www.freeman.suffolk.sch.uk - 01449 612067

Vets

Cedarwood - 01449 676966
Stowe Vets - 01449 613130

DIARY DATES

MAY

SUN 1	10.00 - 4.30 Village Hall	Craft Fayre
SUN 1	10 am - 1.00 pm Bowls Club	Bowls Open Weekend
MON 2	10.30 meet at "Crowstone"	Spring walk followed by refreshments
WED 4	9.30 am Village Hall	Baby & Toddler Group
WED 4	2 - 4 pm Village Hall car park	Mobile post office
WED 4	7.30 pm Village Hall	Local History Group (see Local History page for talk)
THURS 5	1.45 pm Bowls Club	Roll-up
THURS 5	2 - 4 pm Village Hall car park	Choose Refills pop-up shop
THURS 5	7.30 pm Village Hall	Short mat bowls
THURS 5	7.30 pm URC Church Hall	Annual Parish Council meeting
FRI 6	7.30 pm Cricket Club	Quiz night
MON 9	1.45 pm Bowls Club	Roll-up
MON 9	evening Village Hall	Dance club
WED 11	9.30 am Village Hall	Baby & Toddler Group
WED 11	2 - 4 pm Village Hall car park	Mobile post office
THURS 12	1.45 pm Bowls Club	Roll-up
THURS 12	7.30 pm Village Hall	Short mat bowls
SAT 14	1.45 pm Bowls Club	Roll-up
MON 16	9.30 am Village Hall	Baby & Toddler Group
MON 16	7.30 pm URC meeting room	Stowupland Wildflower and Biodiversity Group
TUES 17	9.30 Jubilee Court 9.50 Green	Mobile Library
WED 18	2 - 4 pm Village Hall car park	Mobile post office
WED 18	7.30 pm Village Hall	Annual Parish meeting
THURS 19	1.45 pm Bowls Club	Roll-up
THURS 19	7.30 pm Village Hall	Short mat bowls

SAT 21	1.45 pm Bowls Club	Roll-up
SUN 22	7.30 pm Village Hall	Country & Western Music Club - Countryholic
MON 23	evening Village Hall	Dance Club
MON 23	7.00 visit to Gallowsfield Wood, Haughley	– ring 01449 673185 for details
WED 25	9.30 am Village Hall	Baby & toddler group
WED 25	2 - 4 pm Village Hall car park	Mobile post office
THURS 26	1.45 pm Bowls Club	Roll-up
THURS 26	7.30 pm Village Hall	Short mat bowls
FRI 27	10 am - 12 URC Chapel	Coffee morning
SAT 28	1.45 pm Bowls Club	Roll-up
SUN 29	7.30 pm Village Hall	Country and Western Music Club - Roots and Wings
MON 30	evening Village Hall	Dance Club

JUNE

WED 1	2 - 4 pm Village Hall car park	Mobile post office
WED 1	9.30 am Village Hall	Baby and Toddler group
WED 1	9.30 am Village Hall.	Debutots 'Family Story Play' Workshop
	For more information, https://debutots.co.uk/ipswich-stowmarket-burystedmunds	
WED 1	7.30 Village Hall	Local History Group
THURS 2	2 - 4 pm Village Hall car park	Choose Refills pop-up shop
THURS 2	7.30 pm Village Hall	Short mat bowls
2 - 5	Platinum Jubilee events	– full details in June Telstar
3 - 5	Holy Trinity Church	Flower Festival
SAT 4	Bowls Club	Jubilee Cup

LOOKING AHEAD

SUN 26 June	Yard Sale
SUN 10 July	Stowupland Village Open Gardens

MSDC General Contact No. 0300 1234000

Mobile Library - 07721 879855

Parish Council

Sally Reeves – Chairman - 01449 745739
sallyreeves@stowuplandpc.co.uk

Laura Beeson - 07918 808387

laurabeeson@stowuplandpc.co.uk

Donna Bridges – 07736 348335

donnabridges@stowuplandpc.co.uk

John Hayward – 01449 674717

johnhayward@stowuplandpc.co.uk

Laura Johnson - 07826 851030

laurajohnson@stowuplandpc.co.uk

Debra Melhuish -07979125904

debramelhuish@stowuplandpc.co.uk

Paula Murton - 07906 677817

paulamurton@stowuplandpc.co.uk

Kevin Stevens – 07747 605042

kevinstevens@stowuplandpc.co.uk

Ray Studd - 01449 676606

raystudd@stowuplandpc.co.uk

Jerry Voden - 01449 703717

jerryvoden@stowuplandpc.co.uk

Clerk to the Parish Council – Claire Pizzey

parishclerk@stowuplandpc.co.uk - 01449 677005

2 Broomspath Road, IP14 4DB

Parish Council Minutes of meetings and agendas are available on the Parish Council Website

www.stowupland.suffolk.cloud

Village Hall Bookings

Lisa Tunbridge - Phone - 07862740830

stowuplandvillagehallbookings@gmail.com

Village Clubs

Baby and Toddler Group -

Kelly Woolhough - 07776 206430

Book Group - Patricia Hodgkins - 01449 672127

Stowupland Bowls Club - Graham Newman -

01359 240846

Community Events - Keith Welham - 01449 673185

Country and Western - Pat Murphy - 01449 677405

Dance Club - Mary Durham - 01449 672601

Local History Group - Jerry Voden - 07951 086383

Short Mat Bowls – Pam Fayers – 07713026696

Sports and Social Club - Mark Dye - 07799 662491

Stowupland Cricket Club

www.stowuplandcricketclub.co.uk/

Stowupland Falcons Football Club -

stowuplandfalconsfc.co.uk

Stowupland Sports Centre -

info@stowuplandsportscentre.co.uk - 01449 672531

Stowupland Wildflower & Biodiversity Group –

kay.telstar@gmail.com

Stowmarket Wildlife Group - John Thompson -

swtstowmarket@gmail.com - 01449 676471

BUNTING BISCUITS

Ingredients

350g plain flour, plus a little extra for rolling
100g cold butter, diced
1 tsp bicarbonate of soda
140g light soft brown sugar
1 large egg
75g golden syrup
2 tsp vanilla extract

To decorate

1kg pack ready-to-roll icing
few food colourings and writing icing pens, in your favourite colours
icing sugar, for rolling



Method

STEP 1

Put the flour, butter, bicarb and sugar in a food processor, whizz until you can't see any lumps of butter, then tip into a mixing bowl. Whisk the egg, syrup and vanilla together, then stir into the bowl with a wooden spoon. Using your hands, knead together into a smooth dough.

STEP 2

Heat oven to 200C/180C fan/gas 6. Cut a triangle template from card the size you want the bunting to be. Roll out dough on a lightly floured surface. Use template to cut out triangles – re-roll trimmings to get as many as you can. Line some baking sheets with baking parchment and lift on the biscuits. Use a pencil end to make 2 holes in the top of each one – not too close to the edge. Bake, one tray at a time, for 8-10 mins, remaking each hole when biscuits are just out and still soft. Cool. Un-iced biscuits can be frozen for up to 3 months or will keep in an airtight container for a week.

STEP 3

Divide the icing into as many colours as you want and knead in food colourings to get your desired colours. Roll out thinly on a surface lightly dusted with icing sugar and use your template to cut out icing triangles. Brush the backs of the icing with a little water and stick onto the biscuits – making holes in the icing to match the biscuits as you go. Cut out small circles from leftover icing, brush backs with water and stick onto some of the biscuits. Decorate with icing pens, if you wish, then carefully thread through ribbon or string and hang up your treats.

Recipe courtesy of BBCGoodFood

As the Spring Term comes to an end, we can't believe how fast this year has gone, although putting together this article and seeing how much we have done over the last few weeks, it's not surprising time has flown!

Victorian Day

Our Year 1 class enjoyed a Victorian Day recently. The children all came to school dressed as Victorian children, practised their handwriting with chalk and slates, recited the times tables, ate gruel and made and tried out Victorian games. They even tried the dunce's hat! Here are the teachers and children in their fantastic costumes.



Easter Church Service

On the last day of term, the children attended the Easter Service at the Holy Trinity church. It was nice we were all able to attend the service (another sign of returning to normality). The children did very well reading their parts out to the rest of the school and everyone enjoyed singing along to the songs. Thank you to Rev Brin and the Holy Trinity Church for having us. Years



1 and 2 also made Easter Bunny ears to wear during their Easter song. Here are some Cherry Tree class bunnies wearing their ears, practising their song before the service.

EGGperiments in Maple Class

Year 2 tried an EGGciting EGGsperiment at the end of term, using their knowledge of materials and their properties to protect a chocolate Easter egg from an egg drop. Here is one of the boxes the children made to protect the eggs and Miss Garnham about to test it! Thankfully most of the eggs survived. Great work Maple class!





Sporting Achievements

We have some fantastic sporting achievements this term, both within and outside of school. In Year 4, Effy won four golds for gymnastics pieces she performed at Pipers Vale in Ipswich, and Alex won medals for coming 2nd and 3rd in the freestyle 50 metres and 50m backstroke at Stowmarket Swimming Club.



As a school we recently competed in a virtual gymnastics competition which included a group floor routine and vault and was judged by Stowmarket Gymnastics Club. Competing with six other schools, Freeman came second in the Year 1/2 competition, first in the Year 3/4 competition and fourth in the Year 5/6 competition. This was an amazing achievement seeing as they'd only been together as a team for half a term. Here are the Year 3/4s with their trophy. Well done to everyone who participated!

Skara Brae Homes

In Year 3 the children have been learning about Skara Brae, one of the best-preserved Neolithic settlements in Western Europe. As part of a History/English experience day, they made some fantastic replicas of Skara Brae homes using junk modelling. It was great seeing them bring their learning to life.



Biscuit competition

Year 4 recently designed biscuits as part of their Design and Technology lessons with staff members judging the entries. Every group did a brilliant job of designing their biscuit including the packaging and coming up with a name.

They also had to cook their biscuit which they all enjoyed, especially quality testing the finished products!



And finally

We are very sad to hear Kay is retiring as editor from the Telstar and would like to thank her for inviting us to get involved with the Telstar and appreciate her patience over the last few months! We wish her all the best in her retirement.

'From tiny acorns do mighty oaks grow'

JJ'S Waste Services

- All Types Of Rubbish Cleared
- End Of Tenancy
- Garden/Garage
- Office Clearance
- All Types Of Scrap Metal Collected

FULLY LICENCED

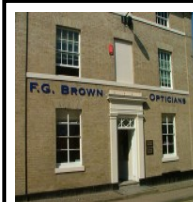
Call Us On: 07912 172826

www.suffolkwasteremoval.co.uk
johnjames1970@icloud.com

**L
E
T
S

G
E
T

W
A
S
T
E
D**



F. G. BROWN – OPTICIANS
Denmark House, 41 Bury Street,
Stowmarket.
Tel:- 01449 612812/674030

As independent opticians we offer a more personalised eyecare service that you can trust for all the family including:-

Optomap retinal examination
Colorimetry

A wide range of competitively priced frames
and spectacle lenses
Contact lenses

Prescription and non-prescription sunglasses

Your sight care is our priority

Debutots®

Imagination takes you everywhere...

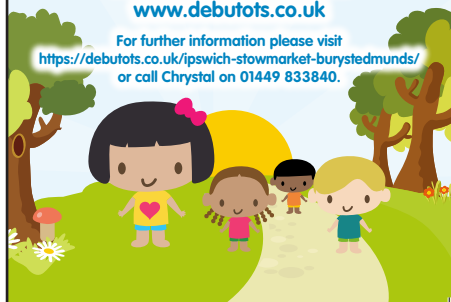
Interactive Storytelling and Dramatic Play Classes

6 months - 7 years

Split into appropriate age groups, Debutots is a progressive curriculum of classes that promote children's self-confidence; stretch their imaginations and develop their language and communication skills.

enquiries@debutots.co.uk
www.debutots.co.uk

For further information please visit
<https://debutots.co.uk/ipswich-stowmarket-burystedmunds/>
or call Chrystal on 01449 833840.



C.M. Hayward

Electrical Services

Lothlorien, Church Road,
Stowupland, Stowmarket,
Suffolk. IP14 4BH

01449 678213



ANNIVERSARY • 1980-2020

**Gipping Press are proud
to print this publication**

Tel: 01449 721599

Email: enquiries@gippingpress.co.uk

www.gippingpress.co.uk

DESIGN | PRINT | PROMOTION | DISPLAYS | SIGNAGE | MAILING

MP JO CHURCHILL ATTENDS OFFICIAL OPENING OF JOHN MILTON SIXTH FORM AT STOWUPLAND HIGH SCHOOL

MP Jo Churchill was among the guests at the official opening of a Suffolk high school's new Sixth Form block.

Students have been using the state-of-the-art facilities at John Milton Sixth Form at Stowupland High School, which is part of the John Milton Academy Trust, since the summer.

However, due to Covid-19 restrictions – and later storms Eunice and Dudley – the official opening had to be pushed back.

Mrs Churchill said she was impressed by the Sixth Form and was delighted to officially open the building.

She said: "I think this is a fantastic opportunity for our students in Mid Suffolk to access first class education and allow them to achieve the potential we know they all have.

"It's a new building, a new beginning, and I look forward to great things being delivered by the John Milton Academy Trust and its teachers for the young people of Suffolk."

Following speeches by Sixth Form Director Ashley Hailstone, John Milton Academy Trust Chair Alan Ridealgh and Mrs Churchill, invited guests were given a guided tour of the building by students.

Mrs Churchill then joined a politics class, taking questions from students.

Mr Hailstone said: "This new Sixth Form block gives our students the opportunity to learn in a purpose-built, state-of-the-art building with incredible facilities.

"Not only does the new building have all the latest technology, its large, open common room gives the Sixth Form a real sense of community.

"It is brilliant to finally celebrate its official opening after having to delay due to the coronavirus and storms Eunice and Dudley – it has been a long wait.

"We are very proud of the new Sixth Form building and would love to show you around."

Discussions for the Sixth Form block at Stowupland High School, began in 2017 - with designs for the block going out for consultation in mid-2019.

Suffolk County Council's Development and Regulation Committee gave the green light to the plans in October 2019 and building work began in December 2019.

As well as the new Sixth Form building, the plans included significant upgrades to the school's parking facilities and bus park.

Work on the project was completed in early 2021 and students began using the block in the spring of last year.

Karen Grimes, CEO of the John Milton Academy Trust, added: "This new Sixth Form block demonstrates the Trust's civic responsibility and its commitment to the local area, its young people and their futures.

"I am delighted the School has finally been able to celebrate the opening of the new Sixth Form building officially, and we look forward to welcoming many more students to our Sixth Form in September."

The school is hosting Tea and Tour events on Friday mornings, from 10am to 11.30am, giving people the chance to look around the new building.

For more information on John Milton Sixth Form at Stowupland High School and to book a Tea and Tour event place, see www.stowuplandhighschool.co.uk



Reduce your Accountancy costs

Call Sarah Place Accountants

Professional efficient Accountants with over 15 years experience

Accounts • Book-keeping • Payroll • Sage

VAT & Tax Returns

01284 747 139

SAM'S CHAT

Hello everyone,

In the last Telstar I wrote that I would have my first proper birthday since 2019 as the last ones were in lockdown. Sadly a few days before my birthday both me and Jessica got covid. Mummy and Daddy never got it though luckily. I was really upset as I wanted to be with my friends. I still had a good day at home with my family and we are doing my birthday activities in the Easter holidays instead of on my birthday.

We also couldn't do a birthday meal and Mother's Day meal with my nanna and nanny in case they got covid from us. We had to do that a week later. It was nice to see them.

I really like going to scouts. In the last few weeks, I made a beehive hotel, a pasta tower, a curry and learnt how to change a car tyre. I painted chicks hatching out of eggs for Easter as well.

For the beehive, I got a plastic bottle and some bamboo sticks. First, I cut off the top and bottom of the plastic bottle then chopped up the bamboo sticks, and after that I crammed all the bamboo into the middle of the plastic bottle then hung it up on a tree. I am not sure if any bees have been in my hotel yet. We did get a big, huge bumble bee in our house which Mummy had to chase out.

For the spaghetti tower we had marshmallows and uncooked spaghetti and tried to stab the spaghetti into the marshmallows but whatever me and the rest of my group tried it didn't work.

The biodiversity group held a family day at the village hall. We went there before karate. Jessica made a bird house whilst I made a teapot nester. I used a block of wood, a teapot and some wire. First, I put the teapot on the wood then put the wire through the handle of the teapot and at the front and put it through holes in the wood. When we finished, we noticed we still had a bit of time till we needed to go to karate, so we assembled bug houses and planted flowers. We are going to put all these in our garden. Some of the flowers we helped plant on the bank are growing now.

Two magpies have made a massive nest at the top of one of our trees out of reach of our cats. I always see the cats looking up and trying to get them from the grass. We will have to put our bird house and teapot nester up high too.

It is Easter holidays now so see you next month!

Sam



Citizens Advice Mid Suffolk are looking for volunteers to provide vital support in the community – can you help?

The charity supports people all over Mid Suffolk from their office in Stowmarket, providing free, confidential, independent and impartial advice. Demand for the charity's services has continued to increase, and the wonderful team of volunteers are paramount to the help Citizens Advice provide.

The team are seeking volunteers from all kinds of backgrounds to support local people with their problems. No experience is necessary as full training will be provided.

Citizens Advice volunteers come from all walks of life and choose to volunteer for a variety of reasons. Volunteers are often looking for ways to make use of their skills or to gain valuable experience and make use of the fantastic training. They also enjoy the opportunity to meet different people and be part of a friendly, welcoming team of existing volunteers. They find it rewarding to support local people and make a difference to their lives.

Current volunteers at Citizens Advice Mid Suffolk said:

"I wanted to help in some meaningful way in the local community. Volunteering at Citizens Advice has made me feel that I am doing something useful. After three years of retirement, it is nice to have a form of regular commitment and I enjoy interacting with the others in the office."

"When my youngest started school I had some extra time, so decided to volunteer, and haven't looked back! The team are great here, so the atmosphere is consistently very welcoming."

"I believe what we do is important to the community as evidenced by the increasing demand. I like to volunteer as it keeps my brain active, and the camaraderie and social interaction is enjoyable as well as important."

Interested in volunteering? Citizens Advice Mid Suffolk would love to hear from you! Go to midsuffolkcab.org.uk/volunteer or call 01449 676060 for an informal chat.

STOWUPLAND CRICKET CLUB



By the time this hits the press the 2022 season will have started, and both of our senior teams will have played their first fixtures. An excellent turnout was seen at the annual cricket force event on Sunday 10th April. The weather was kind as the sheds were tidied, sight screens were painted, and the pitch was prepared.

JUNIOR TRAINING

With indoor training complete, our Juniors moved outside from Friday 22nd April, (6 - 7.30pm). All Stars and Dynamo sessions are being run a little later in the year, starting on 17th June from 5.45 - 6.45. From 17th June the usual junior coaching will run from 7 - 8.30pm.

QUIZ NIGHTS

Monthly quiz nights returned on Friday 1st April with 8 teams in attendance. Please see our social media platforms for details about future events and to book a team.

For further information about Stowupland Cricket Club or any of the above please email Melanie Blanchard - mcblanch@hotmail.co.uk

STOWUPLAND BOWLS CLUB

The Bowls Green will be in full swing when you read this article. We opened on 9th April and it was well attended, with 5 new members, given the mixed weather. Roll-ups are held on Thursday and Saturday afternoons at 1.45pm. Anyone wishing to see if bowls is their sport, please come along; it is free to try, and we have the equipment so no expense.

We play in the Stowmarket League on a Monday, Tuesday and Wednesday evening and non-members may come and watch. You might like what you see and want to try; a fixture list is in the glass paper box by the main gate.

April 30th and May 1st is Bowls Open Weekend: open from 12.00 to 16.00 Saturday and 10.00 to 13.00 Sunday for the general public to come and try their hand.

I will try and get the results printed each month so you can see how the club is performing.

That's about it for this month,
Frank Boxall (Chairman).

STOWUPLAND VILLAGE HALL

– LOTS OF CHANGES

Lots has been happening at your Village Hall so we thought you would appreciate a bit of an update.

First, we have a new Booking Secretary. Her name is Lisa Tunbridge and she lives in Stowupland. She replaces Colin Booker who we thank for his service and wish him well. Lisa's contact details are the same as for Colin - 07862 740830 or email her on stowuplandvillagehallbookings@gmail.com.

We are introducing a new website for the Village Hall which includes the ability to book online. The website can be viewed here: <https://hallbookingonline.com/stowupland> so check it out. We are still moving some of our existing bookings over to the site so it is not 100% accurate so if you make a booking, we will check it for you and confirm the slot is available. You can still make bookings via the Booking Secretary but all bookings will be shown online so people can book direct if they prefer.

Elsewhere in Telstar you may have noticed the advert for a jazz evening at the Village Hall on Friday 27th May. Doors open at 7:30 for a start at 8pm. Ian Millar and Dominic Spencer are coming all the way from Scotland for the event so please do try to come along and support the event. This is the first time we have tried such an event so hope it is well supported – not least because the more people who attend the more money the Village Hall earns to support our plans and run the hall. Entry is only £10 and under 16s are free. The bar will be open. You can pay on the door or buy a ticket in advance just in case they sell out - call 07857 547983.

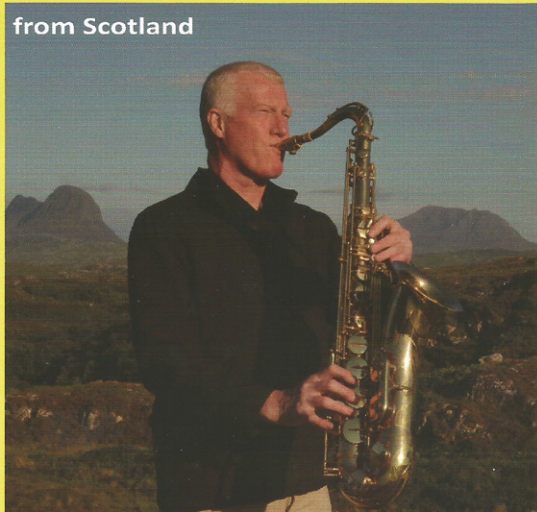
Finally, you may be wondering what is happening about the redevelopment of the Village Hall. Things are moving forward and we have appointed an architect who is currently drawing up detailed plans based on the previous feedback we collected at our public event on 21 June 2021. We expect revised plans any day and will organise another public meeting to share those plans and seek your views in the next few months. Once we have agreed plans, we will need to seek planning permission and funding to undertake the work. As a reminder the redevelopment will include:

- A new Pavilion for the Bowls Club.
- New and expanded changing rooms for the Sports Clubs.
- More storage in the Village Hall for chairs, tables and clubs.
- Improved toilets and kitchen facilities.
- Improved bar for the Social Club and Village Hall.
- Redecorating and refurbishing the Village Hall and Social Club areas.
- New improved outdoor storage facilities for the Sports clubs replacing the current mixture of sheds and storage compound.
- Completion of the Safely to Schools route across the Village Hall land filling in the missing link from the High School to the Primary School.

Jazz in the Village

"Very cool music played in a magical atmosphere - this will appeal to jazz novices as well as hardcore enthusiasts." Three Weeks Magazine

from Scotland



Ian Millar
saxophone
Dominic Spencer
piano

"Beautiful soaring magic! I was blown away by your show, just breathtaking!"

"...expect warm, intelligent, reflective, human music..."

STOWUPLAND VILLAGE HALL



3 Church Rd, Stowupland, Stowmarket IP14 4BG

Accompanied
under 16s free

Fri 27th May 8pm £10

ticket sales number- 07857 547983



Ian Millar & Dominic Spencer
accessible, melodic jazz

www.millarandspencer.co.uk

THE ANNUAL PARISH MEETING

The Annual Parish Meeting is not a meeting of the Parish Council. It is a meeting of the electors of the parish and should take place between 1st March and 1st June each year and is chaired by the Chair of the Parish Council if they are present.

The Annual Parish Meeting is an opportunity for local clubs, charities and organisations to report to the parishioners on their activities throughout the year and for the Parish Council Chairman, the County Councillor, the District Councillor and the local Police to offer their reports.

The meeting should also give the electors of the parish an opportunity to raise issues of importance to them. Decisions made by the meeting are not binding on the parish council, but good practice suggests they should be given consideration at the next parish council meeting.

The Stowupland Annual Parish Meeting is being held on Wednesday 18th May 2022 in the Village Hall. Refreshments will be available from 7.00pm with the meeting starting at 7.30pm

Everyone is welcome.

Claire Pizzey
Clerk to the Parish
parishclerk@stowuplandpc.co.uk

STOWUPLAND GARAGE AND YARD SALE

Sunday 26th June

Sell all those things you don't need anymore

We do lots of advertising

Easier and cheaper than a boot sale

If you would like to be included please phone:

Dave and Julia

01449675184 evenings only



U.R.C CHAPEL

NEWS

With the increasing population around Stowupland, what better time is there than Spring to make new friends. Why not join us at one of our Coffee Mornings on the last Friday of each month. The next one is on **Friday 27th May 2022 10am to 12noon**. Also, we are always seeking to widen our congregation, please see below for details of our Sunday Services:-

Services are held at the URC Chapel, Church Road, Stowupland each Sunday at 10.30am and you are cordially invited to join us in our worship. A warm welcome awaits you.

The Speakers for May are as follows:

01 May	Stephen Horrex
08 May	Rev Robert Sheard
15 May	Nigel Crisp
22 May	Allison Smith
29 May	Andrew High

Joyce Gardiner

MINISTERS MESSAGE

Mark 16: 19

After the Lord Jesus had talked with them, he was taken up to heaven and sat at the right side of God. The disciples went and preached everywhere, and the Lord worked with them and proved that their preaching was true by the miracles that were performed.

In April we went through the ups and downs of Holy Week and the Joy of Easter Sunday, in May we celebrate Ascension Day, 26th May 2022.

The Ascension of Jesus is found in the New Testament it takes place after the resurrection, Jesus was taken up to Heaven in the presence of eleven of his apostles, occurring 40 days after the resurrection. In the biblical narrative, an angel tells the watching disciples that Jesus' second coming will take place in the same manner as his ascension. Both Luke and Mark's gospels gives us two brief descriptions of the ascension of Jesus, in Luke 24:50-53 and Mark 16:19. A more detailed account of the Ascension into the clouds is then given in the Acts of the Apostles (1:9-11).

The Ascension of Jesus is professed in the Nicene Creed and in the Apostles' Creed. The Ascension implies Jesus' humanity being taken into Heaven. The Feast of the Ascension, celebrated on the 40th day of Easter (always a Thursday), for many churches but not ours, is one of the chief feasts of the Christian year. The feast dates back to at least the late 4th century.

The Ascension is one of the five major milestones in the gospel narrative of the life of Jesus, the others being baptism, transfiguration, crucifixion, and resurrection.

It has been depicted in artwork from the 6th century, and often Ascension scenes were being depicted on domes of churches. Many Ascension scenes have two parts, an upper (Heavenly) part and a lower (earthly) part. The Ascending Jesus is often shown blessing with his right hand - directed towards the earthly group below him and signifying that he is blessing the entire Church.

In the Gospels of Mark and Luke the Ascension Story is seen as a time when the disciples are blessed, and in some ways ordained to go out and preach the good news to all. The return to Jerusalem after the Ascension ends the Gospel of Luke where it began: Jerusalem. The narrative of the Acts of the Apostles begins with the account of Jesus' appearances after his resurrection and his Ascension.

Whether we celebrate the Ascension or not, we as Christians are always being called by Christ, to preach the good news and he gives us different roles within His Church. Are we ready to respond to His call?

Yours in Christ, *Robert*

Reverend Robert Sheard Minister of the Stowmarket group of Churches. The group consists of Stowmarket, Debenham, Mendlesham, Haughley & Stowupland

COFFEE MORNING



Friday 27th May 2022
Stowupland URC Chapel
10am – 12noon
Coffee, Tea and Cakes
All welcome

Stowupland Village Hall

Excellent facilities - competitive prices



Our Village Hall is just the place for clubs and groups to meet or for special functions, such as parties, receptions and exhibitions.

There is one large room suitable for 140-300 people depending on the event. A small one seats up to 20 people. There is a well equipped kitchen, ample parking and a licensed bar, plus a new audio-visual system included in the standard hire charge.

Interested? Look on our website at www.stowupland.com/village-hall.
Call or email Colin Booker, our booking secretary to arrange a viewing or make a booking.
Tel: 07862740830. email: stowuplandvillagehallbookings@gmail.com

HOLY TRINITY CHURCH

NEWS

HOLY TRINITY CHURCH
STOWE/LELAND

Vicar : Revd Brin Singleton Tel. 770921

Churchwardens : Mrs Ann Doubtfire Tel. 770363

: Mrs Sue Hayter Tel. 613710

Email: brinsingleton@btinternet.com

<https://www.achurchnearyou.com/church/2082/benefice/>



Dear Friends,

How can we know that which awaits us, Ukraine, Europe, our nation, our households? Yet faith proclaims in Easter's Resurrection and Ascension the new dawn of hope. Creation herself, against all the trauma we continue to inflict upon her beautifies her ruin, the greening of field and hedgerow, the blooms of the meadows, the flight and song of the birds. Faith Hope and Love, the wedding bells proclaim, these sacred three, each without the other as bereft, as are the people of Ukraine, grieving for those lifetimes destroyed by one man's design of destruction and ruin. Resurrection tells us what is revealed in the face of grief, that such love as known in life yet endures beyond death, we do not stop loving those who have died, and by our living in the light of such love, we may rise, as faith's account of Ascension, as Creation's account, as the greening fields of our hearts that all may yet rise to that new dawn in faith in hope in love. Where, for those grieving, their hope is ended, we in love are to offer hope again, where faith is lost, we in love are to show our faithfulness. For the sake of Ukraine's trauma, we are to offer love in compassion, for refugee and homeland, open hearts and homes, our calling is to bear the load that we may answer their faith in us and restore hope for love's sake.

As I write, the story told in faith, at the beginning of Christ's suffering Passion, is of Mary Magdalene's gift ^{John 12.1-8}, anointing her Christ with all she had stored away for her own hope, her own fragrant perfume of costly nard. This gift, which no doubt offered her such comfort in her troubled life to visit, she freely poured out in thanksgiving for the faith hope and love Jesus' word of compassion had released in her that she should believe her new day. As Jesus had saved her life, her sacrifice of thanksgiving prefigured Jesus' own sacrifice to save ours. Saved in faith, ever to hold to His gift for us, faith hope and love.

May we be ready to offer our gift to support Ukraine, her people, all who, by Putin's merciless and cruel design, have been shadowed in grief, and bear the load in pouring out our gift.

Should we so lift up all who bear the burden of war, sharing our gift with those without resource, we can, as Mary, fill our lands with the fragrance of the new dawn, life in faith hope and love.

Pray we may see such new dawn, life anew in Jesus risen, this Easter.

Yours in Christ, *Brin*.

Rector of Haughley with Wetherden & Stowupland.

Services in May 2022

1st May	9.30am	Parish Communion
8th May	9.30am	Worship for All
15th May	9.30am	Morning Prayer
22nd May	6.30pm	Parish Communion
29th May	11.00am	Benefice Communion at Stowupland

A PRAYER:

Pour upon us, O Lord, your heavenly blessing, that we may be armed with the faith of the resurrection so as not to fear any army of people sent against us. Amen

JUBILEE FLOWER FESTIVAL 2022:

The Community Events Team from Stowupland Parish Council and Holy Trinity Church are currently planning for the celebrations of the Queen's Platinum Jubilee in June.

On Friday the 3rd, Saturday 4th and Sunday 5th, Holy Trinity Church will be the host to a Flower Festival celebrating 70 Glorious Years of Queen Elizabeth's Reign.

To all who would like to take part, creating a colourful memory of '70 Glorious Years, the Invitation is open to Individuals, Clubs, Schools, Sports, Residents, Business - in fact any that have links to Stowupland.

Mrs Ann Doubtfire, Church Warden, Holy Trinity

Telephone: 07747660813 or email : anndoubtfire1@gmail.com

FOOD BANK BOX:

If you would like to donate items for the Food Bank to help those in need of a helping hand, there is a box at the back of the church for you to leave your items. Thank you!

CHURCH HALL HIRE:

Please remember that the well-appointed Church Hall is available for hire at reasonable rates and would be ideal for children's parties and small groups/meetings. For more information, please contact Sue Hayter on 01449 613710. Thank you.

THE QUEEN'S PLATINUM JUBILEE

FLOWER FESTIVAL

Flower Display Theme :- 70 Glorious Years

HOLY TRINITY CHURCH STOWDLELAND

June
2022

3rd 4th 5th

10.30am - 5.00pm Each Day

***Light Refreshments,
In The Church Hall***

Further details from Ann Doubtfire 07747660813

CHAIRMAN'S COLUMN

Spring has definitely sprung and as I write we are enjoying some lovely weather and people are busy on the allotments and in their gardens. I am awaiting the return of the swallows that have nested in my car port for the last 5 years and usually they arrive 2nd week of April. For the other birds I hope you are all busy making the teapot nest boxes.

I must say a huge thank you to the volunteers and our District Councillors who gave up their time to help plant the hedging on the cemetery. We had enough whips to do the back and the side at the far end. Hopefully when this is grown it will provide cover and food for wildlife as there is a wide mix of native species. District Councillor Welham has funded Barn Owl and Tawny Owl boxes from his locality budget and one of each will be put in the cemetery.

Parish Councillors Bridges, Stevens and I have attended the first meeting of the Gateway 14 Stakeholder Group. This group is composed of representatives of Stowmarket Town Council, Stowupland and Creting St Peter Parish Councils and its purpose is to meet with representatives of Gateway 14 Ltd and the developers of the site. Gateway 14 Ltd is a wholly owned local authority trading company with Mid Suffolk District Council as the ultimate shareholder. To date the archaeological work on the site is almost complete and work is expected to start on the site road by the middle of April. Access to the site for plant and lorries during this period is via Mill Street, Stowmarket. Once the internal roadway is completed to the Tesco roundabout this access will be opened and all future lorry movements will be via this entrance. Traffic through the village to access the site remains a concern for your Parish Council but all contractors and suppliers will be instructed to use the A14/A140 route to avoid the A1120. Any deviation from this noticed by the Stakeholder Group should be reported direct to the site developers. We were assured it would be an open site with room for lorries to wait on site so there would be no queuing of lorries on the highway.

There will be individual planning applications as companies come on board to be located on site. Gateway 14 will update the stakeholders on potential business partners as soon as they are able to. The site is to be as environmentally friendly as possible with a lot of green space and landscaping. Buildings will have solar panels on the roof with the ability for larger buildings to supply power to smaller units if needed. The site when completed is expected to provide up to 4800 jobs.

Work continues planning the village picnic on the Thursday and the flower festival at Holy Trinity Church over the Jubilee weekend. Stowupland History Group have volunteered to mount a display in The Chapel on the Thursday afternoon based around 70 years of the Queens reign and the changes in the village and will be open from 2.30pm to 6pm.

There will be crafts and games on The Green to keep the children amused. The picnic will start at 4pm on Thursday 2nd June and run through to the lighting of the Beacon at 9.15pm. A Platinum Jubilee is an event we are unlikely to see repeated in our lifetime so let's really celebrate, put up the bunting and party together. What we do need for the afternoon is qualified first aiders so if you can help with this, please contact the Clerk.

Finally, don't forget the Annual Parish Meeting on 18th May in the Village Hall. This will be the first meeting for 2 years due to Covid and it would be good to see as many residents there as possible. It is your chance to hear from organisations in the village and ask questions of your Parish Council. Your Parish, District and County Councillors work hard on your behalf and look forward to meeting as many of you as possible. The meeting starts at 7.30pm but tea and coffee will be available from 7pm.

Sally Reeves

PARISH COUNCIL REPORT

APRIL 22



The meeting opened with 4 members of the public, 8 Parish Councillors and Councillors Eburne and Welham.

Council Report:

The full SCC and the District Council reports can be found elsewhere in Telstar. Cllr Welham also reported that he has arranged a meeting with the relevant officers of the District Council to discuss the local cycle and walking infrastructure as it relates to Stowupland. He also advised that SCC had failed to secure any Government money for the bus service improvement plan. Those County Councils that had secured money had put forward innovative plans involving electric buses in conjunction with their local bus providers whereas there was none of that from Suffolk.

Matters of Report:

The order has been placed for the upgrade of the street lighting to LED units. SCC have advised that no action is required in respect of the visibility issue when driving out of Devon Road near the Chinese Takeaway. The majority of the sandbags have been removed and the bus stop completed, however, the bus stop markings still have to be completed along with top surfacing of the route to school path across the Green and the removal of the final section of sandbags.

Public Forum:

One resident voiced her concerns about the proposed positioning of the den area as she had recently encountered two ten- or eleven-year-old boys creating a fire which she said was close to getting out of control in that area. Another resident was concerned about the quality of the map which accompanied the letters/Green Policy that was issued to those residents who live around The Green.

He stated that it was out of date compared to the one that is held by the Land Registry. He also enquired about whether the new trim trail footpath due to be constructed along The Green would be carried over the track leading to Green Farm.

A third resident advised that parents were using the track leading to Chapel Lane to drop their children off for school and she had also seen a truck parked on the track recently. Another resident reported that a strip of grass either side of the path between The Retreat Pond and Chapel Lane had not been mown by the grass contractors.

Thradstones Meadow:

The Parish Councillors confirmed the receipt of the plans for the transfer of Thradstones Meadow from Bloor Homes and that Bloor Homes should carry out work on the trees as per their arboriculture report prior to the transfer of the land. A bench will be installed on the meadow along with a pedestrian and 5 bar gate and 2 new dog bins.

Sub-Committee/Working Group Reports:

Bio-Diversity and Wildlife - It was advised that the recent family day had been very successful and that the bulbs planted last year were coming up, though they may not all bloom this year.

Environment – Following a report from the Green Working Group, it was decided to accept their proposals to contact the post contractors to correct the ones on Gipping Rd. In view of the concern relating to the den building site it was decided to postpone a decision until it can be discussed at next month's meeting. Quotes are to be sought for the removal of trees by the safer route to school and to get some advice about the unhealthy-looking tree by the Retreat pond. Some topsoil will be required to fill in some damage to the edge of The Green close to the fish shop. Other items identified will be monitored to see if any work may be required in the future.

Finance and Policy – It was agreed to accept the quotes for the work to be carried out on the ash tree on the Green at Maple Road. Cllrs Reeve and Welham will take a look at the fallen tree by Birch Close to see if it can be left for wildlife as a resident has offered to monitor it.

Planning – 2 applications have been received for extensions to current properties in Sycamore Road and Saxham Street and these were both supported. MSDC have granted planning applications at Columbyne Close and Mill Street.

Transport, Travel and Safety – SCC Highways have advised that they no longer permit permanent SID's as in their opinion, they are ignored. Cllr Voden was appalled by this letter and felt that the PC need to respond to it. The County Road Safety Officer advises that in the case of a permanent SID, it would need to be switched off for a period of 6 weeks every other 6 weeks and this would mean someone having to remove the battery each time to get it recharged.

The Police do have some number plate recognition devices available at Wymondham but have not implemented their use as yet. Cllr Voden and SCC Cllr Welham will make some further enquiries of what more lightweight devices are available.

Trim Trail – Following the report and results from the public consultation to which they received 55 responses which was a little disappointing as was the lack of help from the public. After much discussion, it was decided that the project should go ahead as envisaged and for the route to be agreed and a list of items for it and their positions identified which will be funded from the Parish CIL. The 2 items to be placed on the Bloor site will be funded by Bloor Homes. The equipment will require monthly inspections to advise of any problems with it and a map of the route will be drawn up.

Councillors' Reports:

Cllr Studd stated that a lot of money had been spent clearing the ditch at the allotments, but a lot of debris has fallen back into this ditch.

Cllr Bridges reported that the sequence seems to be faulty on the new crossing opposite the garage and that this may be why some people are not using it. She was also concerned about the faded 30mph signs on Thorney Green which SCC have advised that they will not replace.

Cllr Voden advised that he had completed the new paperwork for speedwatch and that Suffolk Police now have a facility to report any abuse directed towards speedwatch volunteers.

He also reported that the noticeboard by the butchers had suffered some water damage and that the new path installed by Bloor Homes currently leads nowhere as the bridge has not been installed yet.

This year's garage sale in aid of E.A.C.H will be held on 26th June.

Cllr Murton reported that the bridge by The Retreat was very worn and she was advised that a new larger bridge is going to replace it. She also advised that daffodils have been planted on The Green outside Fairfield Cottages causing problems for the grass contractor.

Chairman's Report:

The Chairman advised that the letters and copies of the Green Policy have been delivered to all properties that surround The Green. It will be necessary to write to the property owner who has changed the surface of The Green outside their property. It was agreed to accept the quote of £90 per cut to trim round the posts on The Green. It was agreed that there will be costs to the Council to put on events to celebrate the Queen's platinum jubilee. In addition to the picnic on the Green, the costs involved in the hire of a toilet, face painter and bouncy castle will need to be factored in. Bloor's have given £500 for the purchase of a gazebo as a point of contact for lost children etc. 2 qualified first aiders are needed and carers for lost children will be required to be DBS checked.

Final costs will be advised next month and it was agreed that the Community Events reserves be used to fund the planned Jubilee events.

Councillors have also agreed to volunteer to plant the remaining whips in the cemetery at 10.30 on 23rd April, all volunteers will be greatly appreciated and she thanked Cllr Welham and all those who have already given their time to planting the new hedge to the rear of the cemetery. She advised that she and Cllr Bridges had attended a meeting relating to the Gateway 14 project along with representatives from Creting St Peter and Stowmarket and that these meetings will be held regularly every 6 months. It was also agreed to write a letter to MSDC asking for an update on their proposals and funding for the junction of the B1115/A1120.

Correspondence:

Correspondence has been received from MSDC in relation to the Mendlesham draft neighbourhood plan modification, the community governance review, the change of the national minimum wage and the enforcement issues relating to a property in Gipping Road. Residents have contacted the PC regarding parking on The Green, the new posts, the hedging in the cemetery and the village green policy.

The meeting closed to the public at 9.50pm.

DISTRICT COUNCILLORS' REPORT

MAY 2022

Motion on Neighbourhood Plans

Our group proposed a motion at the March meeting of Council to urge further allocation of resources to actively promote and encourage the process of developing Neighbourhood Plans, including making contact with all core villages which have not yet produced a Plan. This motion was agreed.

Motion on Net Zero Carbon

Our group also proposed a motion to adopt the Net Zero Carbon Toolkit as technical guidance for developers and homeowners to help reduce the carbon footprint in new and existing buildings. Three district councils in Oxfordshire and Gloucestershire developed the toolkit in conjunction with the Local Government Association and is available as an open resource for all Councils in England. The Council will now promote the toolkit to applicants at all stages of the planning and building control process.

Remote and Hybrid Meetings

Council has written to Government to urge a change in the law to allow councils the flexibility to hold remote and hybrid meetings when they deem appropriate within rules and procedures to be agreed.

Local Cycling and Walking Improvement Plan (LCWIP)

On 4 April, Cabinet considered plans to improve the walking and cycling network across Mid Suffolk to encourage active travel and help reduce the effects of climate change. The plan sets out the council's approach to improving and developing the local cycling and walking network across the district over the next 10 years, to support residents in shifting towards more sustainable transport.

Examples of schemes included in the plan are:

- improvements to Junction 49 roundabout to link with an existing cycle path in Stowmarket
- pedestrian access to schools and a new crossing on Church Road in Stowupland

We have pointed out that the crossing on Church Road has already been completed. A site meeting is being arranged with County and District officers to update their schedule of proposals and press for completion of the safer route through the High School site and to discuss potential additions to their list.

Freeport East

Gateway 14, along with Felixstowe and Harwich, form Freeport East, a company limited by guarantee of which MSDC is a partner. There will be huge tax and other advantages for companies moving to Gateway 14. Our group is concerned about the clear financial advantages for companies moving into Gateway 14, especially as preference is being given to attracting multinational companies rather than encouraging local companies onto the development.

Hedge planting at the cemetery

We were pleased to be able to join with members of the Biodiversity Group and other volunteers to plant a new hedge along the rear boundary of the cemetery.

Councillor Keith Welham
keith.welham@midsuffolk.gov.uk
Telephone: 01449 673185

Councillor Rachel Eburne
rachel.eburne@midsuffolk.gov.uk
Telephone: 01449 673311

COUNTY COUNCILLORS' REPORT

MAY 2022

Full Council 24 March

Full Council presented a rare opportunity of solidarity between Councillors, as our Group and the Conservatives shared a single motion in support of Ukraine. Our Group recommended a motion deploring the actions of the Russian government, as well as a commitment to supporting and welcoming refugees as they become a part of our Suffolk communities. The Conservatives supported our idea and together we showed how politics can be put aside through difficult times.

Bus Back Better - Suffolk's Enhanced Bus Partnership

On 29 March Cabinet approved entering into an Enhanced Bus Partnership and delegated decision-making powers to the Enhanced Partnership Board with regards to the allocation of any funding received through the National Bus Strategy for the first Enhanced Partnership Scheme.

On 4 April Suffolk heard that their bid for funding had been rejected and no Government funding will be provided. This could result in the loss of all rural services and any other non-commercial services unless SCC provides subsidies. I will continue to press the case for better public transport provision in and around Stowmarket and surrounding villages.

Freeport East – Agreement to the Final Business Case

A Full Business Case for Freeport East has been forwarded to Government following the formation of a Company Limited by Guarantee as the governance model to run Freeport East; the County Council is a member of that company.

Gateway 14, along with the ports at Felixstowe and Harwich, form Freeport East. There will be huge tax and other advantages for companies moving to Gateway 14, including no requirement to pay business rates for the first five years.

Our group expressed concerns about the clear financial advantages to companies moving into the development, especially as preference is being given to attracting multinational companies rather than encouraging local businesses to expand and move to the site.

Keith Welham

County Councillor of Stowmarket North and Stowupland

Keith.Welham@suffolk.gov.uk 01449 673185 or 07831 705 714



PATIOS & DRIVEWAYS LTD

BLOCK PAVING SPECIALISTS

■ PATIOS	■ DRIVEWAYS
■ PATHS	■ GARDEN WALLS
■ TURFING	■ SHINGLE DRIVES

CALL US FOR A FREE ESTIMATE ON:
01449 404225 07771 728481

E: BRETTNOELHUBBARD@GMAIL.COM
WWW.NRH.BIZ

**You could advertise your
business here for only:**

£10 per month
(Quarter Page)

£20 per month
(Half Page)

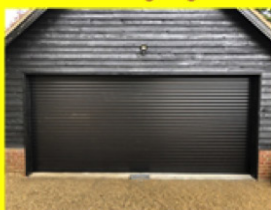
£40 per month
(Whole Page)

Please contact:
Sally Wray by email
adverts.telstar@hotmail.co.uk

RH SECURITY & ELECTRICAL ELECTRICAL CONTRACTORS

Covering all Of East Anglia
Domestic, Commercial & Industrial Installations

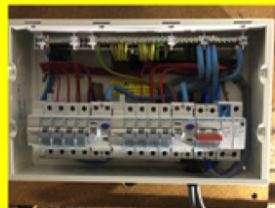
Electric roller garage doors



Automated gates



Replacement Consumer Units



TELEPHONE
07909524552



OUR SERVICES

- ☐ Electrical Inspection
Condition Reports (EICR)
- ☐ CCTV Installations
- ☐ Automated gates
- ☐ Rewires
- ☐ Electric heating (inc.
Underfloor Heating)
- ☐ Extra Sockets and Lights
- ☐ Garden Power & Lighting
- ☐ Kitchen Installations



WHY CHOOSE US

- ✓ Over 30 Years Experience
- ✓ Fully Qualified
- ✓ Insured
- ✓ All work Guaranteed
- ✓ Part P Registered Company
- ✓ NICEIC Approved Contractor

CONTACT Tel. 07909 524552

Email. richard@rhsecurityandelectrical.co.uk

THE TELSTAR TEAM

Editor - Kay Easter – kay.telstar@gmail.com - 01449 677261 – 16 Oak Road
Kay welcomes contributors to the magazine, either one-off articles or regular columns.

Business Advertising - Sally Wray - adverts.telstar@hotmail.co.uk - 01449 676612
Businesses with a Stowupland connection can advertise at very reasonable rates.

Diary Dates – Neil Langridge – neil@stowman.plus.com - 01449 616275
To let the village know the date and venue of your event contact Neil to be included in the diary dates.

Distribution Co-Ordinators – Keith and Cathy Welham – 01449 673185
Colin Vickridge and Keith Welham are our proofreaders and Jerry Voden chairs meetings of our team. The entire team are unpaid volunteers.

Telstar is distributed by a team of volunteers who deliver the magazine to over 1,100 homes in Stowupland. The magazine is produced every month, with the exception of December and January, which is a combined copy that gives our trusty team of volunteers a well-earned Christmas break!

Telstar is funded by grants from Stowupland Parish Council and Mid Suffolk District Council as well as income from business advertisers.

Telstar – for the community, by the community.

From the Telstar Committee

Please note that the opinions expressed in letters and articles are not necessarily those of the Telstar Committee. We cannot be held responsible for the accuracy of material submitted for publication. We reserve the right to include, edit or amend as we think appropriate. Telstar is produced in good faith but errors or omissions may occur during the process of production. If this is the case, please let us know so that errors may be corrected.

Advertising Disclaimer

All adverts are placed in good faith and the publishers cannot be held responsible for any work carried out. Advertisers details are not passed to any other publishers.

Deadline Date: 7th May 2022 for June 2022 Edition

Printed by Gipping Press Ltd. Tel: 01449 721599. Web: www.gippingpress.co.uk

Bowls Open Weekend

at

Stowupland Bowls Club

next to the Village Hall, Church Road, Stowupland



COME AND TRY BOWLS ALL WELCOME

Children under the age of 16 must be accompanied by an adult

The green at the above address will be open on

Saturday 30th April 10am until 4pm

and Sunday 1st May 10am until 1 pm

ALL equipment will be provided.

Wear whatever you want

BUT, please,

wear shoes with a flat sole

Club Members will be available to help